

# Installation Instructions for Electrified Gates

Each gate option has its strengths and weaknesses. Electrified gates are inexpensive and much easier to install than steel gates. But they're also much less durable.

Remember these key principles about electrified gates:

1. They are pain barriers. They are not physical barriers. They are not capable of standing up to physical crowding by livestock—not even sheep or goats.
2. Visibility and effectiveness are related. Animals can't avoid gates that they cannot see.



**Kit includes:** SafeHandle, 25 ft of IntelliTape SuperWide, insulated activator and an insulator.

## A. IntelliTape™ SW Gate

The most visible single-strand gate. But less “tidy” to use than a spring gate because the tape does not “shrink” in length when gate is opened. Adjustable from 4 ft to 25 ft long.

For steel T posts	#340200
For wood posts	#340201
For steel T posts, (without tape)	#340220
For wood posts, (without tape)	#340221



**Kit includes:** SafeHandle, 16 ft Spring Gate, an insulated activator and an insulator.

## B. Spring Gate

Popular, effective gate. Not visible enough for untrained horses. Insulated polycarbonate handle is very strong and impact-resistant. Fully retracts if expanded 16 ft. Galvanized.

For steel T posts	#340000
For wood posts	#340010



**Kit includes:** SafeHandle, 25 ft IntelliBraid, an insulated activator and an insulator.

## C. IntelliBraid Gate

Many prefer this to a standard rope gate (below). Works because IntelliBraid, unlike other braided ropes, uses both tinned copper and stainless steel.

For steel T posts	#340801
For wood posts	#340800



**Kit includes:** SafeHandle, 25 ft EnduraSoft, an insulated activator and an insulator.

## D. Rope Gate

We personally prefer this gate over spring and SW IntelliTape gates. Why? It's more durable and more tolerant of abuse and mild neglect. The insulator and activator are different for steel vs. wood posts, so specify.

For steel T posts	#340300
For wood posts	#340310



(800) 282-6631  
[www.premier1supplies.com](http://www.premier1supplies.com)  
 Washington, IA

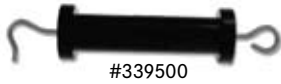
#111119  
 03/09

## E. SafeHandle™

### Insulated gate handle.

#### Features:

- 1. UV stabilized polycarbonate.** Less likely to break than polypropylene handles.
- 2. Internal compression springs** instead of expansion springs (prone to stretching).
- 3. All metal parts stainless steel.**
- 4. Larger hand grips for a safer hold.**



#339500

*Black is perhaps most durable.*



#339600

*White is most visible against grass.*



#339700

*Amber is most visible against snow, dust and dirt.*



## H. MaxiShock Insulated Cable and Double-Insulated Wire

For connecting activators to the live fence. It's very flexible and needs no connectors to make a lasting electrical joint.

MaxiShock Insulated Cable, 10'	#163900
MaxiShock Double-Ins. Wire, per ft	#164200
MaxiShock Double-Ins. Wire, 165'	#164201

## F. Wood Post Activator

Combination insulator and activator for wood posts. To energize, connect live wire from fence to a loop with 2 ft of insulated MaxiShock (not included). SafeHandles will hook into either loop.



#340130

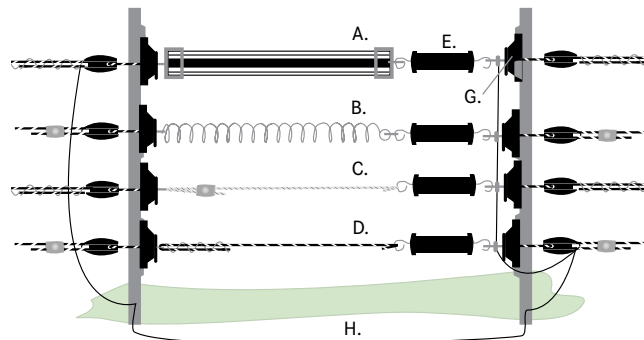
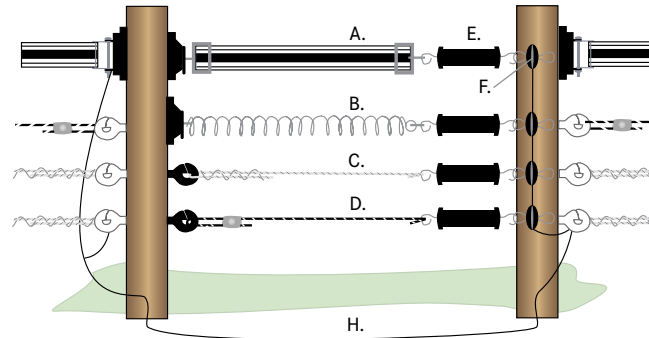


## G. Steel Post Activator

Insulator and activator for steel T posts. Feeds "power" from existing permanent fence to split-bolt joint clamp with 2 ft of insulated MaxiShock (not included).



#340120



## NetGate™ 3.0

Our preferred pasture gate for sheep or goats if animals are never pushed against the gate. (If they are, we use Premier's welded wire panels.)

#### Here's why...

- Keeps goats and sheep in and their predators out.
- Will contain guard dogs.
- Visible day and night against all backgrounds.
- Places no strain on end posts of permanent fence.
- Can be angled out from either gate post in minutes to guide the herd in or out of a field.
- Fits gate openings from 12 to 20 ft. To shorten, carefully roll up the excess net around an end post. Installs in minutes.
- Low initial cost.

Consists of 20 ft of net, 2 end posts (1 in. diameter PVC posts) and a smaller center post.

Just clip a PowerLink (sold separately below) to an existing "hot" wire to add or remove "power."

340501	35" x 20'
340601	42" x 20'
335500	PowerLink 3.0

