

Getting the best from... Premier's Pritchard Teats

Helpful hints:

- Be sure not to lose the tiny metal ball that rattles when you shake the teat. The teat will leak without this ball. This rarely happens and primarily only from washing the teats too aggressively.
- Do not use Clorox® to disinfect teats. The strong chemical reacts with the latex and can cause rapid disintegration of the teat. Be aware of imitation Pritchard teats currently on the market. They can be identified by their stiffer, molded rubber material. Pritchard teats are made with soft pliable latex. We have found in experimenting with the molded teats that they are difficult to use with weak lambs, goat kids or tiny lambs from triplets or quads.
- Do not leave teats sitting in the sunlight. Especially do not leave them sitting on a window ledge inside a building. This "greenhouse" situation has been known to heat the red latex until it melts into a gooey blob. As all areas of high heat are bad for this type of latex, it's best not to leave them close to an "active" wood stove or furnace.
- Do not clean the teats in boiling water. Use only warm water with a small amount of dishwashing detergent.

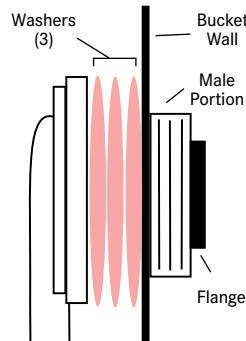
Cutting the Pritchard teat

Teats are supplied with no hole in the end and must be cut before use. Two different techniques can be used to cut the teat:

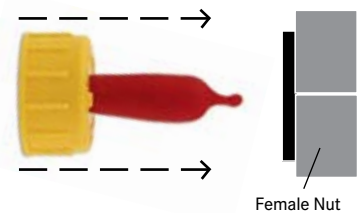
1. The most common technique is to use sharp scissors and snip the tip off cross-ways. The more you snip, the bigger the hole, so don't overdo it.
2. An alternate method was recently discovered by one of our researchers at Premier. Using the new technique, do not cut off the tip, but instead carefully slit the end into two halves with a razor knife. The two halves snap back together when not in use and self seal the end of the teat. Most importantly, this self-sealing method of cutting the teat allows you to place the teat in a partially inverted position, from which the lambs can suck at will.

Adapting it into the Bucket Teat Unit

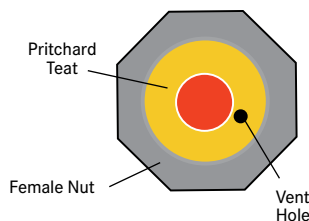
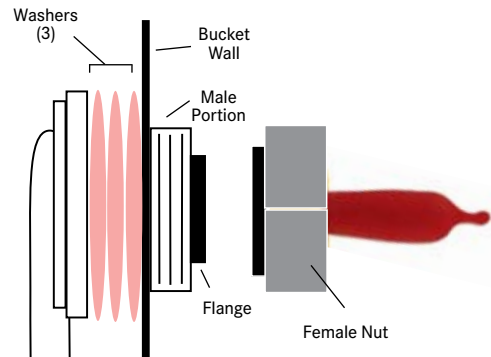
1. Add two extra washers to the male side of the bucket teat unit. There will be a total of three.



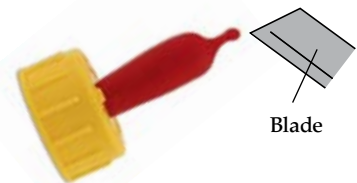
2. Insert the entire pritchard teat into the female side of the bucket teat unit.



3. Female nut will screw into male portion.



4. To prevent leakage, plug the vent hole on the pritchard teat. (i.e. with hot-melt glue, etc.).



5. Slit the end of the pritchard teat parallel to the long portion of the teat with a razor knife as demonstrated.



800-282-6631
www.premier1supplies.com
Washington, IA