

CAUTION:



DO NOT carry or move the unit via the solar panel. There are handles on the side of the unit for this.

Be careful when opening the lid up. Prop the lid up by using the solar panel, as shown.

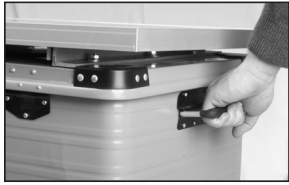
Installation directions inside.



Prop up solar panel.

Consider storing this box and styrofoam—if for some reason you need to ship back to Premier.

PRS 200X Instructions



DO NOT carry or move the unit via the solar panel. There are handles on the side of the unit for this.



www.premier1supplies.com
800-282-6631



Be careful when opening the lid up. Prop the lid up by using the solar panel, as shown.



1. Looking at the inside of the PRS unit as in the picture, remove the left foam battery cover and set aside.



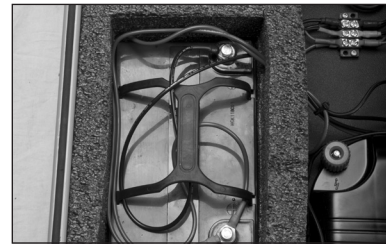
2. Lift the battery out of the foam pocket and set on the energizer case as shown. In the left pocket are 3 wires, 2 are red "+" and one is black "-".



3. Unscrew the bolt of the red "+" battery terminal. Make sure to keep the lock washer and regular washer on the bolt. Remove red tape from red "+" wires. Bolt "+" wires into the terminal. Tighten bolt until all components are firmly touching each other.

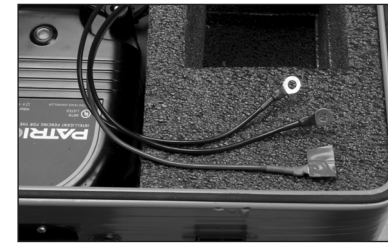


4. Unscrew the bolt from the "-" terminal. With washers still on the bolt, attach the black "-" wire to the "-" terminal.



5. Place battery back into the foam pocket. Do not set battery on the wires, the wires should be on top of the battery.

6. Replace foam lid.



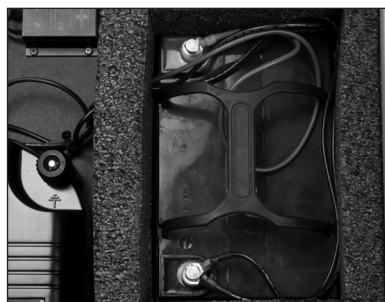
7. Lift the right battery out of the foam pocket and set on the energizer case as shown. In the right pocket are 3 wires, 1 is red "+" and 2 are black "-".



8. Unscrew the bolt from the red "+" terminal. Remove red tape from red "+" wires and bolt them into the terminal.



9. Unscrew the bolt from the "-" terminal and bolt in black "-" wires. Place battery back into the foam pocket. Do not set battery on the wires, the wires should be on top of the battery.



10. Replace foam lid.



11. Do not shut black and red fence leads in the case.



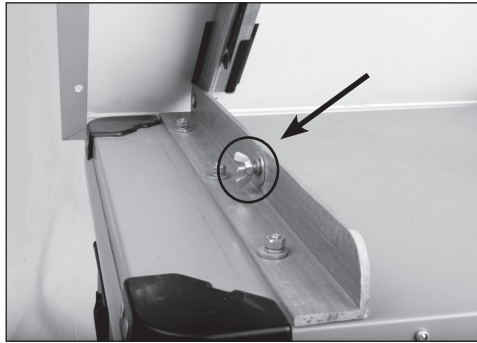
12. Close and secure energizer lid.

Your PRS unit has been manufactured with a charged battery. It is possible that during the storage and shipping process, the battery may have lost some of its charge.

It is recommended that the batteries be fully charged prior to use. If needed this can be done by leaving the unit in full sun for 3 days or attaching the battery(s) overnight to a 2 amp or less battery charger.

PRS on/off switch needs to remain in the OFF position during this initial battery charging phase. For normal fence operations the switch should remain ON.

To set the angle of the solar panel:



1. Lift up on the back end of the solar panel (opposite side of where the energizer latches). Lower the two supports from the solar panel.



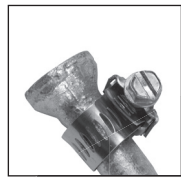
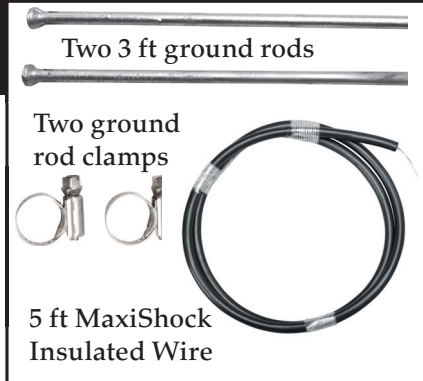
2. There are two brackets that are attached to the energizer case. Remove the wing nuts that are attached to these brackets (circled in photo). Attach both drop down supports to the brackets on the case with the wing nut and bolt. Your energizer is ready to be used.



Note:

If you are going to carry or transport your energizer, we recommend laying the panel flat on the energizer to prevent unnecessary stress on the supports.

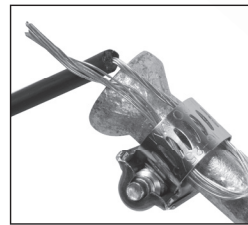
Connecting the PRS



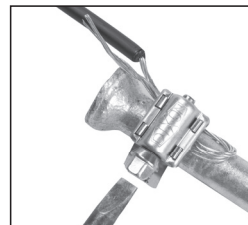
1. Place clamp on the neck of the ground rod. (Do this for both rods.)

2. Strip 6" of insulation off each end of the MaxiShock.

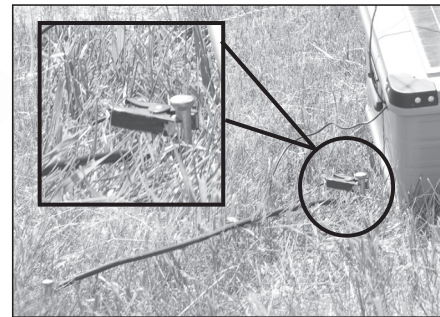
3. Make a loop with the bare wire (as shown).



4. Insert wire between the clamp and the ground rod.



5. Tighten the clamp so it firmly holds the wire to the rod. Repeat the process for the second rod.



6. Insert 1 ground rod next to the energizer. Extend 2nd rod as far as the cable will allow and insert into the ground.

7. Connect black clip to the first ground rod (as shown).



8. Attach red clip to the portion of the fence that is to be energized.

9. Turn on the energizer (on/off switch between the latches on the energizer).

