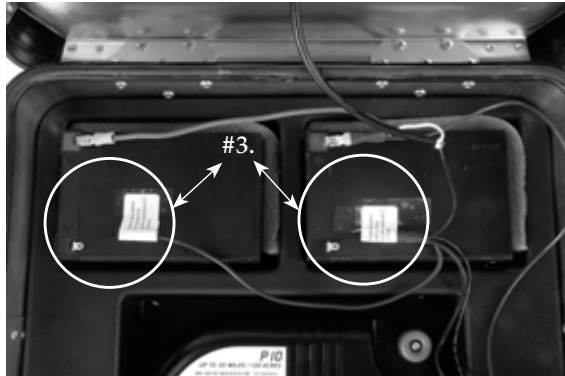


# Premier PRS 100 Solar Energizer Instructions

1. Make sure the switch is turned "off" before proceeding. The switch is located on the right side of the metal energizer case. (Red light should not be illuminated in the "off" position.)
2. Lay the red and black alligator clips/wires to the right side of the metal case. Do not detach clips or wires from the energizer.



3. Attach labeled wire(s) (*photo*) to the corresponding terminals. For each battery: attach negative wire  $\ominus$  to the negative terminal. Attach one spade per terminal.
4. Close the lid. Secure the latches that are on the metal energizer case.
5. Place case in the desired position (can be flat on the ground if needed).
6. Connect the black alligator clip (wire runs through case to the outside of the metal energizer case) to a 3' or longer galvanized ground rod.
7. Connect the red alligator clip (wire runs through case to the outside of the metal energizer case) to the fence.
8. Turn the energizer switch on. The switch is located on the right side of the metal energizer case. (Red light should be illuminated in the "on" position.)
9. Check the fence for proper voltage. Above 3000 volts is recommended for most situations.



[www.premier1supplies.com](http://www.premier1supplies.com)

800-282-6631