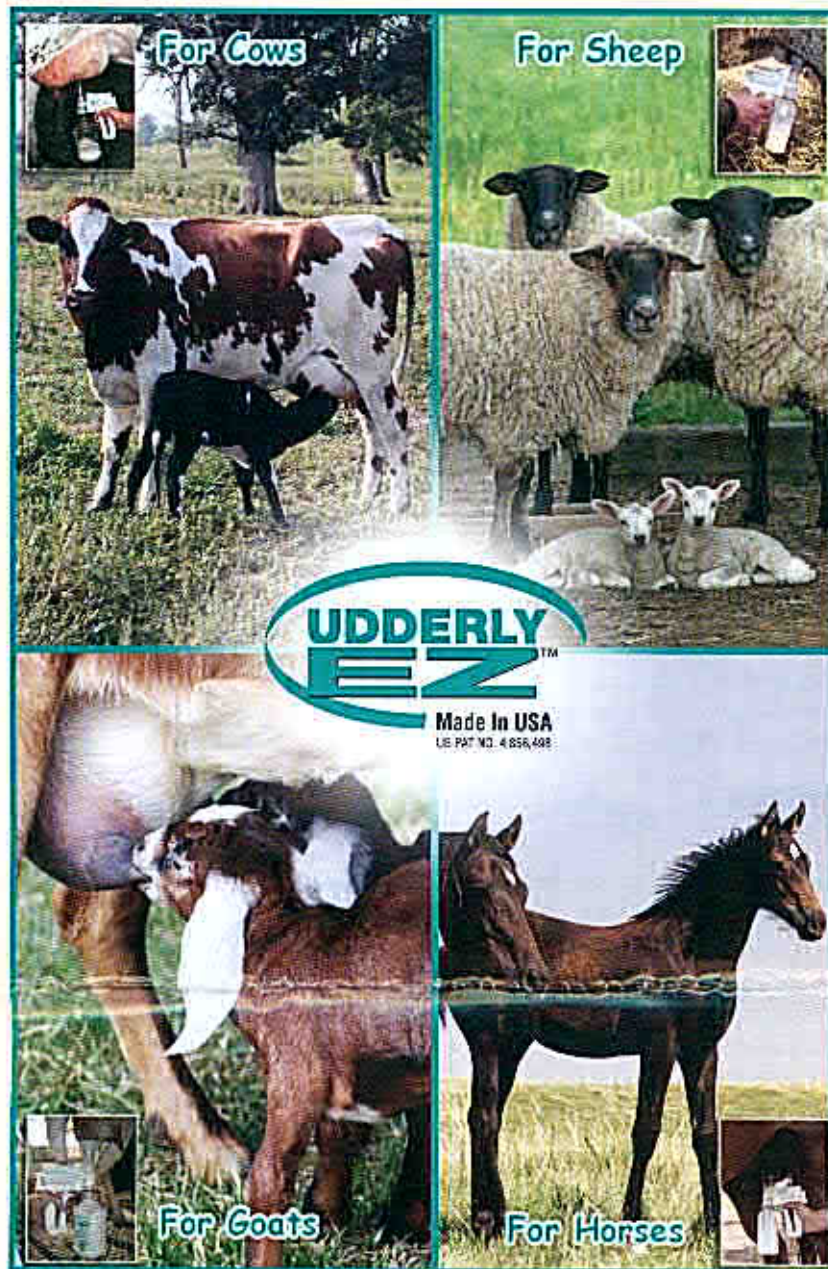


UDDERLY EZ™ Animal Milker



Cow-Goat-Sheep
Videos/Instructions



Equine Product
Videos/Instructions

Visit our website for online live videos

[youtube.com/udderlyez1](https://www.youtube.com/udderlyez1)

Toll Free: 1-800-287-4791

Phone: 859-368-9509

info@udderlyez.com

www.udderlyez.com

Cell: 507-213-2126



* Please read return policy on back before using equipment

Congratulations on your purchase of the UDDERLY EZ MILKER! It will give you superior performance and reliability in the extraction of milk and colostrum for:

- feeding a newborn
- collecting milk or colostrum from a newborn's mother or nurse animal for immediate use
- collecting milk or colostrum from a newborn's mother or nurse animal for storage in a milk/colostrum bank and regular milking of animals

All of the above can be accomplished with a minimum of effort and a great degree of safety. Please follow these easy steps in the assembly and operating procedures of the UDDERLY EZ MILKER and instructional video.

EZ ASSEMBLY

1. Watch enclosed DVD **before** you attempt to start milking.
2. Align the tapered end of the bottle connector with the insertion hole on the pump and connect the two; the pieces will lock together.
3. Screw the clear plastic bottle with the rubber O-ring onto the cylinder; this must be a snug fit to prevent any air leakage.

WARNING: DO NOT screw collection bottles onto collection tubes when tubes are attached to the pump connector. Tightening the bottle while the extractor is clipped to the pump causes undue pressure on the parts, and may break the clips. Screw collection bottles and collection tubes together **FIRST**, then connect them to the pump.

4. Grasp the pump and slide the bottle connector clips between the guide ridges on the collection cylinder; the pieces will lock together.
5. As a precaution, gently squeeze the cylinder and pump together to insure a solid seat of the two units.
6. Place the mouth of the extractor against the heel of your hand and pump to make sure pump is creating necessary vacuum. If vacuum is not created, repeat Steps 2 and 4, above.

The Udderly EZ milk and colostrum extraction cylinders come in one size #2. The Silicone Inflations are color coded and come in 3 sizes. They all fit into the hard plastic cylinder #2. Small to accommodate small or maiden mares, llamas, sheep, goat, cattle, etc. Medium for older medium size teats, and Large for the Big Teats on Cows, Camels, and Mares. Most all our kits are shipped with the Small and Medium size inflations, if an extra size is needed, please order at time of shipment. (it is a good idea to have all three on hand in case another size is needed.)

Please Note: Make sure the Silicone Liner (insert) is seated securely into the #2 Extractor Tube. Tilt it slightly over the top of the Plastic Tube and push down towards the other side and it will seat tightly over the top of the Plastic Tube.

CLEANING THE UDDERLY EZ MILKER

Clean the milker as soon as possible after each use. The pump portion of the milker readily snaps on and off, allowing the milker units' parts to be easily cleaned. After each use, the collection extraction cylinder and plastic collection bottle should be immersed in a warm water cleaning solution. You may add a disinfectant or sanitizer or a small amount of chlorinated cleaner or bleach (no more than 1 part bleach per 10 parts water). Clean and RINSE THOROUGHLY and allow to dry. You can clean all of the outside of the milker with Udderly EZ Wipes. **NOTE: Never boil any of the plastic collection bottles.**

Boiling will untemper them, and render them useless. Boiling is unnecessary with proper sanitization.

NEVER PUT THE BOTTLES IN A DISH WASHER.

Remember that the black O-ring must be returned to the lip of collection bottles after cleaning.

THE UDDERLY EZ MILKER WILL NOT WORK WITHOUT THE O-RING.

CLEANING PUMP IF COLOSTRUM GETS INSIDE

In the event that you get colostrum or milk inside the pump assembly, you should clean it as soon as possible. Immerse the entire pump with warm mild soap water or cleaning solution of (pH 7-8), add four to six tablespoons of baking soda and pump it thru the pump. Then repeat the process with warm clear water, pump it thru the pump, expel the water, shake it out and suction air thru the pump to help dry it internally, wipe off and let dry. Never let the pump sit overnight or for long periods of time if it has been contaminated with colostrum or milk. Colostrum is very thick and sticky and can ruin the pump assembly if it is allowed to set up.

THAWING FROZEN COLOSTRUM

Never use a microwave oven to thaw out frozen colostrum as it will destroy the antibodies. Place the colostrum bottle in a basin of warm water and allow to thaw slowly.



New updated parts for both Ez Milkers



Shown with Large Cow Milker Inflation



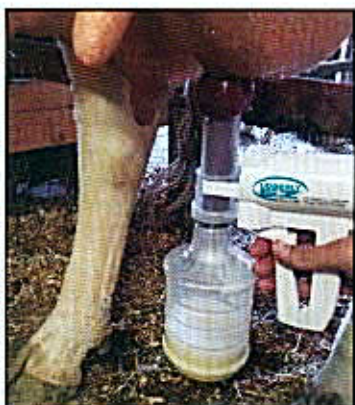
All three size Inflation fit into #2 Cylinder



Shown with Sheep & Goat Silicone Inflation & Baz Domic



THE MILK OR COLOSTRUM EXTRACTION PROCESS



1. Always clean the udder area, using the Udderly EZ Wipes provided in your kit, to remove any accumulated dirt and bacteria.
2. Gently remove the wax plug from the end of the teat so it does not drop into the bottle.
3. Manually strip each teat at least twice to get a good flow of milk started. Dampen each teat or use bag balm to help secure vacuum.
4. Place the cylinder directly over the teat and gently lift the pump unit against the udder.
5. Squeeze the handle at least 2-3 times, this will start the vacuum seal process, locking the unit onto the animal's udder. **You may want to hold bottle with free hand and tilt inward or towards the top of the pump until sealed.**
6. As soon as the milk flow starts, **stop pumping!** When the flow slows or stops, start pumping again. You may need to repeat this sequence 3-4 times. (see video)
7. To release the vacuum on the pump, push bottle backwards toward hand trigger to release vacuum lock. **Do not pull** pump off udder.
8. The first milking will generally collect between 8-12 ounces of colostrum, although this may vary with each animal species or breed.
9. If the mother does not let her milk down immediately, you may have to massage her udder gently to get the flow started. **Push the entire pump and bottle up into the bag (like a baby bunting it's mom while nursing) and let the weight settle back down and be careful not to break the vacuum seal.**
10. Do not overfill the collection bottle, only fill to the indicated line on the bottle. Never tilt pump backwards. This will allow the milk or colostrum to run into the air intake hole and damage the diaphragm in the pump.
11. Place the new Silicone Small Nipple directly into 8 oz bottle, or Large Nipple with the ring screwed onto the 18 oz bottle and feed directly to the newborn. All our bottles are Freezer safe, just apply cap and place in freezer. **DO NOT THAW OUT IN MICROWAVE!!** Our new bottle rings fit all size of our bottles.

UDDERLY EZ
Made in USA

The Udderly Ez Milker™ For Camels
The Udderly Ez Milker™

Manufactured by Wheeler Ent., Inc.
1308 South Clark Way
Lawrenceville, GA 30044
Phone: 800-907-4181 • 800-258-8828
Website: www.udderlyez.com
Email: info@udderlyez.com

MADE IN THE USA



THE UDDERLY EZ CAMEL MILKER
The Udderly Ez Camel Milker has been used on Camels in the UAE and at 4 of the Camel milking facilities in the U.S.A. We also have the Ultimate Ez Electric Milker available and there are three color coded Silicone Inflation's that fit all sizes of teats.

www.udderlyez.com for more information and full range of videos

UDDERLY EZ™ COLOSTRUM/MILK COLLECTION BOTTLES

Specially designed clear plastic see-through 8 oz., 18 oz. or 1 quart colostrum collection bottles with rubber O-ring on top to assure vacuum when attached to the Udderly EZ Milker. Cap has leak proof liner seal. Ideal for freezing colostrum and storing for future use or to transfer colostrum to a nursing bottle for immediate use.

Thank you for purchasing the UDDERLY EZ MILKER, the safest and most effective large domestic and exotic animal milk and colostrum collection device available. It can used on horses, ponies, sheep, goats, llamas, alpacas, zebras, camels and cows. Udderly EZ is also the most efficient hand operated milking product on the market today. This patented vacuum pump is manufactured only with highest quality engineered plastics and is assembled under the strict government quality control standards for medical devices. All bottles have a FDA Guarantee for Copolyester Clear Containers. All bottles manufactured expressly to the specifications for use on the Udderly EZ Milker. They are made of clear Copolyester and complies with the compositional and inherent viscosity requirements of existing U.S. FDA regulations at 21 CFR 177.1315, for all foods.

Every effort has been made to instruct, educate and explain our Udderly EZ™ Milker, including a free instructional DVD. If you have any questions about this product or if you are ever in doubt about its suitability for your purpose, **CONSULT YOUR VETERINARIAN.** The following is made in lieu of all warranties, expressed or implied; Seller's and manufacturer's only obligation shall be to replace such quantity of the product proved to be defective. Neither seller nor manufacturer shall be liable to the user or any other person under legal theory, including, but in no way limited to, negligence or strict liability, for any direct or consequential damages sustained or incurred by reason of the use of the product or otherwise. Before using, user shall determine the suitability of the product for the intended use, and user assumes all risk and liability whatsoever in connection therewith. The foregoing may not be altered except by officers of seller and manufacturer.

RETURN POLICY: Wheeler Enterprises Inc. dba EZ Animal Products will replace any Udderly EZ parts or pump shown to be defective in manufacture within 30 days with receipt of purchase when used in accordance with the enclosed instructions. Unfortunately, because of Biosecurity reasons and appropriate veterinary policy prevents us from permitting returns for any reason other than defective manufacture. Please order carefully.

UDDERLY EZ™ EQUINE, SHEEP, GOAT, COW, CAMEL & EXOTIC MILKER

(Products manufactured exclusively by Wheeler Enterprises, Inc.)



Checks and Money Orders in U.S. funds only.
Credit Cards Accepted:

