

swiss made

de	Schuranlage mit 3 Geschwindigkeiten	Original-Betriebsanleitung
en	3 Speed Shearing Plant	Translation of the original instructions
fr	Tondeuse à 3 vitesses	Traduction de la notice originale
it	Motore di tosatura a 3 velocità	Traduzione delle istruzioni originali
es	Esquiladora de 3 velocidades	Traducción del manual original
nl	Scheeraandrijving met 3 snelheden	Vertaling van de oorspronkelijke handleiding
da	Klippeanlæg med 3 hastigheder	Oversættelse af den originale brugsanvisning
sv	Stationär klippmaskin för får, 3 hastigheter	Översättning av bruksanvisning i original
nb	Trehastighets klippemaskin for sau	Oversettelse av den originale brukerveiledningen
fi	Kolminopeuksinen leikkuulaite	Alkuperäisten ohjeiden käännös
pt	Sistema de tosquia com 3 velocidades	Tradução do manual original
gr	Κουρευτική μηχανή 3 ταχυτήτων	Μετάφραση πρωτοτύπου οδηγιών χρήσης



Table of contents

1	Safety regulations	2
1.1	Introduction.....	2
1.2	Symbols and warning notes	2
1.3	Stipulated usage.....	3
1.4	Basic safety principles	3
1.4.1	Power supply connections	3
1.4.2	Safety precautions.....	3
1.4.3	Noise emission / personal protective equipment	4
1.4.4	Residual dangers.....	4
1.4.5	Replacement power cable.....	5
1.4.6	Supervision of children.....	5
1.5	Operator requirements	5
2	Stipulated usage	6
2.1	Component list.....	6
2.1.1	Designation of individual parts	6
2.2	Purpose of use	7
2.3	Technical data	7
2.4	Equipment.....	7
3	Initial start-up	8
3.1	Important notes	8
3.2	Rotary speeds	8
3.3	Changing the speeds.....	8
3.4	Assembling the shearing plant.....	9
3.4.1	Assembly height of the wall mounting.....	9
3.4.2	Assembling the rigid drive downtube or flexible drive.....	9
3.5	Switching the shearing plant on / off	9
4	Maintenance.....	10
4.1	Cleaning.....	10
4.2	Service.....	10
4.3	Lubrication	10
4.3.1	Portable shearing plant	10
4.3.2	Flexible drive	10
4.3.3	Rigid drive downtube	11
4.3.4	Shearing handpiece	11
4.4	Storing the machine	11
5	Troubleshooting and repairs.....	12
5.1	Introduction.....	12
5.2	Troubleshooting.....	12
6	Environmental protection and waste disposal.....	13
6.1	Introduction.....	13
6.2	Material groups.....	13
7	Contact address	13



NOTE!

Read these instructions carefully before starting operation.

1 Safety regulations

1.1 Introduction

- This chapter describes the safety regulations that are to be taken into consideration as a matter of course when using the shearing plant.
- All persons who carry out work on and with the shearing plant must read the operating instructions.
- The operating instructions are to be kept in a secure place that is accessible at all times.
- Authorised service agents may only carry out service and repair work.

1.2 Symbols and warning notes

Various symbols are used in the operating instructions. These symbols indicate possible hazards or bring to the user's attention such technical information that, if not complied with, may lead to personal injury and material damage or to uneconomic operation.

Hazard symbols



WARNING!

Denotes a possibly hazardous situation. Serious injury and even death can result if such situations are not avoided.



CAUTION!

Denotes a possibly hazardous situation. Light or slight injury can result if such situations are not avoided.

Information symbols



NOTE!

A note which, if not complied with, can lead to operational stoppages or damage.

1.3 Stipulated usage

The shearing plant's intended purpose of use is described in Chapter 2.2, "Purpose of use". Use for any other purposes, particularly on people and dangerous types of animals, especially predators, is expressly forbidden.

The shearing plant must only be used in dry areas.

The details contained in Chapter 2.3, "Technical data", are to be considered as legally binding limit values and characteristic data. The safety check refers only to the portable shearing plant and not to the mechanical shaft and the shearing handpiece.

1.4 Basic safety principles

1.4.1 Power supply connections



WARNING!

- ▶ Never plug the equipment into damaged sockets. Observe the relevant regulations applicable in your country.
- ▶ Maintenance and cleaning work must only be carried out when the equipment is not plugged in.
- ▶ Sockets must be equipped with a circuit breaker (FI).
- ▶ If the SUPPLY CORD is damaged, it must be replaced by the manufacturer, its service agent or similarly qualified persons in order to avoid a hazard.

1.4.2 Safety precautions



WARNING!

- ▶ Avoid touching machinery that has come into contact with water or other liquids.
- ▶ Never shear wet animals.
- ▶ Children are forbidden from operating the equipment.
- ▶ Lay out the power cable cleanly.
- ▶ Check the power cable occasionally for damage.
- ▶ Keep the power cable well away from machinery & equipment operating in close proximity.
- ▶ Switch off the plant before pulling out the plug.
- ▶ After use remove the plug from its socket. The plant should only be cleaned or the cutter replaced when the plug is removed from the power socket.

- ▶ Avoid kinks or coils in the cable. Never wind the power cable around the plant during periods of storage. This can result in breaks and damage to the insulation.
- ▶ Ensure that animals do not stand on or walk over the cable, and that they do not get caught up in the cable.
- ▶ Keep children away from shearing areas.
- ▶ Never use a damaged plant. Have the machine checked for faults and repaired immediately by an authorised service agent.
- ▶ The air intake for the side and lower ventilation holes (Diag. 6, pos. a + b) must be guaranteed. Never insert any object into the shearing plant's ventilation holes.
- ▶ Never shear in the vicinity of explosive objects or gases.
- ▶ Never shear with blunt or broken shearing combs and cutters.
- ▶ Avoid any contact with the moving shearing cutters.
- ▶ Store the plant in a clean, dry place to which children and animals have no access.
- ▶ This appliance is not intended for use by persons (including children) with reduced physical, sensory or mental capabilities, or lack of experience and knowledge, unless they have been given supervision or instruction concerning use of the appliance by a person responsible for their safety.
- ▶ Children should be supervised to ensure that they do not play with the equipment.

1.4.3 Noise emission / personal protective equipment



Noise emission during operation is less than 70 dB (A), as the noise of the shearing hand-piece is also present during shearing. We recommend that ear protection, safety glasses and gloves are always worn when operating the plant.



Personal protective equipment to be provided by the operator.

1.4.4 Residual dangers

Should dangers and hazards occur during operation which are not directly related to the shearing of animals, we request that you inform us of this. This also applies in the event of a technical failure that causes a hazard.

1.4.5 Replacement power cable



NOTE!

If the power cable of this equipment is damaged, it must be replaced by the manufacturer or its after-sales service or a similarly qualified person to avoid dangers.

1.4.6 Supervision of children



WARNING!

Children should be supervised to ensure that they do not play with the equipment.

1.5 Operator requirements



NOTE!

The safe use of the machine places few demands on operating personnel. These must, however, be observed and maintained as a matter of course.

- The operator has experience in dealing with the animals being shorn.
- The operator has read and understood the operating instructions, or has been indoctrinated into the operation of the machine by a skilled person, and the risks and dangers have been pointed out to him.

2 Stipulated usage

2.1 Component list

2.1.1 Designation of individual parts

Pos. No.	Description	Quantity	Pos. No.	Description	Quantity
1	Handle	1	29	Spring key	1
2	Rating plate	1	31	LS-screw	8
3	Cover EVO	1	32	Switch support	1
4	Sponge rubber	1	33	Washer	1
5	LS-screw	4	34	Lever for switch	1
6	LS-screw	3	35	Spring for switch	1
7	Reinforcement plate	1	37	Retaining ring for shaft	1
8	LS-screw Phillips	4	38	Micro switch	1
11	Control unit ONE/ EVO	1	39	Socket head cap screw	2
12	Capacitor	1	40	Hexagonal nut self-securing	2
13	Capacitor	1	41	Ring spanner	1
14	Countersunk screw	1	42	Cord	1
15	Washer for counter-sunk screw	1	43	Hexagonal nut	1
16	Pulley, aluminium	1	44	Anti-kink sleeve	1
17	Snap-on belt	1	45	Cable with plug	1
18	Hexagonal nut	1	46	PT-screw	8
19	Washer	1	47	Motor housing EVO	1
20	Pulley, plastic	1	48	Base EVO	1
21	Drive housing EVO	1	52	Catch spring ONE/ EVO	1
22	Speed control sensor EVO	1	53	PH-screw	1
23	LS-screw	4	54	Seat clamp bolt with quick release 1 Converter Schuko/GB plug 5A	1
24	Motor EVO	1			
25	Gear shaft	1			
26	Radial ball bearing	2	55	Centering washer EVO	1
27	Spacer sleeve	1	56	Cover, control unit EVO	1
28	Retaining ring for bores	1			

2.2 Purpose of use

The portable shearing plant is specially designed to provide the drive for mechanical shearing handpieces. The complete shearing unit is expressly designed for the shearing of sheep, goats, llamas, alpacas and other members of the Camelidae species.

2.3 Technical data

Product name:	EVO
Mains voltage:	see rating plate
Motor output:	see rating plate
Rotary speed:	see rating plate / support plate
Required fuse protection:	see rating plate
Dimensions in mm (W/H/L):	225 x 300 x 290
Weight not including cable:	9.0 kg
Max. ambient temperature:	0 ° - 40 °C
Max. humidity:	10% - 90% (relative)
Noise emission (LpAm):	< 70 dB(A) (DIN-45635-1/04.84 + BG-PAS 26)

We reserve the right to make technical changes and improvements without notice.

2.4 Equipment

- Portable shearing plant
- Operating instructions
- Screwdriver
- Drip feed lubricator 100 ml
- Universal grease

Options

- Wall mounting
- Rigid drive downtube, worm
- Rigid drive downtube, pin
- Flexible drive, worm
- Flexible drive, pin
- Ferrule short
- Ferrule long
- Shearing handpiece, Icon, worm
- Shearing handpiece, Icon, pin
- Combs and cutters for the shearing handpiece
- Cord leads (Diag. 5)

3 Initial start-up

3.1 Important notes



WARNING!

- The voltage specified on the maker's plate and that of the local power supply must match. The plant may only be connected to an AC power supply.
- It is a compulsory that the operator has read the safety regulations.
- In the event that the plant is operated from a generator, the mains supply voltage must not exceed that specified on the maker's rating plate.

3.2 Rotary speeds

The three-speed portable shearing plant is specially designed for professional use.

The lowest speed is ideal for inexperienced shearers and for shearing under difficult conditions.

The medium speed setting is suitable for shearers with average shearing skills and for running in new shearing handpieces.

The high speed setting is for experienced, professional shearers who demand high shearing performance.

3.3 Changing the speeds



CAUTION!

An authorised service point in compliance with the following instructions may only carry out changing the speed!

- ▶ Pull out the plug from the socket.
- ▶ Remove the cover by loosening the nine screws (Diag. 2, pos. a). A plate bearing the speed specification is fitted beneath the cover. See also Chapter 4.2, "Service". The self-tensioning belt tensions the belt automatically.
- ▶ Push the belt by means of a slight movement so that the drive axis turns into the new desired position (Diag. 2, pos. c). To ensure that the belt is not damaged, do not use any auxiliary aids when changing speeds. Make sure that the belt is located in the grooves at the same height on both axis.
- ▶ Re-secure the cover using the nine screws (Diag. 2, pos. a).

3.4 Assembling the shearing plant

Pay attention to sufficient fastening of the shearing plant.

3.4.1 Assembly height of the wall mounting

Fix the wall mounting in such a way that a gap of approximately 10 to 25 mm remains between the end of the rigid drive downtube (or flexible drive) and the working area (Diag. 4, pos. c). In doing so take into consideration the type of application cited below.

If the plant is to be operated with the rigid drive downtube or flexible drive, the shearing plant is assembled in accordance with Diag. 4, pos. b. If the plant is to be operated with a flexible drive then it can also be suspended on a rope (Diag. 3).

3.4.2 Assembling the rigid drive downtube or flexible drive

- ▶ Release the quick release (pos. 54, Diag. 6).
- ▶ Push the coupling tube of the flexible or the solid drive downtube into the downtube bush of the shearing plant.
- ▶ Start and stop the motor while at the same time push the coupling tube upwards to the mark.
- ▶ Ensure the coupling tube is in the correct position with the mark and secure the flexible or solid drive by means of the quick release mechanism.



CAUTION!

Check that the flexible or solid drive is securely fixed by the quick release mechanism and located correctly before use.

3.5 Switching the shearing plant on / off



CAUTION!

Make sure that the ventilation holes are always clear (Diag. 6, pos. a + b). The shearing plant must never be switched on when it is lying on flat ground as the cooling air flow would be interrupted and the motor could burn out (Diag. 6, pos. b).



NOTE!

Connecting the shearing plant to the power supply, the motor is not yet engaged. The shearing plant is switched on and off respectively via the cord / lever (Diag. 6, pos. c). The drive is switched on by means of one downward pull, and is switched off again by repeating this operation.

Should the power supply be interrupted whilst the drive is running, for safety reasons the motor switches off automatically, which means that the unit must be switched on again via the cord / lever when the power supply is re-established.

4 Maintenance

4.1 Cleaning

Before commencing any maintenance work disconnect the electrical power supply by pulling out the plug!

Remove any oil and dirt from the shearing plant by means of a dry cloth. Do not use liquids!

4.2 Service



WARNING!

For safety reasons the portable shearing plant should be subjected to an annual inspection. It is important that the self-tensioning belt is checked periodically, since the functionality of the patented safety cutout device is dependent on this.

4.3 Lubrication

Lubricate the machine in accordance with the following specifications, since a lack of lubrication is the most common source of faults for unsatisfactory shearing results.

4.3.1 Portable shearing plant

Requires no lubrication.

4.3.2 Flexible drive

prior to each period of operation

Oil the flexible drive prior to use, and at least each time the cutters are replaced (Diag. 7, pos. a).

after 100 hours of operation

The flexible drive is fitted with sealed and permanently lubricated ball bearings. The rotating shaft bore must, however, be greased at regular intervals (after approximately 100 hours of operation or every 2 years). To perform this task dismantle the flexible drive in order to remove old grease residue from the shaft bore. Then re-lubricate the shaft bore along its whole length with fresh, high-quality mineral grease.

4.3.3 Rigid drive downtube

The rigid drive downtube is fitted with sealed and permanently lubricated ball bearings. The rotating cogs of the universal joint must, however, be lubricated at regular intervals during use (approximately every 2 operating hours). Lubricate the shaft at the lubrication points provided in accordance with Diag. 7, pos. b. Only high quality mineral oil is to be used for this purpose (engine or gearbox oil).

4.3.4 Shearing handpiece

See operating instructions for shearing handpiece.

4.4 Storing the machine



CAUTION!

Get into the habit of always giving the shearing plant a good clean after use, store the unit in a dry and clean location out of the reach of children.

5 Troubleshooting and repairs

This product has been developed and assembled using the best individual components available. It is designed to give longevity and high performance. If spare parts are used during the life of this product, please ensure that they are genuine Heiniger parts. Failure to use genuine Heiniger spares may reduce the performance of this precision engineered product and will void any warranty claim.

5.1 Introduction



WARNING!

The following troubleshooting guide will aid in determining problems and offer a solution. An authorised service point may only carry out solutions that appears against a dark background.

An authorised service agent is to be contacted in the event of malfunctions that are not contained in this manual.

5.2 Troubleshooting

Malfunction	Cause	Rectification
Motor does not run.	No power.	Power supply and/or fuse faulty.
	Cable faulty.	Have the cable replaced.
	Switch faulty.	Have the switch replaced.
	Motor faulty.	Have the motor replaced.
	Control unit faulty.	Have control unit replaced.
	Capacitors faulty.	Have the capacitors replaced.
Motor always switching off.	Cutter blocked.	Remove blockage.
	Mechanical damage in the shearing handpiece, in the rigid drive downtube or flexible drive.	For the purposes of fault finding first of all uncouple the shearing handpiece and restart the plant. If the fault persists, uncouple the rigid drive downtube or flexible drive from the shearing plant. Rectify any damage.
		If the fault still persists, then have the shearing plant repaired.
	Bearing in the shearing plant faulty.	Have the bearing replaced.
Motor system does not switch off by lock up.	The belt is slipping.	Have the belt replaced.

Malfunction	Cause	Rectification
Shearing unit is noisy or vibrates.	The belt is slipping.	Have the belt replaced.
	Bearing faulty.	Have the bearing replaced.
Motor gets hot.	Bearing faulty.	Have the motor replaced.
	Ventilation screen dirty.	Clean ventilation screen.
	Malfunctions in the rigid drive downtube / flexible drive and / or shearing handpiece.	Have fault rectified.
Shearing plant cannot be switched off.	Switch faulty.	Have the switch replaced.

6 Environmental protection and waste disposal

6.1 Introduction

The operator bears the responsibility for disposing of the machine in the proper manner. Observe the relevant regulations applicable in your country.

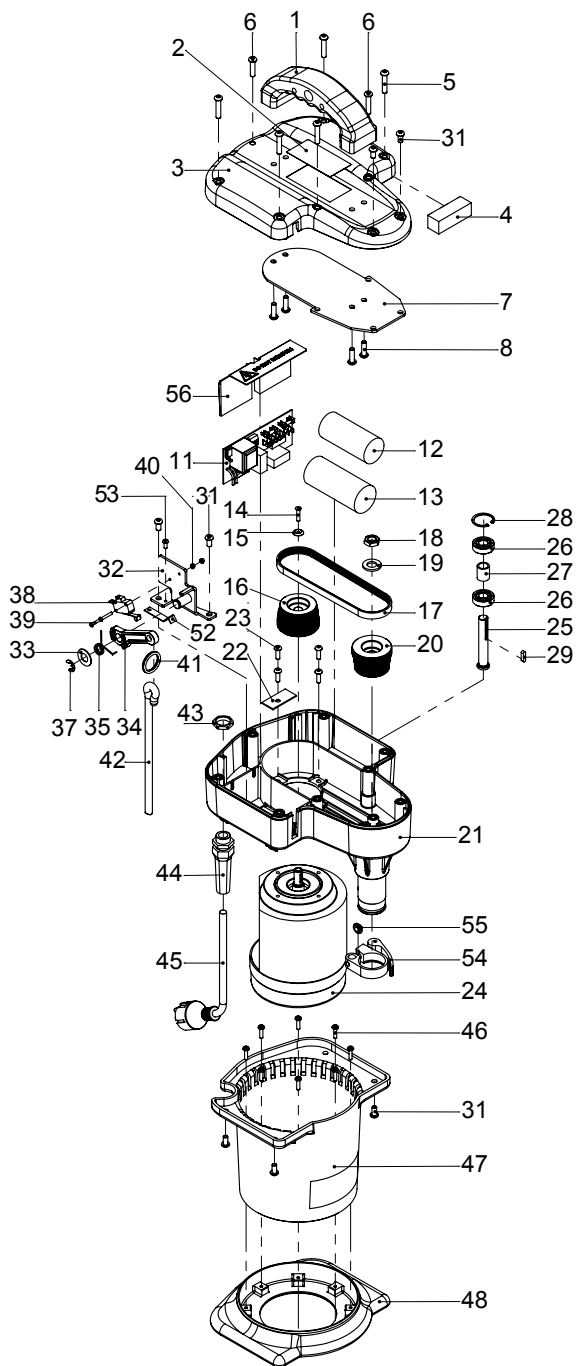
6.2 Material groups

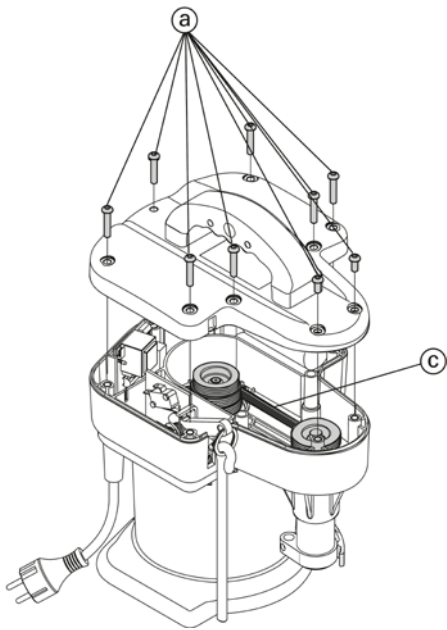
Please hand this in to a service point or your local specialist electrical workshop when the machine is to be dismantled.

Material	contained in pos. X taken from Diag. 1
Rubber	45
Polyamide PA	1/3/21/44/47/56
Polypropylene PP	42
POM	20/34
Polychloroprene/Polyester	17
Santoprene TPE	48
Iron/steel	5/6/7/8/14/15/18/19/23/24/25/26/27/28/29/31/32/33/ 35/37/39/40/41/46/52/53/54/55
Copper	45
Brass	38/43
Aluminium	16
other substances	2/4
Electronics	11/12/13/22/38

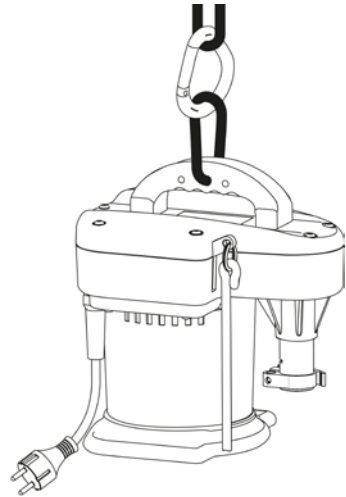
7 Contact address

The sales point or company specified on your guarantee certificate are authorised service points, or, alternatively, refer to the nearest service point in your area.

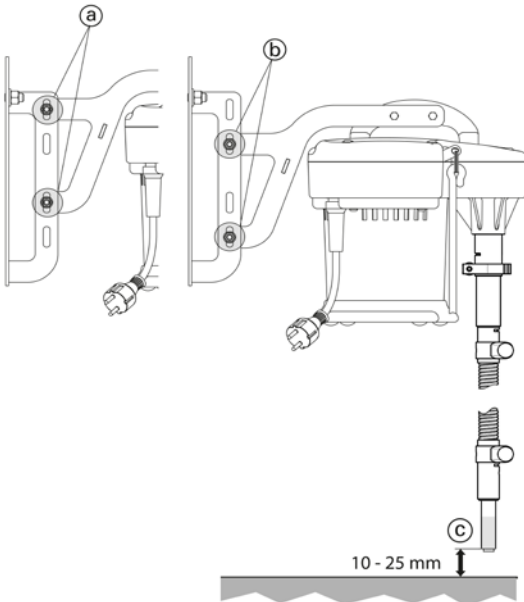




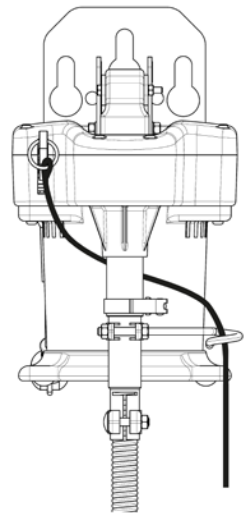
2



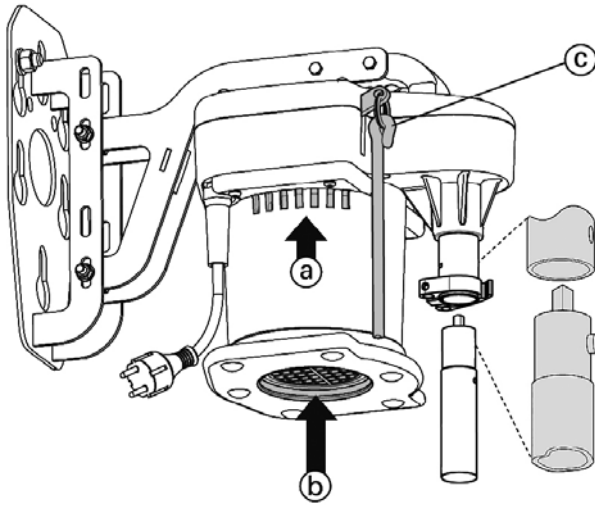
3



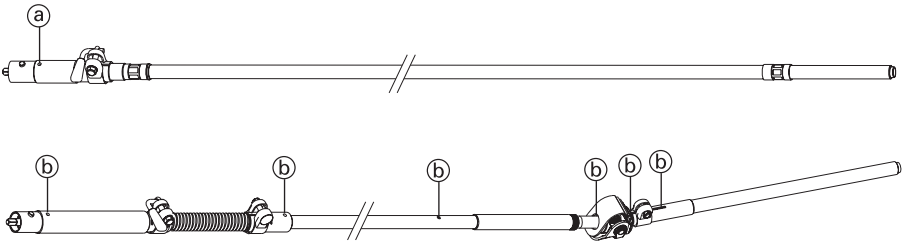
4



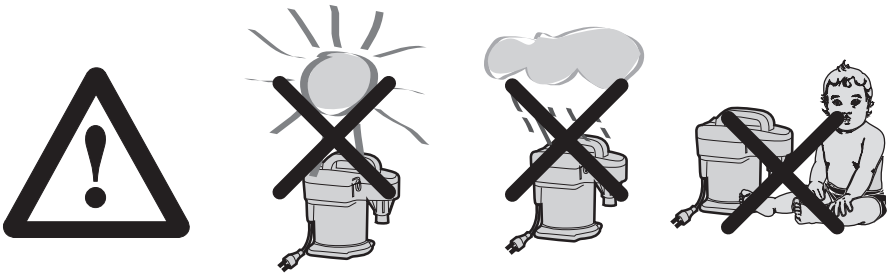
5



6



7



8

garantia	Item	Artico	Tuote	
	Artículo	Artikel	Προϊόν	
	Article	Artikel		
	Artikel	Artikel		
Articolo	Artikkel			
garantie	Serial no.	No. di serie	Serie nummer	
	No. de serie	No. de série	Sarjanro	
	No. de série	Serie nr.	Αρ. σειράς	
	Seriennummer	Serie Nr.		
	Serienr.			
garantie	Date of purchase	Data di vendita	Köpdatum	
	Fecha de compra	Data de compra	Kjøpsdato	
	Date d'achat	Datum van	Ostopäivä	
	Kaufdatum	aankoop	Ημερομηνία αγοράς	
	Købsdato			
warranty	Stamp and signature	Stämpel och		
	Sello y firma	namnteckning		
	Cachet et signature	stempel og		
	Stempel und	underskrift fra forretningen		
	Unterschrift			
	Timbro e firma	Myyjän leima ja allekirjoitus		
	Carimbo e assinatura	kirjoitus		
	Stempel en handtekening	Σφραγίδα και υπογραφή		
Stempel og underskrift				

In case of claim, please return your machine with the instruction manual and the warranty card directly to your local distributor. Please do not cut off the warranty card from the instruction manual.

© 2021 Heiniger AG. All rights reserved.

This instruction manual may not be duplicated or distributed, neither completely nor in extracts, or by electronic or mechanical means (including photocopying), transmitted or used for the purpose of competition without authorisation from Heiniger AG.

Subject to change without notice.

Contact:

Heiniger AG
 Industrieweg 8
 CH - 3360 Herzogenbuchsee
 Switzerland

Tel. +41 (0)62 956 92 00
 marketing(at)heiniger.com

Original-Betriebsanleitung
 Translation of the original instructions
 Traduction de la notice originale
 Traduzione delle istruzioni originali
 Traducción del manual original
 Vertaling van de originele gebruikshandleiding
 Oversættelse af den originale brugsanvisning
 Översättning av bruksanvisning i original
 Oversettelse av den originale brukerveiledningen
 Alkuperäisten ohjeiden käännös
 Tradução do manual original
 Μετάφραση πρωτοτύπου οδηγιών χρήσης

