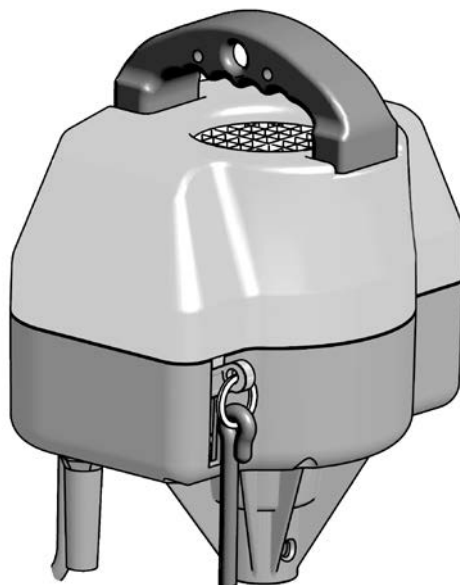


de	Eintourige Schuranlage	Original-Betriebsanleitung
en	Single Speed Shearing Plant	Translation of the original instructions
fr	Tondeuse à 1 vitesse	Traduction de la notice originale
it	Gruppo di tosatura a una velocità	Traduzione delle istruzioni originali
es	Esquiladora de una velocidad	Traducción del manual original
nl	Eentoeurige scheeraandrijving	Vertaling van de oorspronkelijke handleiding
da	Klippeanlæg med 1 hastighed	Oversættelse af den originale brugsanvisning
sv	Stationär klippmaskin för får, 1 hastighet	Översättning av bruksanvisning i original
nb	Enhastighets klippemaskin for sau	Oversettelse av den originale brukerveiledningen
fi	Yksinopeuksinen leikkuulaite	Alkuperäisten ohjeiden käännös
pt	Acionamento de tosquia de velocidade constante	Tradução do manual original
gr	Κουρευτική μηχανή μίας ταχύτητας	Μετάφραση πρωτοτύπου οδηγιών χρήσης



# Table of contents

1	Safety regulations .....	3
1.1	Introduction.....	3
1.2	Symbols and warning notes .....	3
1.3	Stipulated usage.....	4
1.4	Basic safety principles .....	4
1.4.1	Power supply connections .....	4
1.4.2	Safety precautions.....	4
1.4.3	Noise emission / personal protective equipment .....	5
1.4.4	Residual dangers.....	5
1.4.5	Replacement power cable.....	6
1.4.6	Supervision of children.....	6
1.5	Operator requirements .....	6
2	Stipulated usage .....	6
2.1	Component list.....	6
2.1.1	Designation of individual parts .....	6
2.2	Purpose of use .....	7
2.3	Technical data .....	7
2.4	Equipment.....	8
3	Initial start-up .....	8
3.1	Important notes .....	8
3.2	Assembling the shearing plant.....	8
3.2.1	Securing / suspending the shearing plant.....	8
3.2.2	Assembling the flexible drive.....	9
3.3	Switching the shearing plant on / off .....	9
4	Maintenance.....	9
4.1	Cleaning.....	9
4.2	Service.....	9
4.3	Lubrication.....	10
4.3.1	Portable shearing plant .....	10
4.3.2	Flexible drive .....	10
4.3.3	Shearing handpiece .....	10
4.4	Storing the machine .....	10
5	Troubleshooting and repairs.....	11
5.1	Introduction.....	11
5.2	Troubleshooting .....	11
6	Environmental protection and waste disposal.....	12
6.1	Introduction.....	12
6.2	Material groups.....	13
7	Contact address .....	13



## **NOTE!**

Read these instructions carefully before starting operation.

# **1 Safety regulations**

## **1.1 Introduction**

- This chapter describes the safety regulations that are to be taken into consideration as a matter of course when using the shearing plant.
- All persons who carry out work on and with the shearing plant must read the operating instructions.
- The operating instructions are to be kept in a secure place that is accessible at all times.
- Authorised service agents may only carry out service and repair work.

## **1.2 Symbols and warning notes**

Various symbols are used in the operating instructions. These symbols indicate possible hazards or bring to the user's attention such technical information that, if not complied with, may lead to personal injury and material damage or to uneconomic operation.

### **Hazard symbols**



#### **WARNING!**

Denotes a possibly hazardous situation. Serious injury and even death can result if such situations are not avoided.



#### **CAUTION!**

Denotes a possibly hazardous situation. Light or slight injury can result if such situations are not avoided.

### **Information symbols**



## **NOTE!**

A note which, if not complied with, can lead to operational stoppages or damage.

### 1.3 Stipulated usage

The shearing plant's intended purpose of use is described in Chapter 2.2, "Purpose of use". Use for any other purposes, particularly on people and dangerous types of animals, especially predators, is expressly forbidden.

The shearing plant must only be used in dry areas.

The details contained in Chapter 2.3, "Technical data", are to be considered as legally binding limit values and characteristic data. The safety check refers only to the portable shearing plant and not to the mechanical shaft and the shearing handpiece.

### 1.4 Basic safety principles

#### 1.4.1 Power supply connections



#### **WARNING!**

- ▶ Never plug the equipment into damaged sockets. Observe the relevant regulations applicable in your country.
- ▶ Maintenance and cleaning work must only be carried out when the equipment is not plugged in.
- ▶ Sockets must be equipped with a circuit breaker (FI).
- ▶ If the SUPPLY CORD is damaged, it must be replaced by the manufacturer, its service agent or similarly qualified persons in order to avoid a hazard.

#### 1.4.2 Safety precautions



#### **WARNING!**

- ▶ Avoid touching machinery that has come into contact with water or other liquids.
- ▶ Never shear wet animals.
- ▶ Children are forbidden from operating the equipment.
- ▶ Lay out the power cable cleanly.
- ▶ Check the power cable occasionally for damage.
- ▶ Keep the power cable well away from machinery & equipment operating in close proximity.
- ▶ Switch off the plant before pulling out the plug.
- ▶ After use remove the plug from its socket. The plant should only be cleaned or the cutter replaced when the plug is removed from the power socket.

- ▶ Avoid kinks or coils in the cable. Never wind the power cable around the plant during periods of storage. This can result in breaks and damage to the insulation.
- ▶ Ensure that animals do not stand on or walk over the cable, and that they do not get caught up in the cable.
- ▶ Keep children away from shearing areas.
- ▶ Never use a damaged plant. Have the machine checked for faults and repaired immediately by an authorised service agent.
- ▶ The air intake for the ventilation holes (Diag. 2+3, pos. a) must be kept clear. Never insert any object into the shearing plant's ventilation holes.
- ▶ Never shear in the vicinity of explosive objects or gases.
- ▶ Never shear with blunt or broken shearing combs and cutters.
- ▶ Avoid any contact with the moving shearing cutters.
- ▶ Store the plant in a clean, dry place to which children and animals have no access.
- ▶ This appliance is not intended for use by persons (including children) with reduced physical, sensory or mental capabilities, or lack of experience and knowledge, unless they have been given supervision or instruction concerning use of the appliance by a person responsible for their safety.
- ▶ Children should be supervised to ensure that they do not play with the equipment.

### 1.4.3 Noise emission / personal protective equipment



Noise emission during operation is less than 70 dB (A), as the noise of the shearing hand-piece is also present during shearing. We recommend that ear protection, safety glasses and gloves are always worn when operating the plant.



Personal protective equipment to be provided by the operator.

### 1.4.4 Residual dangers

Should dangers and hazards occur during operation which are not directly related to the shearing of animals, we request that you inform us of this. This also applies in the event of a technical failure that causes a hazard.

## 1.4.5 Replacement power cable



### NOTE!

If the power cable of this equipment is damaged, it must be replaced by the manufacturer or its after-sales service or a similarly qualified person to avoid dangers.

## 1.4.6 Supervision of children



### WARNING!

Children should be supervised to ensure that they do not play with the equipment.

## 1.5 Operator requirements



### NOTE!

The safe use of the machine places few demands on operating personnel. These must, however, be observed and maintained as a matter of course.

- The operator has experience in dealing with the animals being shorn.
- The operator has read and understood the operating instructions, or has been indoctrinated into the operation of the machine by a skilled person, and the risks and dangers have been pointed out to him.

## 2 Stipulated usage

### 2.1 Component list

#### 2.1.1 Designation of individual parts

Pos. No.	Description	Quantity	Pos. No.	Description	Quantity
1	Handle	1	20	Hexagonal nut	1
2	Upper section ONE	1	21	Speed control sensor ONE	1
3	Reinforcement plate ONE	2	22	Control unit ONE/EVO	1
4	LS-screw	6	23	Hexagonal nut self-securing	2
5	Motor ONE	1	25	PH-screw	1

Pos. No.	Description	Quantity	Pos. No.	Description	Quantity
7	Insulating flange	1	26	Switch support	1
8	Centering washer	1	27	Micro switch	1
9	Countersunk screw	1	28	Socket head cap screw Phillips	2
10	Insulating washer	1	29	Retaining ring for shaft	1
11	Coupling flange	1	30	Washer	1
12	PT-screw counter-sunk	4	31	Spring for switch	1
13	Capacitor	1	32	Lever for switch	1
14	Capacitor	1	33	Cord black	1
15	Drive housing ONE	1	34	Ring spanner	1
16	LS-screw	4	35	Catch spring ONE/EVO	1
17	Socket head cap screw	7	37	PT-screw	1
18	Cable	1	38	Rating plate	1
19	Anti-kink sleeve	1	40	Spacer sleeve (USA only)	1

## 2.2 Purpose of use

The portable shearing plant is specially designed to provide the drive for mechanical shearing handpieces. The complete shearing unit is expressly designed for the shearing of sheep, goats, llamas, alpacas and other members of the Camelidae species.

## 2.3 Technical data

Product name:	ONE
Mains voltage:	see rating plate
Motor output:	see rating plate
Rotary speed:	see rating plate / support plate
Required fuse protection:	see rating plate
Dimensions in mm (W/H/L):	243 x 317 x 209
Weight not including cable:	7.8 kg
Max. ambient temperature:	0 ° - 40 °C
Max. humidity:	10% - 90% (relative)
Noise emission (LpAm):	< 70 dB(A)

We reserve the right to make technical changes and improvements without notice.

## 2.4 Equipment

- Portable shearing plant
- Operating instructions
- Screwdriver
- Drip feed lubricator 100 ml
- Universal grease

### Options

- Flexible drive, worm
- Flexible drive, pin
- Ferrule short
- Shearing handpiece, Icon, worm
- Shearing handpiece, Icon, pin
- Combs and cutters for the shearing handpiece

## 3 Initial start-up

### 3.1 Important notes



#### **WARNING!**

- The voltage specified on the maker's plate and that of the local power supply must match. The plant may only be connected to an AC power supply.
- It is a compulsory that the operator has read the safety regulations.
- In the event that the plant is operated from a generator, the mains supply voltage must not exceed that specified on the maker's rating plate.

### 3.2 Assembling the shearing plant

Pay attention to sufficient fastening of the shearing plant.

#### 3.2.1 Securing / suspending the shearing plant

The shearing plant can be suspended by means of a strong rope or chain. The hole provided in the handle should be used to secure the plant (Diag. 2, pos. c).



### 3.2.2 Assembling the flexible drive

- ▶ Start up the motor (see Chapter 3.3).
- ▶ Press the lock button located at the flexible drive's upper coupling manually (Diag. 3, pos. b).
- ▶ Now push the flexible drive coupling into the shearing plant's coupling sleeve and then position this by means of slight pressure upwards until the lock button engages in the hole (Diag. 3, pos. c).

### 3.3 Switching the shearing plant on / off



#### CAUTION!

Make sure that the ventilation holes are always clear (Diag. 2+3, pos. a). The shears drive remains switched off after the connection to the power supply. The shearing plant is switched on and off respectively via the cord / lever (Diag. 2, pos. b). The drive is switched on by means of one downward pull, and is switched off again by repeating this operation.



Should the power supply be interrupted whilst the drive is running, for safety reasons the motor switches off automatically, which means that the unit must be switched on again via the cord / lever when the power supply is re-established.

## 4 Maintenance

### 4.1 Cleaning

Before commencing any maintenance work disconnect the electrical power supply by pulling out the plug!

Remove any oil and dirt from the shearing plant by means of a dry cloth. Do not use liquids!

### 4.2 Service



#### WARNING!

For safety reasons the portable shearing plant should be subjected to an annual inspection. It is important that the self-tensioning belt is checked periodically, since the functionality of the patented safety cut-out device is dependent on this.

## 4.3 Lubrication

Lubricate the machine in accordance with the following specifications, since a lack of lubrication is the most common source of faults for unsatisfactory shearing results.

### 4.3.1 Portable shearing plant

Requires no lubrication.

### 4.3.2 Flexible drive

#### **prior to each period of operation**

Oil the flexible drive prior to use, and at least each time the cutters are replaced (Diag. 4, pos. a).

#### **after 100 hours of operation**

The flexible drive is fitted with sealed and permanently lubricated ball bearings. The rotating shaft bore must, however, be greased at regular intervals (after approximately 100 hours of operation or every 2 years). To perform this task dismantle the flexible drive in order to remove old grease residue from the shaft bore. Then re-lubricate the shaft bore along its whole length with fresh, high-quality mineral grease.

### 4.3.3 Shearing handpiece

See operating instructions for shearing handpiece.

## 4.4 Storing the machine



### **CAUTION!**

Get into the habit of always giving the shearing plant a good clean after use, store the unit in a dry and clean location out of the reach of children.

## 5 Troubleshooting and repairs

This product has been developed and assembled using the best individual components available. It is designed to give longevity and high performance. If spare parts are used during the life of this product, please ensure that they are genuine Heiniger parts. Failure to use genuine Heiniger spares may reduce the performance of this precision engineered product and will void any warranty claim.

### 5.1 Introduction



#### **WARNING!**

The following troubleshooting guide will aid in determining problems and offer a solution. An authorised service point may only carry out solutions that appears against a dark background.

An authorised service agent is to be contacted in the event of malfunctions that are not contained in this manual.

### 5.2 Troubleshooting

<b>Malfunction</b>	<b>Cause</b>	<b>Rectification</b>
Motor does not run.	No power.	Power supply and/or fuse faulty.
	Cable faulty.	Have the cable replaced.
	Switch faulty.	Have the switch replaced.
	Motor faulty.	Have the motor replaced.
	Control unit faulty.	Have control unit replaced.
	Capacitors faulty.	Have the capacitors replaced.

<b>Malfunction</b>	<b>Cause</b>	<b>Rectification</b>
Motor always switching off.	Cutter blocked.	Remove blockage.
	Mechanical damage in the shearing handpiece or flexi-shaft.	For the purposes of fault finding first of all uncouple the shearing handpiece and restart the plant. If the fault persists, uncouple the rigid drive downtube or flexible drive from the shearing plant. Rectify any damage.
		If the fault still persists, then have the shearing plant repaired.
	Reverberation sensor's magnet faulty.	Have the insulation flange, inc. magnet, replaced.
	Faulty reverberation sensor.	Have the reverberation sensor replaced.
	Power supply too weak.	Check the power supply.
Motor system does not switch off by lock up.	Control unit faulty.	Have control unit replaced.
Shearing unit is noisy or vibrates.	Faulty motor bearing.	Have the motor replaced.
Motor gets hot.	Faulty motor bearing.	Have the motor replaced.
	Ventilation screen dirty.	Clean ventilation screen.
	Malfunctions in the rigid drive downtube / flexible drive and / or shearing handpiece.	Have fault rectified.
Shearing plant cannot be switched off.	Switch faulty.	Have the switch replaced.

## **6 Environmental protection and waste disposal**

### **6.1 Introduction**

The operator bears the responsibility for disposing of the machine in the proper manner. Observe the relevant regulations applicable in your country.

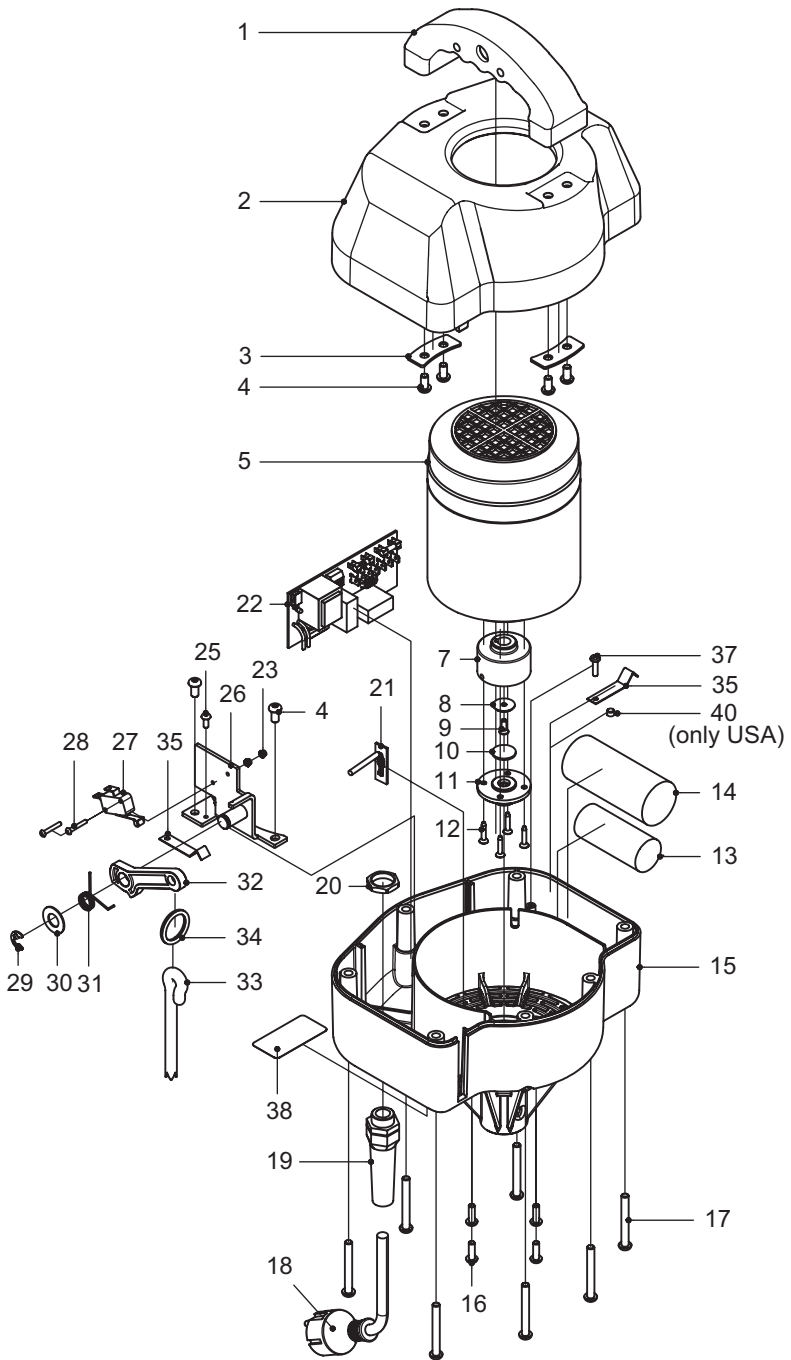
## 6.2 Material groups

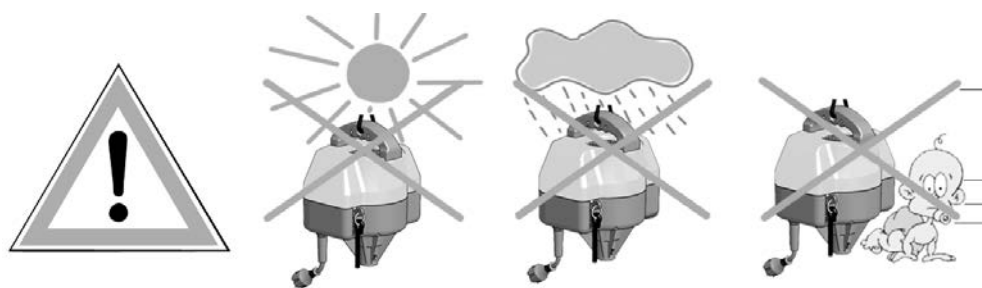
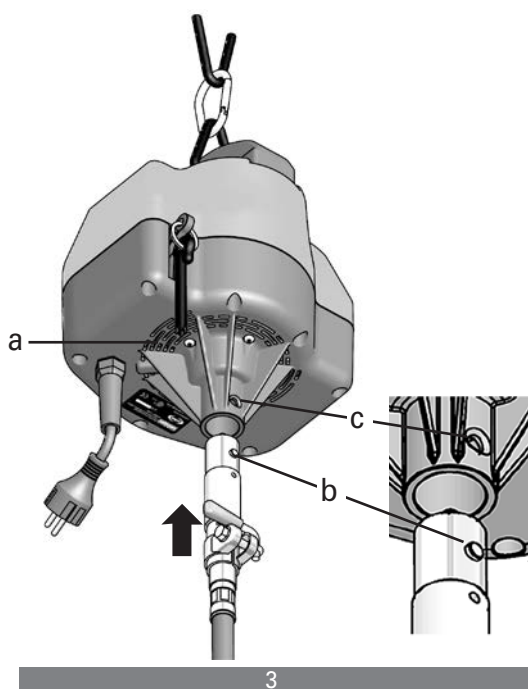
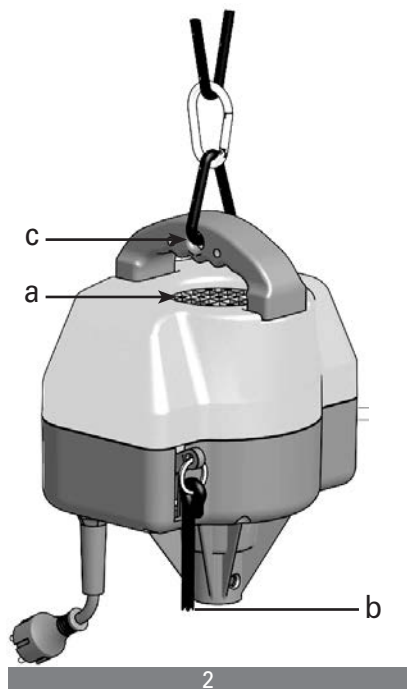
Please hand this in to a service point or your local specialist electrical work-shop when the machine is to be dismantled.

<b>Material</b>	<b>contained in pos. X taken from Diag. 1</b>
Rubber	18
Polyamide PA	2/10/15/19
Polypropylene PP	33
POM	7/32
Iron/steel	3/4/5/8/9/11/12/16/17/23/25/26/28/29/30/31/34/35/37/40
Copper	18
Brass	20/27
Aluminium	16
other substances	38
Electronics	13/14/21/22/27

## 7 Contact address

The sales point or company specified on your guarantee certificate are authorised service points, or, alternatively, refer to the nearest service point in your area.





garantia	Item	Artico	Tuote	
	Artículo	Artikel	Προϊόν	
	Article	Artikel		
	Artikel	Artikel		
	Articolo	Artikkel		
garantie	Serial no.	No. di serie	Serie nummer	
	No. de serie	No. de série	Sarjanro	
	No. de série	Serie nr.	Αρ. σειράς	
	Seriennummer	Serie Nr.		
	Serienr.			
garantie	Date of purchase	Data di vendita	Köpdatum	
	Fecha de compra	Data de compra	Kjøpsdato	
	Date d'achat	Datum van	Ostopäivä	
	Kaufdatum	aankoop	Ημερομηνία αγοράς	
	Købsdato			
warranty	Stamp and signature	Stämpel och		
	Sello y firma	namnteckning		
	Cachet et signature	stempel og		
	Stempel und	underskrift fra forretningen		
	Unterschrift			
	Timbro e firma	Myyjän leima ja allekirjoitus		
	Carimbo e assinatura	kirjoitus		
	Stempel en handtekening	Σφραγίδα και υπογραφή		
Stempel og underskrift				

In case of claim, please return your machine with the instruction manual and the warranty card directly to your local distributor. Please do not cut off the warranty card from the instruction manual.

© 2021 Heiniger AG. All rights reserved.

This instruction manual may not be duplicated or distributed, neither completely nor in extracts, or by electronic or mechanical means (including photocopying), transmitted or used for the purpose of competition without authorisation from Heiniger AG.

Subject to change without notice.

**Contact:**

Heiniger AG  
 Industrieweg 8  
 CH - 3360 Herzogenbuchsee  
 Switzerland

Tel. +41 (0)62 956 92 00  
 marketing(at)heiniger.com

Original-Betriebsanleitung  
 Translation of the original instructions  
 Traduction de la notice originale  
 Traduzione delle istruzioni originali  
 Traducción del manual original  
 Vertaling van de originele gebruikshandleiding  
 Oversættelse af den originale brugsanvisning  
 Översättning av bruksanvisning i original  
 Oversettelse av den originale brukerveiledningen  
 Alkuperäisten ohjeiden käännös  
 Tradução do manual original  
 Μετάφραση πρωτοτύπου οδηγιών χρήσης

