

swiss made

de	Schermaschine	Original-Betriebsanleitung
en	Shearing machine	Translation of the original operating instructions
fr	Tondeuse	Traduction de la notice originale
it	Tosatrice	Traduzione delle istruzioni originali
es	Esquiladora	Traducción del manual original
nl	Scheermachine	Vertaling van de oorspronkelijke handleiding
da	Klipper	Oversættelse af den originale brugsanvisning
sv	Klipper	Översättning av bruksanvisning i original
nb	Klippemaskin	Oversettelse av den originale brukerveiledningen
fi	Karvanleikkukone	Alkuperäisen käyttöohjeen käännös
pt	Máquina de tosquia	Tradução do manual original
el	Κουρευτική μηχανή	Μετάφραση πρωτότυπων οδηγιών χρήσης

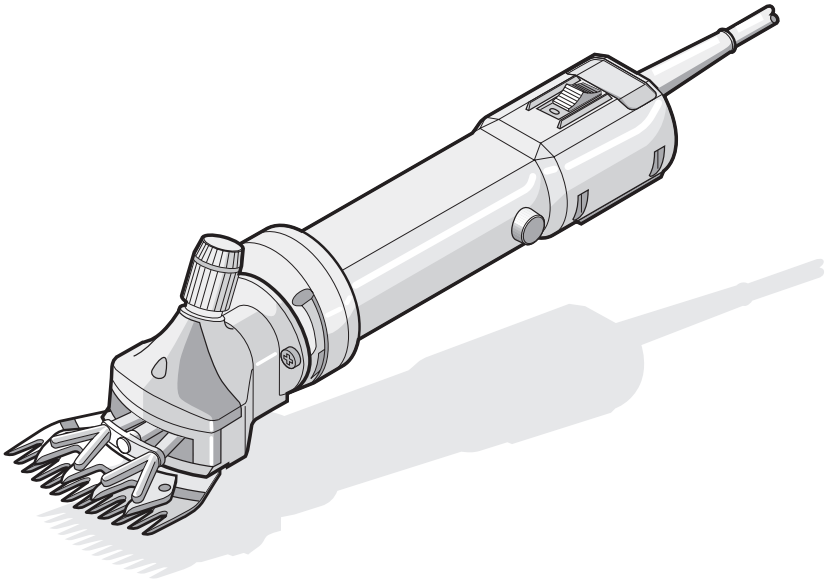


Table of contents

1	Safety regulations	3
1.1	Introduction.....	3
1.2	Symbols and warning notes	3
1.3	Stipulated usage.....	4
1.4	Basic safety principles	4
1.4.1	Power supply connections.....	4
1.4.2	Maintenance and inspection obligation.....	6
1.4.3	Noise emission / personal protective equipment	6
1.4.4	Residual dangers.....	6
1.4.5	Supervision of children.....	6
1.5	Operator requirements	7
2	Stipulated usage	7
2.1	Component list.....	7
2.2	Purpose of use	9
2.3	Technical data	9
2.4	Equipment.....	9
3	Initial start-up	10
3.1	Controls and operating instructions	10
3.2	Shearing adjustment with shearing pressure adjustment knob	11
3.2.1	Before shearing	11
3.2.2	During shearing	12
3.3	Lubrication	12
3.4	ON/OFF switch	13
3.5	Malfunctions	13
4	Maintenance.....	14
4.1	Cleaning.....	14
4.2	Mounting the shearing blades.....	14
4.3	Regrinding the shearing blades	15
4.4	Cleaning the air filter (Figure 12).....	15
4.5	Changing the shearing head (Figure 13, option).....	15
4.6	Storing the shearing machine (Figure 14).....	15
5	Troubleshooting and repairs.....	16
5.1	Introduction.....	16
5.2	Troubleshooting.....	16
5.2.1	Sheep shearing head	16
5.2.2	Motor unit.....	18
6	Environmental protection and waste disposal.....	19
6.1	Introduction.....	19
6.2	Material groups.....	19
7	Contact address	19



IMPORTANT SAFETY INSTRUCTIONS



NOTE!

When using an electrical device, you must always observe basic precautionary measures as described below.
Read all instructions before using the device.

1 Safety regulations

1.1 Introduction

- This chapter describes the safety regulations that are to be taken into consideration as a matter of course when using the shearing machine.
- All persons who carry out work on and with the shearing machine must read the operating instructions.
- The operating instructions are to be kept in a secure place that is accessible at all times.
- Authorised service agents may only carry out service and repair work.

1.2 Symbols and warning notes

Various symbols are used in the operating instructions. These symbols indicate possible hazards or bring to the user's attention such technical information that, if not complied with, may lead to personal injury and material damage or to uneconomic operation.

Hazard symbols



WARNING!

Denotes a possibly hazardous situation. Serious injury and even death can result if such situations are not avoided.



CAUTION!

Denotes a possibly hazardous situation. Light or slight injury can result if such situations are not avoided.

Information symbols



NOTE!

A note which, if not complied with, can lead to operational stop-pages or damage.

1.3 Stipulated usage

The intended purpose of use of the shearing machine is described in Chapter “2.2 Purpose of use”. Shearing of other animal species, especially dangerous ones such as predators and the like, is equivalent to abuse. This can result in dangerous situations for life and limb.

The device is intended for commercial use.

The shearing machine must only be used in dry areas.

The details contained in Chapter “2.3 Technical data”, are to be considered as legally binding limit values and characteristic data.

1.4 Basic safety principles

1.4.1 Power supply connections



DANGER!

In order to reduce the risk of electric shock:

- ▶ Do not touch the device if it falls into water. Immediately pull the plug out of the socket.
- ▶ Do not use when bathing or in the shower.
- ▶ Do not place or store the device in such a way that it can fall or be pulled into a tub or sink. Do not place the device in water or other liquids and do not allow it to fall in.
- ▶ Always unplug this appliance from the electrical outlet immediately after using.
- ▶ Unplug the device from the mains before cleaning it.



WARNING!

In order to reduce the risk of burns, fire, electric shocks or injuries to people:

- ▶ A device must never be left unattended when it is plugged in.
- ▶ This device is not intended to be used by persons (including children) with reduced physical, sensory or mental capabilities, or lack of experience and knowledge, unless they are supervised by a person responsible for their safety or have been given instructions by that person on how to use the device. Children should be supervised to ensure that they do not play with the equipment.
- ▶ Only use the device for the purpose described in these instructions. Do not use any mounting components that are not specified by the manufacturer.
- ▶ Never use the device if the cable or outlet are damaged or if it does not work properly after falling, sustaining damage or landing in water. Take the device to a service centre for inspection and repair.
- ▶ Keep the cable away from heated surfaces.
- ▶ Keep the air openings free of lint, hair, and similar objects.
- ▶ Never drop or insert objects into an opening.
- ▶ Do not use the device outdoors and do not operate it while aerosol products (sprays) are being used.
- ▶ Do not use this device with a damaged or broken comb as this may cause injury to the face.
- ▶ In order to disconnect the device, switch all operating elements to the OFF position (e.g. "0") and then remove the plug from the socket.
- ▶ Do not leave the device in places where it is expected to:
 - be exposed to damage by an animal, or
 - Be exposed to weather conditions.



WARNING!

Keep the device dry.

1.4.2 Maintenance and inspection obligation

- ▶ Only operate the shearing machine when it is undamaged and in proper condition.
- ▶ If a defect is found on the housing or on the electrical cable, it must be repaired by a repair and service centre.

1.4.3 Noise emission / personal protective equipment



The acoustic emission while operating the device is typically 93 dB(A). We recommend that ear protection, safety glasses and gloves are always worn when operating the plant.



Personal protective equipment to be provided by the operator.

1.4.4 Residual dangers



WARNING!

The blades may become hot after prolonged use.

Do not place the device where it is likely to be damaged by an animal or exposed to the weather.

Should dangers and hazards occur during operation which are not directly related to the shearing of animals, we request that you inform us of this. This also applies in the event of a technical failure that causes a hazard.

1.4.5 Supervision of children



WARNING!

Children are forbidden from operating the equipment.

Children should be supervised to ensure that they do not play with the equipment.

1.5 Operator requirements



NOTE!

The safe use of the machine places few demands on operating personnel. These must, however, be observed and maintained as a matter of course.

- The operator has experience in dealing with the animals being shorn.
- The operator has read and understood the operating instructions, or has been indoctrinated into the operation of the machine by a skilled person, and the risks and dangers have been pointed out to him.



KEEP THESE INSTRUCTIONS IN A SAFE PLACE!

2 Stipulated usage

2.1 Component list

Designation of individual parts

Pos.	Description	Qty.	Pos.	Description	Qty.
1	Sheep shearing head case XTRA/12V	1	37	Ventilation blade VS84	(1)
2	Swivelling fork XTRA/12V	1	38	Rotor VS84 240V, incl. item. 37	1
3	Sheep shearing head cover XTRA/12V black	1	38	Rotor VS84 120V, incl. item. 37	1
4	Chicken feet 2.5" XTRA/12V right	Option	39	Play compensation disc 626	1
5	Chicken feet 2.5" XTRA/12V left	Option	40	Ball bearing 626-2Z	1
6	Chicken feet 3" XTRA/12V left	1	41	Socket head cap screw M3 x 72.5	2
7	Chicken feet 3" XTRA/12V right	1	42	Serrated washer M3	2
8	Retaining spring XTRA/12V	1	43	Spacer sleeve VS84	2
9	Gear Z30 XTRA/12V black	1	44	Air flow guide VS84	1
10	Gauge plate 2.5" XTRA/12V	Option	45	Stator VS84 240V	1
11	Gauge plate 3" XTRA/12V	1	45	Stator VS84 120V	1
12	Eccentric shaft XTRA/12V	1	46	Motor housing VS84 Heiniger grey	1
13	Ball XTRA/12V	1	47	Carbons with spring + cover sleeve VS84/HANDY	2
14	Circlip XTRA/12V	1	48	Carbon cap VS84/HANDY	2

Pos.	Description	Qty.	Pos.	Description	Qty.
15	Threaded insert XTRA/12V	1	49	Cable VS84/HANDY with plug EURO	1
16	Centre post XTRA/12V	1	49	Cable VS84/HANDY with plug AUS	1
17	Comb plate screw, sheep	2	49	Cable VS84/HANDY with plug USA	1
18	Adjusting knob XTRA/12V Heiniger	1	50	Anti-kink sleeve VS84/HANDY EURO/AUS	1
19	Locknut XTRA/12V	1	50	Anti-kink sleeve VS84/HANDY/12V USA	1
20	Sliding sleeve XTRA/12V	1	51	PT screw KA25 x 6	1
21	Ball bearing 608-2RS	1	52	Switch housing, top VS84 black	1
22	Raised countersunk screw M4 x 28	2	53	Shoulder screw M3.5	1
23	Countersunk screw M4 x 8	2	54	Overcurrent protection switch VS84 1A / 240V	1
24	Retaining ring for shaft Ø6	1	54	Overcurrent protection switch VS84 1.8A / 120V	1
25	PH-screw M4 x 10	2	55	Main switch VS84/HANDY/12V	1
26	Ball bearing 608-2Z	1	56	Capacitor 0.15µF VS84/HANDY 240V	1
27	Sheep shearing head 3" XTRA/12V with comb plates	1	56	Capacitor 0.15µF VS84/HANDY 120V	1
28	Socket head cap screw M3.5 x 8	7	57	Cable clamp VS84/HANDY AUS	1
29	Gearbox housing XTRA/12V black	1	57	Cable clamp VS84/HANDY/12V EURO/USA	1
30	Gear Z21/12 VS84	1	58	Clamp VS84/HANDY/12V	1
31	Axis XTRA/12V	1	59	Socket head cap screw M3 x 25	1
32	Sealant XTRA/HANDY/12V	1	60	Cover VS84/HANDY/12V	1
33	Centring flange VS84/HANDY	1	61	Switch housing, bottom VS84/HANDY/12V black	1
34	Play compensation disc 608	1	62	Countersunk screw M3 x 6	4
35	Ball bearing 608-2Z	1	63	Filter cover complete VS84/HANDY/12V black	1
36	Retaining ring for bores Ø22	1		Converter EURO/GB plug	

2.2 Purpose of use

The shearing machine is used exclusively to shear sheep, goats and llamas, alpacas and other camels. By changing the standard shearing head, the range of use can also be extended to cattle and horses. Other uses, in particular the use of the machine on people, are expressly prohibited.

2.3 Technical data

Product name	Xtra
Mains voltage	see rating plate
Motor output	see rating plate
Rotary speed	see rating plate
Required fuse protection	see rating plate
Dimensions (W x H x L)	approx. 80 mm x 95 mm x 350 mm
Weight not including cable	1560 g
Max. ambient temperature	0° - 40°C
Max. humidity	10% - 90% (relative)
Noise emission (L_{pAm})	93 dB(A) (DIN-45635-1/04.84 + BG-PAS 26)
Acceleration (a_{vhw})	11 m/sec ² (EN 28662-1/01.93)

We reserve the right to make technical changes and improvements without notice.

2.4 Equipment

- Shearing machine with shearing head
- Pair of shearing blades
- Special screwdriver
- Bottle of special lubricating oil
- Cleaning brush
- Operating instructions
- Case for transport and storage

Options

- Alternative shearing head for replacement (for cattle and horses)
- Diverse shearing blades

3 Initial start-up

3.1 Controls and operating instructions



WARNING!

The improper use of electrical devices, especially animal breeding devices, is associated with dangers! Therefore, before putting the machine into operation, observe the following accident-preventing measures:

- The voltage specified on the maker's plate and that of the local power supply must match. The plant may only be connected to an AC power supply.
- Avoid any contact with the moving shearing blades.
- Even with the machine switched off, do not handle the area round the shearing blades as long as the machine is still connected to a power source. Whenever working on the shearing blades/head, always first disconnect the power supply.
- Avoid contact with a machine that is in contact with liquids. Never shear wet animals. Liquid that has penetrated the machine reduces the electrical insulation. There is a danger of electric shock or short circuit. Clean the machine only when it is dry, using a brush or the cleaning brush.
- An electric cable lying loose on the floor over a long distance can get caught and become a danger. Before starting shearing, lay the cable carefully and securely. Avoid kinks or coils in the cable. Animals should not be able to stand on, walk over or get caught in the power cable. Never wrap the power cable around the machine and keep the power cable away from hot surfaces and objects. This can result in breaks and damage to the insulation. Check the cable regularly for damaged spots.
- Turn the machine switch to OFF (position 0, Fig. 2) before unplugging the machine.
- Use only original shearing blades. Do not use damaged shearing blades with blunt or broken teeth. Only work with sharp shearing blades sharpened by a specialist workshop.
- We recommend that you do not use the comb for more than one hour and the upper blade for more than 15 minutes.
- Before beginning shearing, remove foreign objects from the coat (wire, wood etc.).

- Wear suitable work clothes. Do not wear loose-fitting clothing or jewellery. These can get caught in the moving machine parts. Wearing safety glasses and hearing protection is strongly recommended.
- Never insert an object into an opening of the machine.
- The noise of the clipper can trouble animals. A kick or the body weight of the animal can cause significant injuries. Fix the animal sufficiently, approach the animal from the front and switch on the machine already in the animal's field of vision.
- Shearing of animals should only be done when unauthorised persons do not have access to the shearing site.
- Only shear in well-ventilated areas (dust) and never near explosive objects or gases.
- Generally, never plunge the shearing machine and shearing head into liquids such as water, soapy water, diesel, petrol, or anything else. This leads to considerable damage to the mechanics and engine.



WARNING!

These safety instructions must be followed all the time. It is recommended to always use a residual current safety plug when working with electrical devices.

3.2 Shearing adjustment with shearing pressure adjustment knob

Make the setting during commissioning as follows:

3.2.1 Before shearing

When the machine is switched off

1. Ensure that the tapered pins of the chicken feet engage exactly in the positioning holes of the upper blade (Fig. 3, item 2).
2. Screw the shearing-pressure adjustment knob down until the first noticeable resistance is felt (Fig. 3, item 1).
3. Then screw the shearing pressure adjustment knob another 1/4 turn.
4. Put the shearing machine into operation. Loosen the shearing pressure adjustment knob (Fig. 7) until the shearing blades have almost no contact pressure (noise level increases).



WARNING!

If the shearing pressure adjustment knob is released too much, the upper blade can fly off and result in injuries.

Tighten the shearing pressure adjustment knob only slowly until the noise level becomes dull and you feel resistance when tightening the shearing pressure adjustment knob. Turn the shearing pressure adjustment knob back 1/4 turn. The pressure should be well adjusted.

After each new setting, check the cutting power on the animal and only then continue turning.

3.2.2 During shearing



NOTE!

The patented shearing system works with much less contact pressure than conventional sheep shearing machines. Thus, care must be taken that the shearing tension is not set too high. Adjust the shearing tension very slightly from time to time during shearing (max. 1/4 turn).

If shearing is started with the shearing pressure adjustment knob insufficiently tightened, hair may accumulate between the shearing blades. This negatively affects the further course of the shearing or even makes it impossible. If this is the case, the shearing blades must be dismantled, cleaned, oiled and refitted as described in 4.2.

3.3 Lubrication

Before and during shearing

For a good shearing result and to increase the service life of the machine and shearing blades, a thin layer of oil on the upper and lower blades (Fig. 4, item, 1+3) is essential. All other moving parts in the shearing head must also be well oiled. Drip oil onto the shearing blades and into the lubrication hole provided on the shearing head (Fig. 4, item 2).

Only use our special oil or a paraffin oil conforming to the ISO VG 15 specification. This oil is toxin class free and does not cause any irritation on skin or mucous membranes. This paraffin oil degrades to about 20% after 21 days (CEC-L-33-T-82).



NOTE!

Lack of lubrication is the most common cause of failure for unsatisfactory shearing results.

Insufficient oiling of the shearing blades leads to heating and a reduced service life of the blades.

The shearing blades and the shearing head must be sufficiently oiled during shearing so that they do not run dry.

3.4 ON/OFF switch

The switch has two positions (Fig. 2 shows position 0).

- Position 0: Machine switched off
- Position I: Machine switched on



NOTE!

Always use the slide switch (Fig. 2) to turn the machine on and off. Check the switch position before plugging in the cable.

3.5 Malfunctions

Overload protection switch (Fig. 5)

The overload circuit breaker protects the machine from impermissible mechanical and thermal stress. If the button of the overload protection switch pops out (the machine stops), immediately switch off the machine additionally with the slide switch (Fig. 2) (position = 0).

Reasons for the overload circuit breaker popping out are:

Defective motor, excessive shearing tension, blockage of the shearing head, clogged air filter, etc.

Remedy the defect with the power plug disconnected. The machine can be restarted after a few minutes by pressing in the overload protection switch button.

For other malfunctions, see also Troubleshooting in chapter 5.2.

4 Maintenance



NOTE!

Before commencing any maintenance work disconnect the electrical power supply by pulling out the plug.

Do not handle the area round the shearing blades as long as the machine is still connected to a power source. Whenever working on the shearing blades/clipper head, always first disconnect the power supply.

4.1 Cleaning

Cleaning the shearing head and clipper blades

After finishing the shearing, remove oil from the machine by wiping with a dry cloth and carefully clean the shearing head and shearing blades with a dry brush. Then oil the parts to prevent rusting. Even the smallest rust spots on the shearing blades impair shearing or make it completely impossible.

4.2 Mounting the shearing blades

A pair of shearing blades consists of a lower blade (Fig. 6, item 2) and upper blade (Fig. 6, item 1). When mounting the blades, make sure that the correct surfaces are placed on top of each other. The blades are mounted as follows:

- ▶ Loosen the shearing pressure adjustment knob (Fig. 7) and place the machine on a hard surface so that the blade fixing screws (Fig. 8) are facing upwards.
- ▶ Loosen the screws and remove the two old shearing blades.
- ▶ Make sure that the new shearing blades are clean. In particular, make sure that the sanded surfaces are free of dirt. Otherwise, satisfactory shearing performance cannot be achieved even with newly sharpened shearing blades.
- ▶ Place the new upper blade in the driving cones of the chicken feet (Fig. 9 + Fig. 3, item 2) and push the new comb plate between the loosened screws (Fig. 10).
- ▶ Now tighten the blade fixing screws until you can just move the new comb plate sideways by hand.
- ▶ Now turn the machine over so that the shearing pressure adjustment knob is pointing upwards again.
- ▶ It is now important that you place the blades on top of each other so that the ground surface of the comb blade protrudes approx. 1.5 - 2.0 mm above the tips of the upper blade (Fig. 11).
- ▶ Once you have adjusted the shearing blades, fix the position of the comb plate and tighten the blade fixing screws firmly.

- ▶ Check that the shearing blades are correctly mounted and that the driving cones of the chicken feet (Fig. 3, item 2) are in the holes provided for them on the upper blade. Now tighten the shearing pressure adjustment knob until the upper blade is pressed onto the comb plate and you feel a slight resistance.

4.3 Regrinding the shearing blades

Only work with sharp shearing blades. Replace blunt or defective blades without teeth. The correct resharpener of shearing blades is only to be done by special machines or by a specialist. In that case, contact your service centre.

4.4 Cleaning the air filter (Figure 12)

The air filter element is located on the underside of the motor part of the machine. The air filter can be removed from the machine for cleaning. Regular cleaning of the element with a dry brush is essential. Make sure that no foreign objects get into the machine while cleaning the air filter.



WARNING!

The machine must never be operated without an air filter!

4.5 Changing the shearing head (Figure 13, option)

To change the shearing head from "sheep" to "livestock" or vice versa, loosen the two screws on the shearing head. Remove one shearing head and mount the other one (grease the gear Fig. 1a, item 8 if necessary). Retighten the two screws.

4.6 Storing the shearing machine (Figure 14)



CAUTION!

Only store the shearing machine in dry rooms and in the case supplied. If liquid is suspected to have entered the machine, do not switch it on again. There is a danger of electric shock or short circuit. Hand over the shearing machine to a service centre.

Get into the habit of always giving the shearing machine a good clean after use, oiled and with the shearing system relaxed in the equipment case, store the device in a dry and clean location out of the reach of children.

5 Troubleshooting and repairs

This product has been developed and assembled using the best individual components available. It is designed to give longevity and high performance. If spare parts are used during the life of this product, please ensure that they are genuine Heiniger parts. Failure to use genuine Heiniger spares may reduce the performance of this precision engineered product and will void any warranty claim.

5.1 Introduction



WARNING!

The following troubleshooting guide will aid in determining problems and offer a solution.

For information on authorised service points, see chapter "7 Contact address".

An authorised service agent is to be contacted in the event of malfunctions that are not contained in this manual.

5.2 Troubleshooting

5.2.1 Sheep shearing head

Malfunction	Cause	Rectification
The upper blade does not move across the full bearing surface.	Retaining spring broken.	Notify customer service
	Eccentric shaft and/or ball and/or swivelling fork worn out	
	Bearings heavily worn	
Top blade does not move	Faulty gear Z30 black (Fig. 1a, item 8)	Replace gear
	Faulty reduction gear in motor unit	Notify customer service
	Eccentric shaft is broken or bent	
	Ball is missing.	
Shearing pressure adjustment knob automatically releases.	Circlip missing (Fig. 1a, item 4)	Replace circlip and fit so that the shearing pressure adjustment knob can be easily turned to tighten and clamped to loosen
	Threaded insert is loose.	Seal threaded bush using "Loctite" or a similar product

Malfunction	Cause	Rectification
Not enough pressure can be applied to the upper blade.	Retaining spring broken.	Notify customer service
	Sliding sleeve is missing (Fig. 1a, item 6)	Replace sliding sleeve
	Sliding sleeve is worn (Fig 1a, item 6)	Replace sliding sleeve
	Swivelling fork is worn at the top	Notify customer service
	Chicken feet are worn (Fig 1a, item 2)	
Chicken feet fall out.	Securing cams on the retaining spring are broken.	Notify customer service
Cuts poorly	Comb plate or upper blade is blunt	Notify customer service
	Shearing tension too low	Increase the pressure and tighten the shearing pressure adjustment knob (Fig. 3, item 1).
	Blade was not sharpened properly	Notify customer service
Does not cut	Comb plate is not mounted properly	Move the upper blade back to the comb plate by 1.5 mm (Fig. 11)
	Ball is missing (Fig. 1a, item 25)	Notify customer service
	Faulty gear or reduction gear (Fig. 1a, item 8)	Replace gear
		Notify customer service
Shearing head is worn out (Fig. 1a, item 23)	See items 1-4	
Shearing head gets very hot	Shearing tension too high	Reduce the shearing tension and have the blades grounded again if necessary
	Ball (Fig. 1a, item 25) without lubricant film	Oiling the ball
	Sliding sleeve (Fig. 1a, item 6) without grease	Greasing sliding sleeve
	Bearings worn out	Notify customer service

5.2.2 Motor unit

Malfunction	Cause	Rectification
Motor is not running	No power.	Power supply and/or fuse faulty.
	Cable faulty.	Notify customer service
	Switch or motor defective	
	Overload protection switch off	Switch on (Fig. 5)
Overload protection switch always switches off (Fig. 5)	Blade blocked (Fig. 6)	Remove blockage.
	Air filter clogged (Fig. 12)	Clean or replace air filter
	Rotor or stator faulty	Notify customer service
	Faulty overload protection switch	
Motor runs very slowly	Carbons consumed	Notify customer service
	Rotor or stator faulty	
Motor unit becomes hot.	Air filter clogged, air can no longer circulate (Fig. 1a, item 28)	Clean air filter in dismantled state with brush or replace filter
	Shearing tension too high	Tighten the shearing pressure adjustment knob less strongly (Fig. 7). If the blades no longer cut, they must be reground or replaced
	Bearing faulty (penetration of cleaning fluid)	Notify customer service
Motor unit makes a very strong whistling noise	Reduction gears and axles without lubricant film	Notify customer service
Motor vibrates	Rotor runs out of round (generated by a strong impact)	Notify customer service
	Bearings worn out	

6 Environmental protection and waste disposal

6.1 Introduction

The operator is responsible for the proper disposal of the shearing blades and the shearing machine after they are no longer in working order. Please observe the relevant regulations applicable in your country.

6.2 Material groups

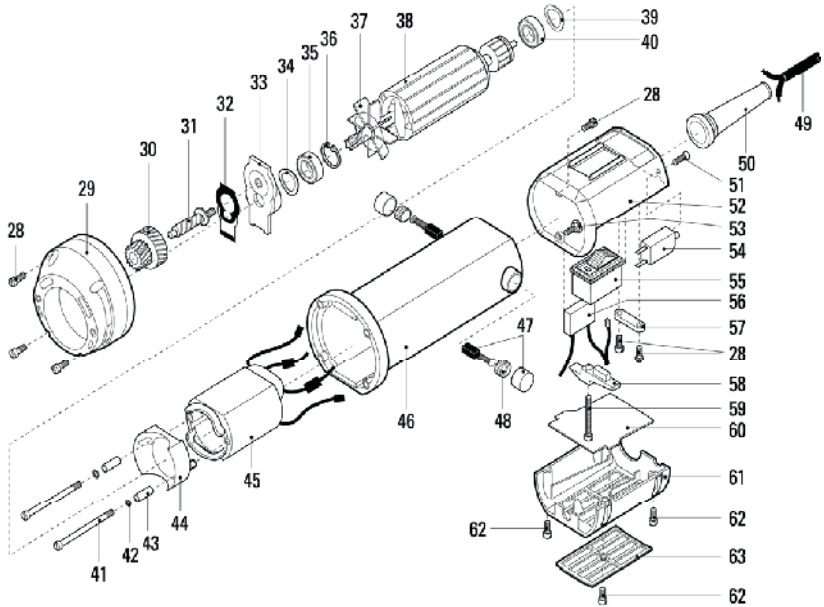
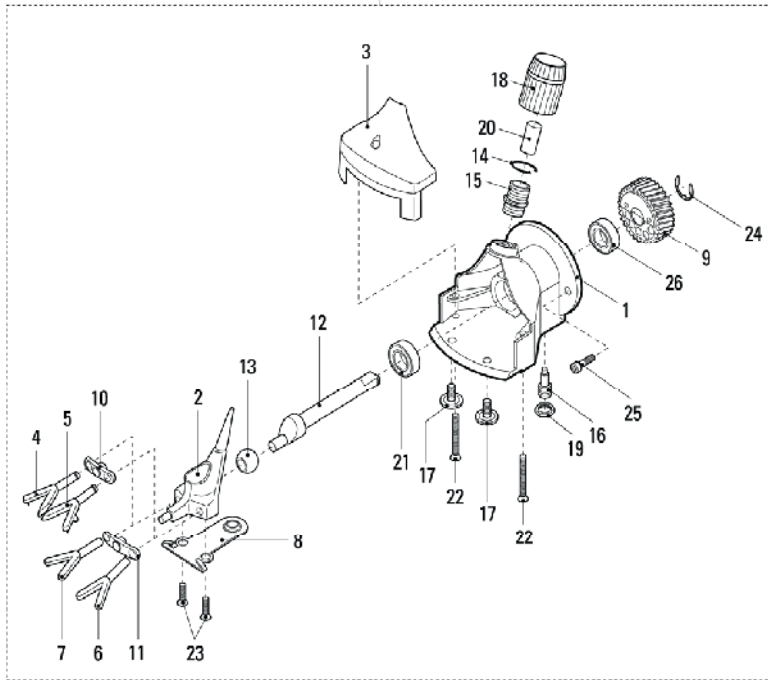
Please hand this in to a service point or your local specialist electrical workshop when the machine is to be dismantled.

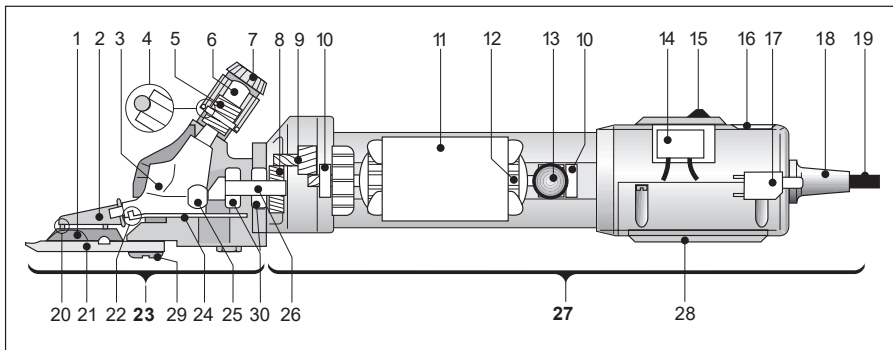
Material	Contained in pos. X taken from Fig. 1a
Rubber	18 / 19
Polyamide	8 / 27 / 28
Iron/steel	1 / 2 / 3 / 4 / 5 / 6 / 7 / 8 / 9 / 10 / 11 / 12 / 21 / 22 / 24 / 25 / 26 / 28 / 29 / 30
Copper	11 / 12 / 17 / 19
Brass	13 / 15 / 17 / 27
Aluminium	23
other substances	9 / 10 / 13 / 14 / 15 / 17 / 30

7 Contact address

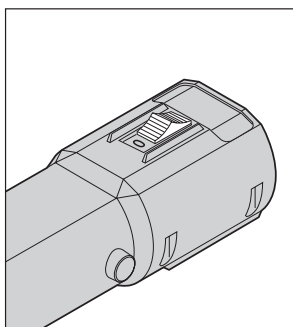
The sales point or company specified on your guarantee certificate are authorised service points, or, alternatively, refer to the nearest service point in your area.

27

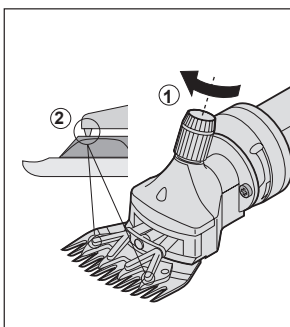




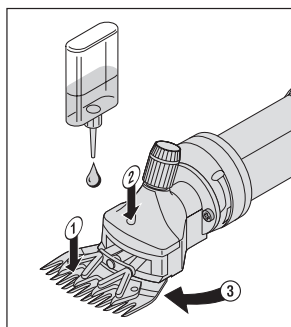
1a



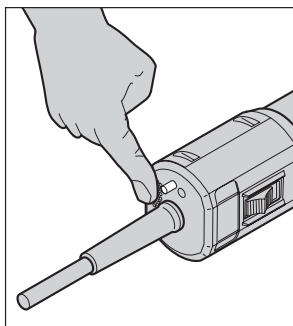
2



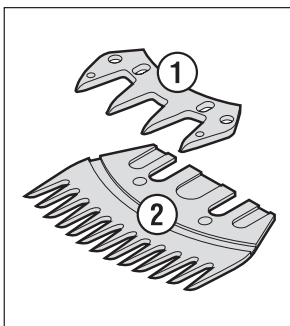
3



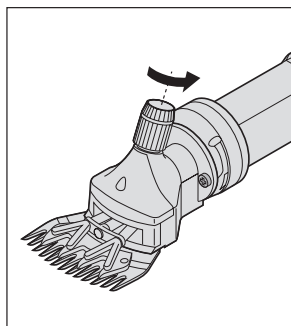
4



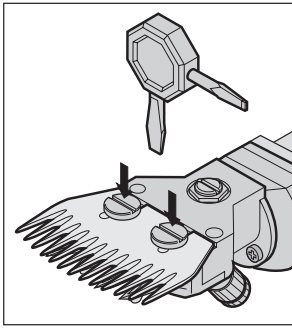
5



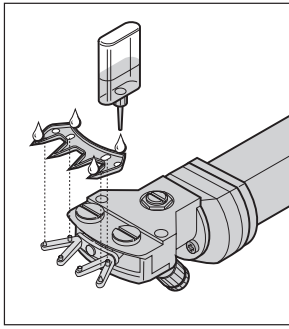
6



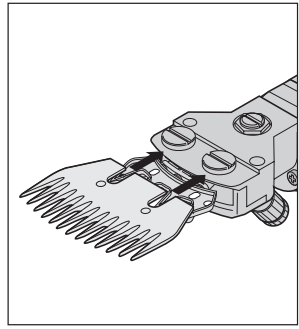
7



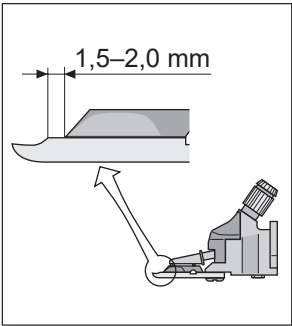
8



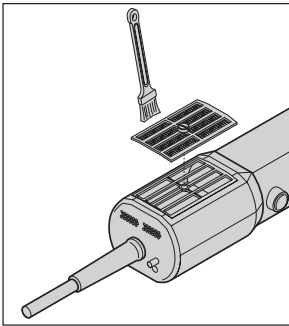
9



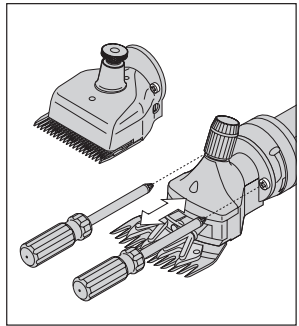
10



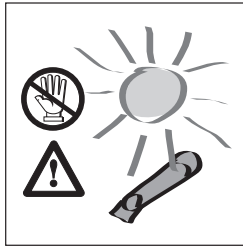
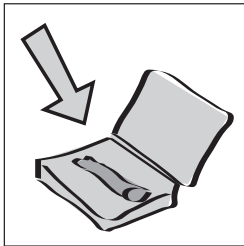
11



12



13



14

garantia	Item	Artikel	
	Artículo	Artikel	
	Article	Artikel	
	Artikel	Artikkel	
	Articolo	Tuote	
	Artico	Προϊόν	
garantie	Serial no.	Serie nr.	
	No. de serie	Serie Nr.	
	No. de série	Serienr.	
	Seriennummer	Serie nummer	
	No. di serie	Sarjanro	
	No. de série	Αριθμός σειράς	
garantie	Date of purchase	Datum van aankoop	
	Fecha de compra	Købsdato	
	Date d'achat	Køpdatum	
	Kaufdatum	Kjøpsdato	
	Data di vendita	Ostopäivä	
	Data de compra	Ημερομηνία αγοράς	
warranty	Stamp and signature		
	Sello y firma		
	Cachet et signature		
	Stempel und Unterschrift		
	Timbro e firma		
	Carimbo e assinatura		
	Stempel en handtekening		
	Stempel og underskrift		
	Stämpel och namnteckning		
	Stempel og underskrift fra forretningen		
	Myyjän leima ja allekirjoitus		
Σφραγίδα και υπογραφή			

In case of claim, please return your machine with the instruction manual and the warranty card directly to your local distributor. Please do not cut off the warranty card from the instruction manual.

© 2023 Heiniger AG. All rights reserved.

This instruction manual may not be duplicated or distributed, neither completely nor in extracts, or by electronic or mechanical means (including photocopying), transmitted or used for the purpose of competition without authorisation from Heiniger AG.

Subject to change without notice.



Le produit est recyclable, soumis à la responsabilité élargie du producteur et doit faire l'objet d'un tri sélectif

Contact:

Heiniger AG
 Industrieweg 8
 CH - 3360 Herzogenbuchsee
 Switzerland

Tel. +41 (0)62 956 92 00
 marketing(at)heiniger.com

Original-Betriebsanleitung

Translation of the original operating instructions
 Traduction de la notice originale
 Traduzione delle istruzioni originali
 Traducción del manual original

Vertaling van de oorspronkelijke handleiding
 Oversættelse af den originale brugsanvisning
 Översättning av bruksanvisning i original
 Oversættelse av den originale brukerveiledningen
 Alkuperäisten käyttöohjeen käännös
 Tradução do manual original
 Μετάφραση πρωτότυπων οδηγιών χρήσης

