

swiss made

de	Schafschermaschine	Betriebsanleitung
en	Sheep clipper	Instruction Manual
fr	Tondeuse pour moutons	Mode d'emploi
it	Tosatrice per ovini	Istruzioni per l'uso
es	Esquiladora para ovejas	Instrucciones de uso
nl	Schaapscheermachine	Handleiding
da	Fåreklipper	Driftsvejledning
sv	Fårklippmaskin	Användarinstruktion
nb	Saueklippemaskin	Instruksjonsbok
fi	Keritsin lampaille	Käyttöohjeet
pt	Máquina de tosquia para ovinos	Manual de instruções
el	Κουρευτική μηχανή προβάτων	Οδηγίες χρήσης



Table of contents

1	Safety	3
1.1	Generalities	3
1.2	Personnel requirements	3
1.3	Dangers that can be caused by the device	4
1.3.1	Danger from electrical current	4
1.3.2	Animals	5
1.3.3	Blades	5
1.4	Personal Protective Equipment (PPE)	6
2	Generalities	6
2.1	Guarantee conditions	7
2.2	Customer service	7
2.3	Limitation of liability	7
2.4	Copyright	7
2.5	Symbols used	7
2.6	Stipulated usage	8
3	Technical data	9
4	Assembly and function	9
4.1	Construction	9
4.2	Functional description	10
5	Transport, packaging and storage	10
5.1	Scope of delivery	10
5.2	Packaging	10
5.3	Storage	10
6	Operation	11
6.1	Requirements at the place of use	11
6.2	Adjusting the clipping pressure	11
6.3	Switching the clipper on and off	12
6.4	Using the clipper	12
6.5	Replacing the clipping blades	12
6.6	Lubrication	14
6.7	Cleaning	15
7	Troubleshooting	16
7.1	Safety instructions	16
7.2	Causes of malfunctions and their rectification	16
8	Spare parts	18
9	Disposal	19

1 Safety

1.1 Generalities



DANGER!

DANGER FROM DISREGARDING THE SAFETY INSTRUCTIONS!

Disregarding the operating instructions and safety precautions presented in these operating instructions will lead to serious injury to people as well as damage to the device.

- ▶ The warnings and instructions in these operating instructions must be observed.

Observe the following safety instructions:

- ▶ Do not leave the clipper unattended as long as the plug is plugged in.
- ▶ Store the clipper out of reach of children.

1.2 Personnel requirements

- This clipper may be operated only by persons who can be expected to carry out their work responsibly. Persons whose ability to react is undermined by, for example, drugs, alcohol or medication should not be allowed to use the device.
- The operator must be experienced in handling the animals to be clipped.
- Children are strictly prohibited from operating the device.

Unauthorised persons



CAUTION!

DANGER FOR AND FROM UNAUTHORISED PERSONS!

Unauthorised persons who do not meet the requirements described here will be unable to recognise dangers in the work area.

- ▶ Prohibit access by unauthorised persons to the location where the clipping is being performed.
- ▶ If in doubt, approach the persons and instruct them to leave the work area.
- ▶ Suspend work until the unauthorised persons have left the work area.

1.3 Dangers that can be caused by the device

1.3.1 Danger from electrical current



DANGER!

DANGER OF FATAL ELECTRIC SHOCK!

Fatal electric shocks can result from contact with electrically live conductors or components!

- ▶ Always disconnect the charger power cord from the mains by grasping the plug, not the cord.
- ▶ Before every use, check the clipper for externally visible damage. If the clipper is damaged, do not use it.
- ▶ Only ever insert the charger's electrical plug into an undamaged socket.
- ▶ Never wrap the power cable around the clipper, and keep the clipper away from hot surfaces and objects.
- ▶ Only permit repairs to the clipper to be made by authorised dealers or the factory customer service department; this applies especially to the replacement of a damaged power cord.
- ▶ Before plugging the clipper in, compare the electrical connection data (voltage and frequency) on the nameplate with that of your electric mains. These data must be identical so that no damage occurs to the device. If in doubt, ask your specialised electrical dealer.
- ▶ Do not under any circumstances open the housing of the clipper. If voltage-bearing connectors are disturbed or the electrical and mechanical construction is modified, there is risk of electric shock.
- ▶ Keep moisture away from the clippers. This can cause a short circuit. If you suspect that moisture has penetrated the device, do not switch it on again; instead take it to a repair shop.
- ▶ Never clip wet animals.
- ▶ Clean the clipper only when it is dry, using a brush or the enclosed cleaning brush.
- ▶ Never submerge the clipper in water or other liquids.
- ▶ Always switch the clipper off before working on it. Pull the plug from the socket to prevent the device from being switched on inadvertently.

- ▶ Never operate this appliance with the air openings blocked or while on a soft surface, such as a bed or couch, where it is possible for the air openings to be blocked. Keep the air openings free of lint, hair, and similar objects.

1.3.2 Animals



CAUTION!

DANGER OF INJURY BY ANIMALS!

The noise of the clipper can trouble animals. A kick, an attack or the body weight of the animal can lead to injuries.

- ▶ Just persons being experienced in handling with animals are allowed to clip the animals.
- ▶ Before beginning shearing, remove foreign objects from the coat (wire, wood etc.).
- ▶ Secure the animal sufficiently and calm it before starting work.
- ▶ Proceed with caution when working.
- ▶ Call in a second person if necessary.

1.3.3 Blades



CAUTION!

DANGER FROM MOVING COMPONENTS!

The moving clipping blade and its sharp edges can cause injuries.

- ▶ Proceed with caution when working.
- ▶ Avoid any contact with the moving clipping blades.
- ▶ Do not touch the area around the clipping blades whilst the machine is still plugged in to a power source, even if it is switched off. Before working on the clipping blade/clipping head, always disconnect the electrical power first.
- ▶ Do not use damaged shearing blades with blunt or missing teeth. Only work with sharp shearing blades sharpened by a specialist workshop.
- ▶ The upper blade of the shearing head is only held by the tapered pins of the chicken feet. If the shear-pressure adjustment head is released too much, the upper blade can fly off and result in injuries.



CAUTION!

DANGER OF BURNS!

Insufficient oiling of the clipping head will cause it to become hot. This may agitate the animals.

- ▶ When clipping, oil the clipping blades and clipping head through the lubrication opening provided for this purpose at least every 15 minutes, so that the blades do not run dry.
- ▶ The shearing blades may become hot after prolonged use.

1.4 Personal Protective Equipment (PPE)



CAUTION!

DANGER OF INJURY THROUGH INCORRECT OR MISSING PROTECTIVE EQUIPMENT!

Personal protective equipment is required when working, in order to minimise the possibility of endangering health.

- ▶ Always wear the protective equipment required for the current task when performing work.



Antislip shoes. For protection against slipping on slippery underground.



Protective goggles to protect eyes from flying parts.



Close-fitting protective clothing with low resistance to tearing, with tight sleeves and no protruding parts. This is primarily to prevent injury if they become caught between moving parts of the machine.

Do not wear rings, chains or other jewellery.



Wear work gloves to protect against injury.



The acoustic emission while operating the device is typically 72 dB(A). We recommend that you always wear ear protection when working with the device.

2 Generalities

This manual facilitates a safe and efficient machine handling. Read these instructions carefully before starting operation.

Basic requirements for a safe operation are the adherence of all the information regarding safety and operation in this manual.

Keep this manual permanently. If you hand on the equipment to other persons, provide them with this manual.

2.1 **Guarantee conditions**

The guarantee conditions are included in the general terms and conditions of the manufacturer.

2.2 **Customer service**

For technical information, our customer service and our authorised service centres are at your disposal.

Furthermore, our staff is interested in new information and experience resulting from the operation which could be useful for the improvement of our products.

2.3 **Limitation of liability**

All data and information in this instruction manual were arranged in consideration of the current standards and regulations and state of the art as well as our realizations and experiences of many years.

The manufacturer assumes no liability for disadvantages due to:

- Disregarding the operating instructions.
- Non-intended uses of the device.
- Assignment of not instructed personal.
- Technical modifications.
- Use of non-original spare parts.

The actual scope of delivery can differ from specially designed models, from additional ordering options or due to the latest state of the art from the here described annotations and illustrations.

2.4 **Copyright**

This document is protected by copyright. Any kind of reproduction or copying, in whole or in part, or the reproduction of images, even when changed, may be performed only with the written agreement of the manufacturer.

2.5 **Symbols used**



DANGER!

A WARNING AT THIS DANGER LEVEL DESIGNATES AN IMMINENTLY DANGEROUS SITUATION.

If the dangerous situation is not avoided, it will lead to death or serious injury.

- ▶ To avoid the danger, follow the instructions shown.



CAUTION!

A WARNING AT THIS DANGER LEVEL DESIGNATES A POSSIBLY DANGEROUS SITUATION.

If the dangerous situation is not avoided, it can lead to injury.

- ▶ To avoid the danger, follow the instructions shown.



CAUTION!

A WARNING AT THIS DANGER LEVEL DESIGNATES POSSIBLE PROPERTY DAMAGE.

If the dangerous situation is not avoided, it can lead to property damage.

- ▶ To avoid the danger, follow the instructions shown.



NOTE!

- ▶ This advice designates additional information that simplifies operation of the device.

2.6 Stipulated usage

The device is designed exclusively for shearing sheep, goats and llamas, alpacas and other camelidae.

Any other use or use extending beyond the above is considered unauthorised.



CAUTION!

Danger from unauthorised use!

Danger can result from improper use or use for a purpose other than that intended.

- ▶ Use the device only as intended.
- ▶ Limit yourself to the procedures described in these operating instructions.

Claims of any nature for damage resulting from unauthorised use will not be accepted.

Such use is entirely at the operator's own risk.



CAUTION!

Danger due to incorrect use!

In particular, the following applications of the device are prohibited:

- ▶ Using the machine on persons.
- ▶ Clipping other animals, in particular dangerous animals such as beasts of prey.

3 Technical data

Handle	Ø 54 mm
Length	301 mm
Weight (without charger power cord)	1.18 kg
Voltage	See rating plate on the device
Maximum current consumption	
Frequency	
Power drawn	
Rotary speed	
Noise emission (L_{PA})	72 dB(A) (EN 60745-1:2009)
Uncertainty K	3 dB
Ambient temperature range	0 - 40 °C
Maximum relative humidity	10 - 90%
Vibration a_{hv}	12,8 m/s ²
Uncertainty K	1,5 m/s ²

We reserve the right to make technical changes and improvements without notice.

4 Assembly and function

4.1 Construction



Fig. 1

4.2 Functional description



Fig. 2

The clipper is used to shear sheep, goats and llamas, alpacas and other camelidae. Two comb-shaped blades are the cutting tool. The comb plate (2) closest to the skin of the animal is fixed and attached to the housing. The top blade (3) is agitated crossways that one. The upper blade is set in motion with the help of two chicken feet. The clipping pressure between the blades is adjusted via the adjustable head (1).

5 Transport, packaging and storage

5.1 Scope of delivery

- 1 Clipper
- 1 pair of clipping blades
- 1 special screwdriver
- 1 bottle of special lubricating oil
- 1 cleaning brush
- 1 case for transport and storage
- 1 operating instructions



NOTE!

- ▶ Check to ensure the completeness of the contents and that there is no damage. Please report incomplete package contents or any apparent damage immediately to your supplier/dealer.

5.2 Packaging

For the packaging, just non-polluting material is being used.



The return of the packaging saves raw materials and reduces the volume of waste. Dispose of packaging materials that are no longer needed in accordance with locally applicable regulations.

5.3 Storage

Store clipper and accessories on the following conditions:

- ▶ Do not store outdoor.
- ▶ Store dry and dust-free.
- ▶ Protect against solar irradiation.
- ▶ Avoid mechanical shocks.
- ▶ Storage temperature: 0 until 40°C.
- ▶ Relative humidity: max. 90%.

- ▶ When storing longer than 3 months, check periodically the general condition of all parts.
- ▶ When not using the clipper, store it in the case making sure it is well cleaned, lubricated and that the clipping elements are not spring loaded (risk of corrosion).

6 Operation

6.1 Requirements at the place of use

- ▶ Observe the manual (see chapter 3 Technical data).
- ▶ Power outlets in the outer area must be equipped with a residual current circuit breaker (FI).
- ▶ The work place must have adequate lighting.
- ▶ The electrical socket must be easily accessible so that the device can be quickly disconnected from the mains.
- ▶ The charger power cord must not be taut or kinked.
- ▶ Make sure there is adequate ventilation.

6.2 Adjusting the clipping pressure

Set the clipping pressure as follows before you start clipping:



Fig. 3

- ▶ Before beginning shearing when the machine is switched off, check to make sure that the tapered pins of the chicken feet exactly engage in the positioning holes of the upper blade.
- ▶ Turn the adjusting knob in the direction of the arrow until you feel resistance.
- ▶ Turn the knob another 1/4 turn in the direction of the arrow.
- ▶ If the clipping quality deteriorates, increase the clipping pressure by turning the adjusting knob another 1/4 turn in the direction of the arrow. If this does not produce the desired result, the blades must be replaced or sharpened.



CAUTION!

- ▶ The upper blade of the shearing head is only held by the tapered pins of the chicken feet. If the shear-pressure adjustment head is released too much, the upper blade can fly off and result in injuries.



NOTE!

- ▶ If the clipping pressure is too low, hair can gather between the clipping blades. This results in a poor clipping quality. In this case, clean the clipping blades as described in chapter 6.7.

6.3 Switching the clipper on and off



Fig. 4

- ▶ To switch the clipper on, slide the ON/OFF switch to the position I or II.
- ▶ To switch the clipper off, slide the ON/OFF switch to the position 0 (see Fig. 4).

6.4 Using the clipper

- ▶ Approach the animal from the front.
- ▶ Secure the animal to be clipped and calm it down.
- ▶ Plug the power plug into the socket.
- ▶ Switch the clipper on while you are in the visual range of the animal.
- ▶ Select the desired speed (level I or II).
- ▶ Observe the animal's behaviour while clipping.
- ▶ Switch the clipper off after you have finished clipping and pull the plug from the socket.

6.5 Replacing the clipping blades



Fig. 5

- ▶ Switch the clipper off by sliding the switch to the position 0.
- ▶ Pull the plug from the socket.
- ▶ Turn the adjusting knob in the direction of the arrow until the resistance decreases.
- ▶ Place the clipper with the comb plate screws facing upwards on a flat surface.

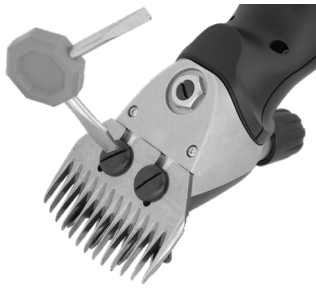


Fig. 6

- ▶ Release the comb plate screws and pull the comb plate from the shearing head.
- ▶ Remove the upper blade.

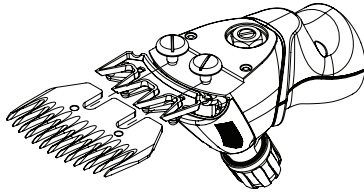


Fig. 7

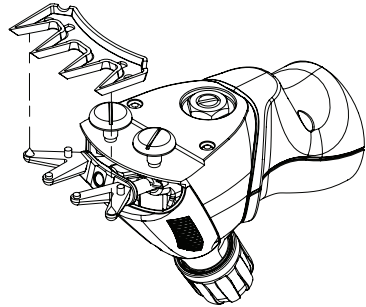


Fig. 8

- ▶ Place the new upper blade in the tapered pins of the chicken feet.
- ▶ Apply a few drops of oil on the polished surfaces of the upper blade.



Fig. 9



NOTE!

- ▶ Make sure the clipping blades are positioned correctly when installing the new or sharpened blades.
- ▶ The tapered pins of the chicken feet must engage exactly in the positioning holes of the upper blade.

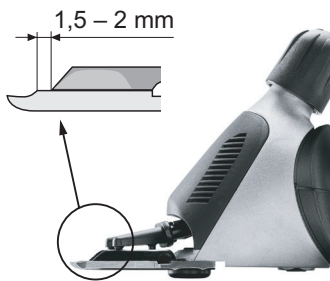


Fig. 10

- ▶ Install the new comb plate. Align it so that the ground surface of the comb plate protrudes by approx. 1.5 - 2 mm above the point of the upper blade.
- ▶ Tighten the comb plate screws.



NOTE!

- ▶ Only work with sharp blades, replace blunt or defective blades without teeth. The correct sharpening of blades is only to do by special machines or by a specialist. In that case, contact your service centre.

6.6 Lubrication



Fig. 11

To ensure a well-clipped animal and to increase the life of the clipper including the shearing head, it is necessary to apply a thin coat of oil between the upper blade and comb plate. All other moving parts of the clipping head must also be lubricated.

- ▶ Apply some drops of oil on to the clipping blades and into the lubrication opening.



CAUTION!

POSSIBLE DAMAGE TO THE CLIPPER!

Insufficient oiling of the clipping head will lead to warming and will shorten the life of the clippers and its blades.

- ▶ Oil the clipping blades adequately during the clipping session, at least once every 15 minutes, so that they do not run dry.
- ▶ Only use the special oil supplied or a paraffin oil conforming to the ISO VG 15 specification.



NOTE!

- ▶ The provided oil is non-toxic and produces no irritation on contact with the skin or the mucous membranes. This paraffin oil degrades to some 20% after 21 days (CEL-L-33-T-82).

- ▶ Oil the blades prior to, during and after every use.
- ▶ Oil the blades no later than when the blades leave streaks or slow down.
- ▶ Apply several drops of oil on the front and on the sides of the clipping blades (see Fig. 11).
- ▶ Wipe excess oil off with a soft, dry cloth.
- ▶ Lubrication sprays do not have sufficient oil for a good lubrication, but serve for cooling the blades.
- ▶ Immediately replace damaged or notched blades in order to avoid injuries.

6.7 Cleaning



CAUTION!

IMPROPER CLEANING. RISK OF DAMAGING THE CLIPPER!

- ▶ Clean the clipper only with a dry cloth and with the brush supplied. To clean the air filter, use exclusively a dry brush or a nailbrush.
- ▶ Never use compressed air for cleaning the clipper.

Housing of the clipper

- ▶ Clean the housing of the clipper with a dry cloth.

Shearing blade and shearing head

- ▶ Use the brush supplied to clean the shearing blade and the shearing head.
- ▶ Lubricate the clipping blades as described in chapter 6.6.

Air filter



- ▶ Remove the air filter from the clipper.
- ▶ Clean the air filter with a dry brush or a nailbrush. Make sure no foreign objects get into the device while cleaning it.
- ▶ Slide the air filter back onto the clipper.

Fig. 12



CAUTION!

POSSIBLE DAMAGE TO THE CLIPPER!

- Operating the clipper without the air filter can damage the clipper.
- ▶ Only use the clipper with a properly fitted air filter.

7 Troubleshooting

7.1 Safety instructions



DANGER!

DANGER OF FATAL ELECTRIC SHOCK!

Fatal electric shocks can result from contact with electrically live conductors or components!

- ▶ Switch the equipment off before troubleshooting the problem.
- ▶ Repairs to electrical devices must only be carried out by the factory service department or specialists who have been trained by the manufacturer.

During the warranty period the device must be opened only by personnel authorised by the manufacturer, otherwise the warranty will be void.

7.2 Causes of malfunctions and their rectification

Malfunction	Cause	Rectification
The upper blade does not move across the full bearing surface.	Retaining spring broken.	Notify customer service.
	Eccentric shaft and/or ball and swivelling fork are worn (insufficient lubrication).	
	Bearings are heavily worn.	
Top blade does not move.	Defective gear wheel.	Notify customer service.
	Eccentric shaft is broken or bent.	
	Ball is missing.	
Shearing pressure adjustment knob is jammed.	Thread dirty or rusty.	Notify customer service.
	Circlip is jammed.	
Shearing pressure adjustment knob automatically releases.	Circlip missing.	Notify customer service.
	Threaded insert is loose.	
Not enough pressure can be applied to the upper blade.	Retaining spring broken.	Notify customer service.
	Sliding sleeve is missing.	
	Sliding sleeve is worn.	
	Swivelling fork is worn.	
Chicken feet fall out.	Chicken feet are worn.	Notify customer service.
	Securing cams on the retaining spring are broken.	

Malfunction	Cause	Rectification
Motor runs very slowly.	Clipper blades were not oiled sufficiently.	Lubricate the clipping blades.
	Motor and/or electronics defective.	Notify customer service.
Motor does not run or stops immediately.	Clipping pressure too strong.	Reduce the clipping pressure, as described in chapter 6.2. Have the blades sharpened.
	Smell of burning from the motor housing. Motor burned out.	Notify customer service.
	Motor and/or electronics defective.	
	Motor turns off due to overload.	Turn off the device, allow it to cool down and then turn it on again. Notify customer service if the device is not working properly.
No speed difference between level I and level II.	Motor and/or electronics defective.	Notify customer service.
	Magnet missing.	
Clipper cuts badly or not at all.	Clipper blades blunt.	Notify customer service.
	Clipper blades have not been correctly ground.	
	Clipping pressure too low.	Increase the clipping pressure, as described in chapter 6.2.
	Shearing blade is incorrectly installed and/or aligned.	Correctly install the shearing blade, as described in chapter 6.5. Align the clipping blades correctly, see Fig. 10.
	The animal's hair is wet.	Only clip dry hair.
	Hairs stuck between upper and lower blade.	Remove the clipping blades; clean, lubricate and install them again; set the clipping pressure.
Motor unit becomes hot.	Air filter clogged.	Clean or replace the air filter.
	Clipping pressure too high.	Reduce the clipping pressure.
	Bearing faulty.	Notify customer service.

8 Spare parts

See spare parts list at the end of these operating instructions.



CAUTION!

FAULTY SPARE PARTS MAY CAUSE DAMAGES, MALFUNCTIONS OR TOTAL LOSS AND MAY REDUCE SECURITY.

- ▶ Use only original spare parts from the manufacturer. Obtain spare parts from an authorised dealer or directly from the manufacturer.



NOTE!

- ▶ If non-approved parts are used, all warranty, service, compensation and liability claims against the manufacturer or its employees, dealers and representatives will be forfeited.

During the warranty period the device must be opened only by personnel authorised by the manufacturer, otherwise the warranty will be void.

Pos. No.	Description	Quantity
	Clipper	
1	Sheep clipping head, complete	1
2	Adjusting knob, sheep	1
3	Sheep shearing head cover	1
4	Retaining spring	1
5	Swivelling fork	1
6	Gauge plate	1
7	Chicken feet, right	1
8	Chicken feet, left	1
9	Countersunk screw M4 x 8	2
10	Ball	1
11	Eccentric shaft sheep	1
12	Ball bearing 608-2RS	1
13	Comb plate screw, sheep	2
14	Locknut	1
15	Centre post	1
16	Sheep shearing head case	1
17	Ball bearing 608-2Z	1
18	Gear wheel Z22, sheep	1
19	Lock washer	1
20	Threaded insert	1
21	Circlip	1

Pos. No.	Description	Quantity
22	Sliding sleeve	1
30	Air filter	1
31	Switch lever	1
32	Upper housing cover	1
33	Catch spring for switch with magnet	1
34	Motor complete	1
35	Front bearing flange	1
36	Stator	1
37	Ball bearing 8-19-6	2
38	Lock washer	1
39	Rotor incl. ball-bearing	1
40	Play compensation disc 626	1
41	Bearing flange, rear, with carbon brush springs	1
42	Carbon brush spring	2
43	PH-screw M4 x 10	1
44	Impeller	1
45	Carbon brush	2
46	Motor bracket	4
47	Lower housing cover	1
48	Cable grip	1
49	Anti-kink sleeve	1
50	PCB	1
51	Contact wire	1
52	PT-screw KA30 x 16	13
53	Cable	1

9 Disposal



CAUTION!

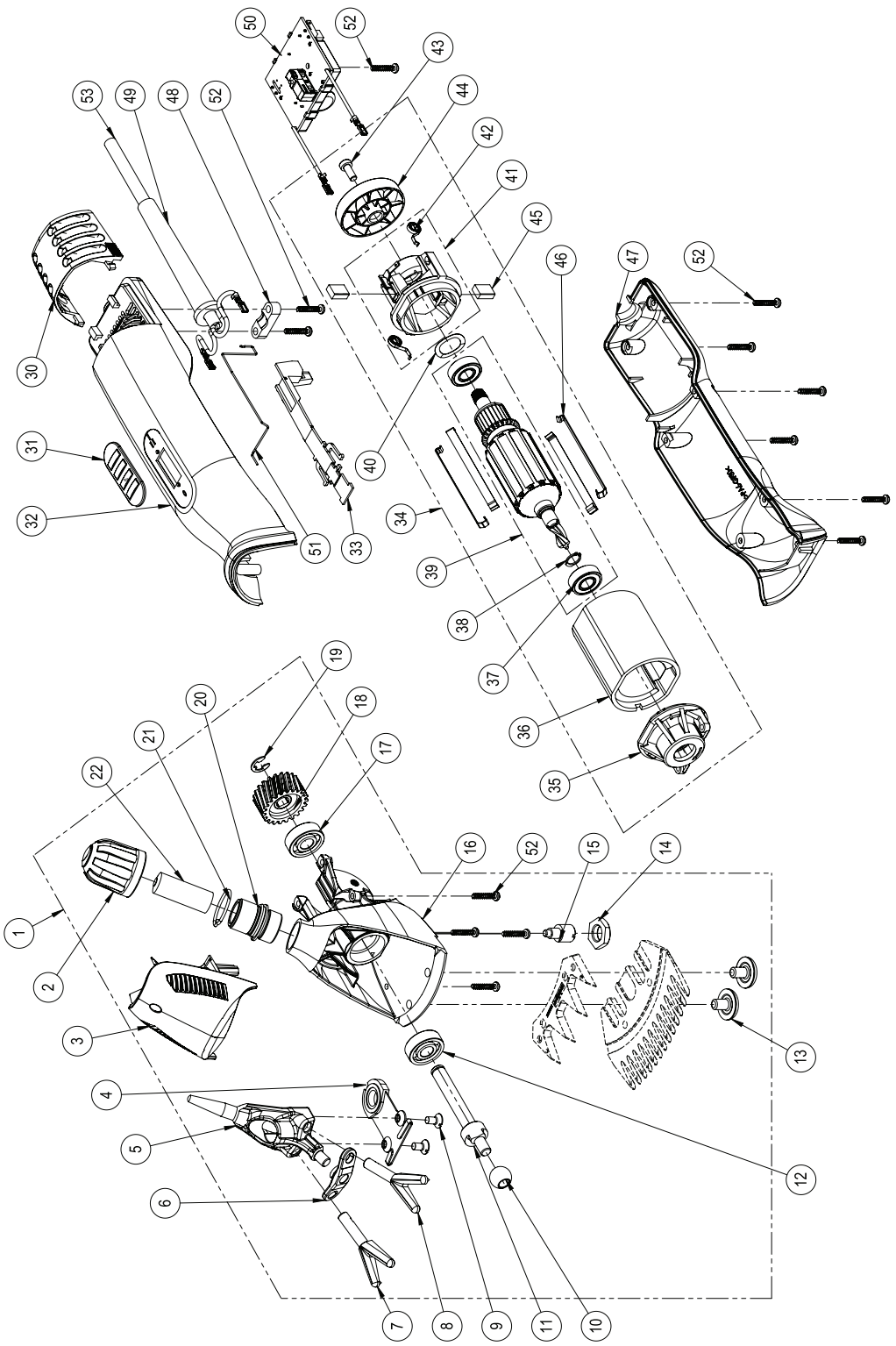
Environmental damages when disposing incorrectly!

- ▶ Electrical waste, lubricants and other consumable materials are subject to special regulations regarding disposal. They can only be disposed of only through qualified specialists!



NOTE!

- ▶ Dispose of the clipper at a service centre or nearby electrical workshop.



Garantia

Artikel Item Article Articolo Artículo Artikel	Artikel Artikel Artikkel Tuote Artigo Προϊόν	
---	---	--

Garantie

Seriennummer Serial no. Numéro de série Numero di serie Número de serie Seriennummer	Seriennummer Seriennummer Seriennummer Sarjanumero Número de série Αριθμός σειράς	
---	--	--

Kaufdatum Date of purchase Date d'achat Data di acquisto Fecha de compra Aankoopdatum	Købsdato Inköpsdatum Kjøpsdato Ostopäivä Data da compra Ημερομηνία αγοράς	
--	--	--

Warranty

Stempel und Unterschrift Stamp and signature Tampon et signature Timbro e firma Sello y firma Stempel en handtekening Stempel og underskrift Stämpel och underskrift Stempel og underskrift Leima ja allekirjoitus Carimbo e assinatura Σφραγίδα και υπογραφή	
--	--

In case of claim, please return your machine with the instruction manual and the warranty card directly to your local distributor. Please do not cut off the warranty card from the instruction manual.

© 2019 Heiniger AG. All rights reserved.

This instruction manual may not be duplicated or distributed, neither completely nor in extracts, or by electronic or mechanical means (including photocopying), transmitted or used for the purpose of competition without authorisation from Heiniger AG.

Subject to change without notice.

Contact:

Heiniger AG | Industrieweg 8 | CH - 3360 Herzogenbuchsee |

Switzerland

Tel. +41 (0)62 956 92 00 | marketing(at)heiniger.com

