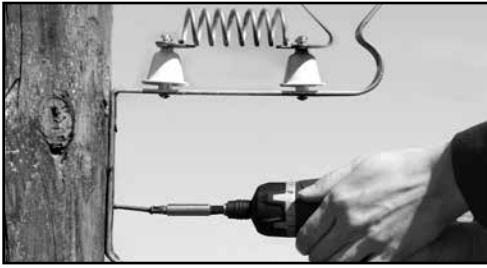


# Galvanized Lightning Choke/Diverter Instructions

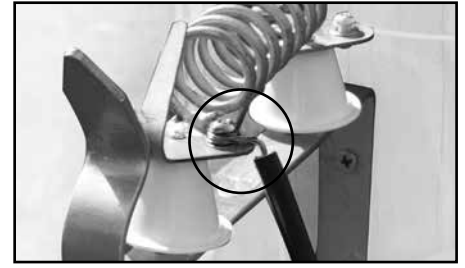
#156310



1. Using the two holes in the steel diverter plate—screw, nail or wire the diverter to a wood or steel post.



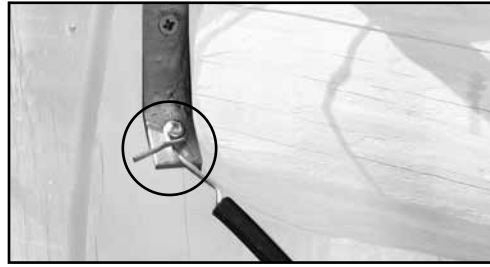
2. Attach an insulated lead wire from the energizer to either of the screws closest to the post.



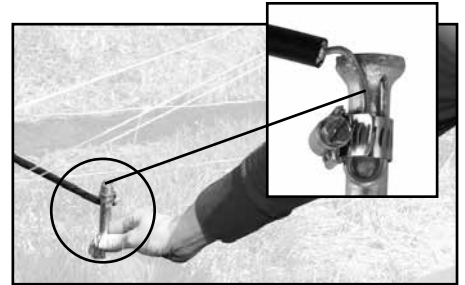
3. At the other end of the spring, connect an insulated wire using the provided screws.



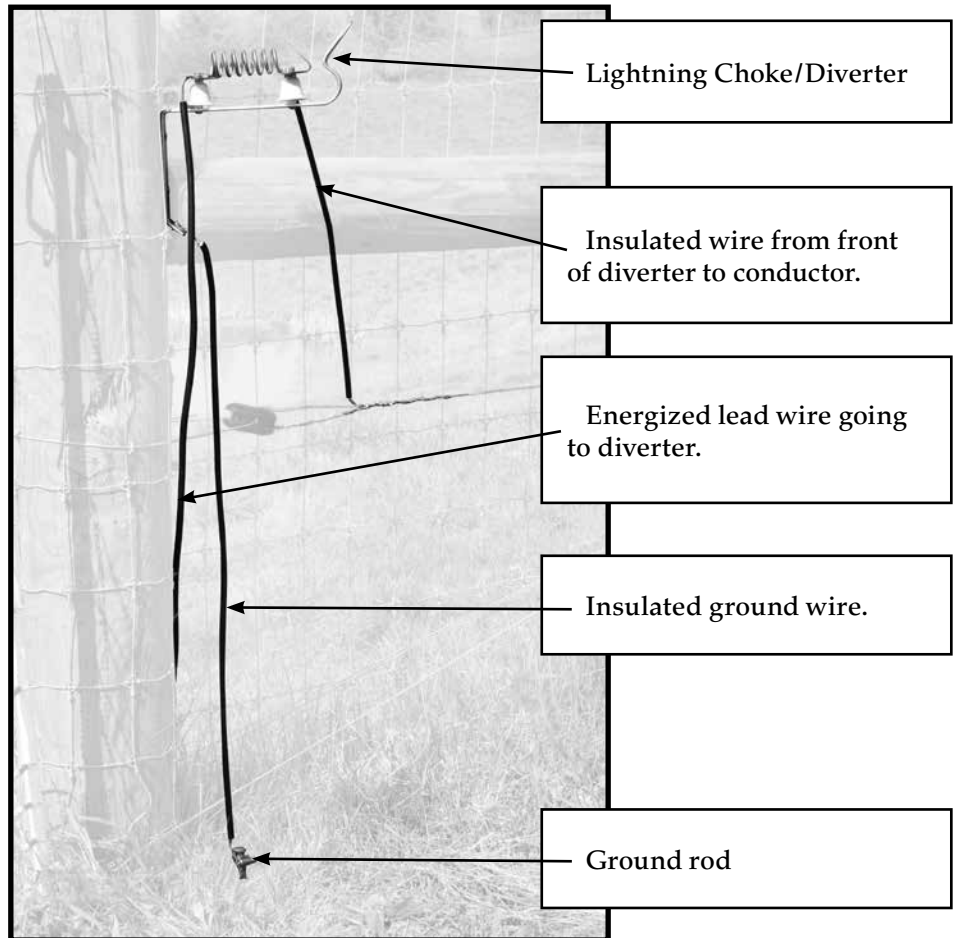
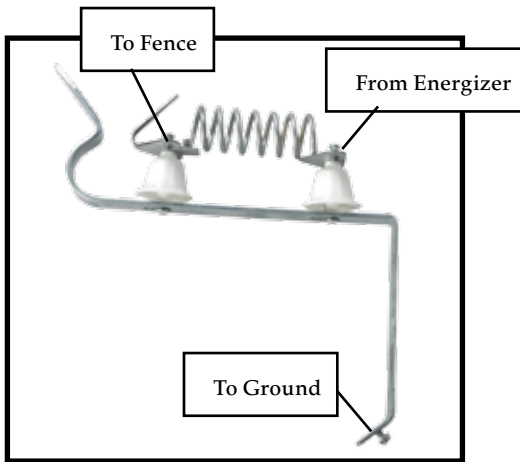
4. Connect the end of the insulated wire (from step 3) to the portion of the fence that is to be energized. Conductor line to be protected.



5. Attach an insulated wire to the bottom of the diverter.



6. Attach ground wire (from step 5) to a ground rod (shown above), grounded fence wire or steel T post. Do not use the energizer's ground system.



www.premier1supplies.com  
800-282-6631

© Copyright 2016, Premier1Supplies.  
All rights reserved.