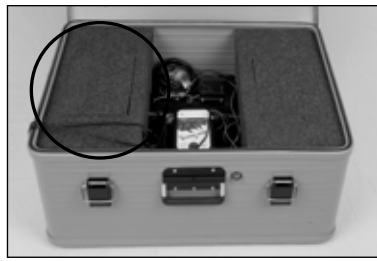


PRS 200 Instructions



800-282-6631

www.premier1supplies.com



1. Looking at the inside of the PRS unit as in the picture, remove the left foam battery cover and set aside.



2. Lift the battery out of the foam pocket and set on the energizer case (as shown).

In the left pocket are 3 wires, 2 are red "+" and one is black "-".



3. Unscrew the bolt of the red "+" battery terminal. Remove red tape from red "+" wires. Placement of bolt and wires as follows: bolt, washer, terminal, red wires, lock washer, nut (as shown). Tighten until wires are firmly held.



4. Remove electrical tape from negative terminal. Unscrew the bolt of the black "-" battery terminal. Placement of bolt and wires as follows: bolt, washer, terminal, black wire, lock washer, nut (as shown). Tighten until wires are firmly held.



5. Place battery back into the foam pocket. The wires should be on top of the battery.

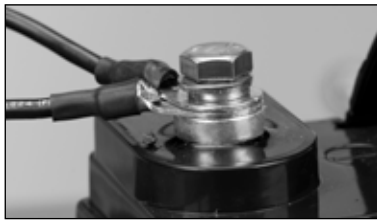


7. Lift the right battery out of the foam pocket and set on the energizer case. In the right pocket are 3 wires, 1 is red "+" and 2 are black "-".

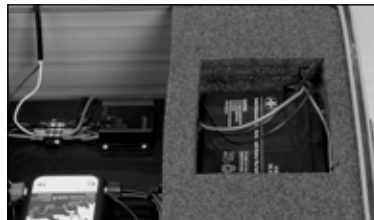
6. Insert foam lid.



8. Unscrew the bolt from the red "+" terminal of the battery. Remove red tape from red "+" wire and bolt to the terminal, use same method as step 3.



9. Unscrew the bolt from the "-" terminal and bolt in black "-" wires. Place battery back into the foam pocket.



Do not set battery on the wires, the wires should be on top of the battery.

10. Insert foam lid.



11. Do not shut black and red fence leads in the case.



Close and secure energizer lid.

Connecting the PRS



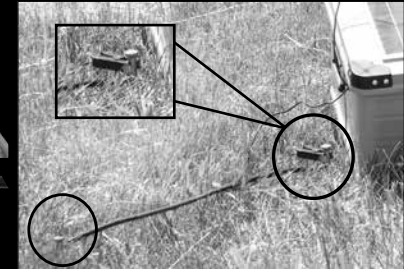
Two 3 ft Ground Rods

Two Ground Rod Clamps



5 ft MaxiShock Insulated Wire

1. Place Clamp on the neck of the ground rod. (Do this for both rods.)



2. Strip 6" of insulation off each end of the MaxiShock.



3. Make a loop with the bare wire (as shown above).

4. Insert wire between the clamp and the ground rod.



5. Tighten the clamp so it firmly holds the wire to the rod. Repeat for the 2nd ground rod.



6. Insert 1 ground rod next to the energizer. Extend 2nd rod as far as the cable will allow and insert into the ground.

7. Connect black clip to the first ground rod (as shown above).

8. Attach red clip to the portion of the fence that is to be energized.



9. Turn on the energizer (on/off switch between the latches on the energizer).