

Operating Instructions

Power Parer

Air Operated Shears



Designed and Manufactured in Australia by:
Jasdane Engineering Pty Ltd
5, 8-12 Pascal Road
Seaford Vic 3198
Australia
+61 3 9782 4995
www.jasdane.com.au

Operating Instructions

The shears are held in the palm of the hand, with the first and second fingers operating the trigger. The blades will follow the finger movement implicitly: if the trigger is pressed - blades will close, if fingers stop - blades will stop, if fingers open - blades with open.

It must be realised that the amount of pressure on the trigger in no way assists the cutting action, only light pressure is needed.

If the blades stop in the cut then the cut is too heavy and pressure on the trigger should be released and a smaller cut started.

This will only happen if hooves are very hard, blades are blunt, or air pressure is too low.

The blades return to open position when the trigger is released.

Maintenance

Lubricate the shears every four hours and keep blades sharp.

The filter bush (PPR 2202) contains a sponge pad to hold a small quantity of oil and prevent the entry of dirt via the air supply.

The filter bush should be unscrewed and the filter (PPR2401) washed thoroughly in petrol (or replaced) at least every three months.

To Lubricate Internally

Turn off the air supply, relieve air pressure inside tool by pressing the trigger, undo air hose nut (PPR3601), pull out the air hose nipple and place 8 to 10 drops of light oil into the filter/bush every four hours of operation. This will lubricate all of the internal parts. In addition, the other parts to be oiled are the centre pivot, the two actuating pivot point, the roll pins in the trigger and linkage. These are all to be oiled at four hourly intervals.

Specifications:

Air supply	70-100 PSI
Air usage	approx. $\frac{1}{2}$ ft ³ /min

Recommend:

Use Air filter/Regulator/Lubricator in the air supply line.

Internal corrosion

All compressors deliver a lot of water vapour along with the air; the tank and the air cleaner should be drained frequently. Some of this water vapour will condense inside the tool, so when the tool is to be stored for a longish period it is very important that the internal parts be covered with anti-rust and oil.

Before storing the shears, remove air hose and place 20 or 30 drops of oil/anti-rust (or straight anti-rust) into the filter/bush and operate the tool twenty or so times so parts are left with protective coating. This will help prevent expensive replacements. In 'salty' areas this care is essential.

Air Hose

The tool is fitted with a very light weight PVC hose, with a limited life but low replacement cost. This is done for convenience, not cheapness. Every farmer asked has preferred the flexibility and lightness of this hose to the more usual heavy braided hose. It is perhaps advisable to keep a spare hose (PPR3304) on hand. To renew the hose, hold air hose nipple and screw off hose with its long hose nut. When screwing on the new hose, complete with its long nuts. The hose is also available in longer lengths if required; up to 10 metres is maximum recommended.

Blade sharpening will be necessary from time to time. The blades are made from high quality alloy blade steel carefully hardened and tempered to an accurately controlled hardness to ensure optimum performance. The cutting edges should not be allowed to become so blunt that much grinding is necessary to reproduce a keen cutting edge. Sharpen a little, but frequently. To re-sharpen, the blades must be removed from the tool. To do this remove the centre pivot bolt and nut and also the two actuating pivot bolts and nuts. Note that each actuating pivot bolt passes through two operating links and a hexagon headed eccentric bush (PPR1401). The hexagon headed eccentric bush has a round portion which passes through a hole in the rear of the blade to which it is fitted.

After removal, the blades may be re-sharpened on an oil stone on the beveled face. After sharpening to a keen smooth edge, each blade should have the 'feather edge' removed by one light stroke on the oil stone held so that the stone is at right angles to the flat surface of the blade, a slightly 'dull' edge will not be notched by gravel etc. in the hoof as will a very keen knife edge.

After sharpening, the blades should be replaced in the tool. Assemble the three pivot points. Adjust the two hexagon headed eccentric bushes of the actuating pivots by rotating so that the blades close and overlap approximately 2mm at their tips when fully closed and then tighten these pivots firmly. Tighten the central pivot point until the blades bind and then slacken slowly until they are just free. This adjustment is critical and must be carefully carried out if the blades are to cut correctly. If the central pivot is too loose the blades can separate, especially near their tips, and material will wedge between them instead of being cut, thus spoiling the efficiency of the unit. After assembly, oil the three pivot points.

Spare blades and parts are readily available.

One tool consumes approximately $\frac{1}{2}$ a cubic foot of air per minute.

Warning:

Do not exceed 100 PSI air pressure.

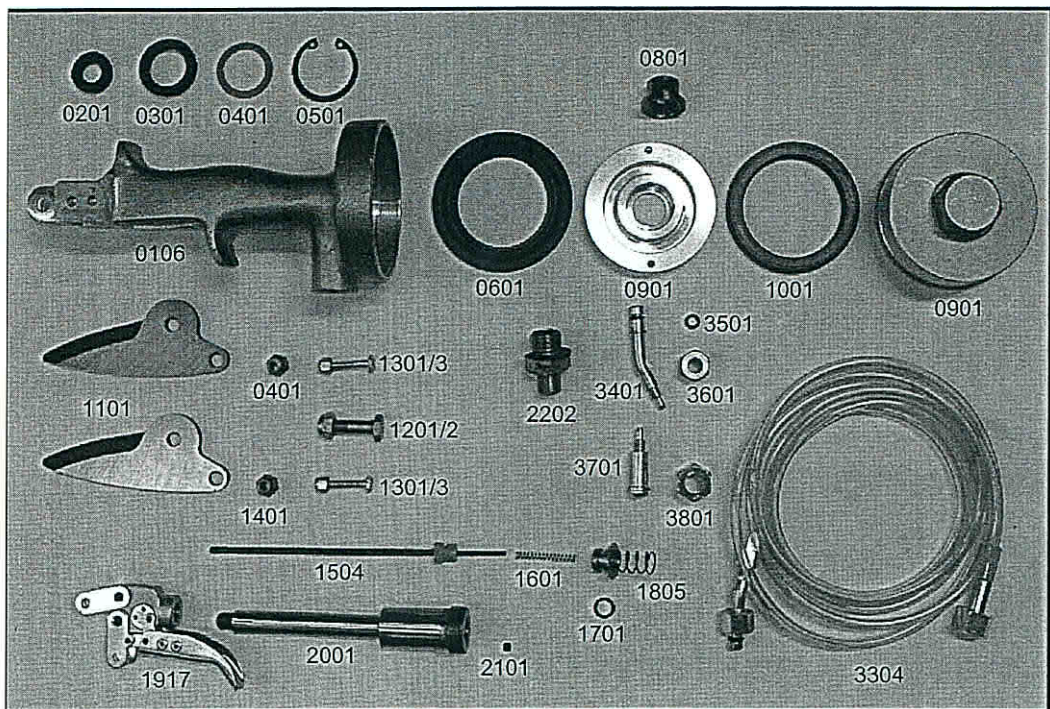
This tool should not be operated by minors or anyone affected by drugs, alcohol or medication.



POWER PARER

Air Powered Sheep Hoof Paring Shears

Replacement Parts List



When ordering replacement parts, firstly identify the part in the illustration above, and then refer to it by its part number. Replacement parts should then be ordered from the dealer that supplied the tool or from: Leader Products Pty Ltd www.leaderproducts.com.au.

Victoria	465 Hume Highway, Craigieburn 3064 (PO Box 42 Craigieburn 3064)	03 9308 2355
New South Wales	Unit 5, 57 Douglas Mawson Rd, Dubbo 2830 (PO Box W139 Dubbo 2834)	02 6882 7995 1800 025 371
Queensland	Unit 2, 24 Carroll St, Toowoomba 4350 (PO Box 9083 Wilsonton 4350)	07 4633 1662
South Australia	Unit 3, Simper Crescent, Mt Barker 5251	08 8391 2011
West Australia	82 Robinson Ave, Belmont 6104	08 9277 5150 1800 199 127
New Zealand	Unit 1, 42 Ellice Rd, Glenfield, Auckland	09 444 6180

Replacement Parts List – Power Parer

Part No. PPR	Description
0106	Body assembly with bronze bush
0201	Seal - small
0301	Seal - medium
0401	Steel washer
0501	Circlip washer
0801	Valve cap
0601	Buffer washer
0701	Piston with grub screw
1001	Seal - large
0901	Cylinder
1101	Blades (2 per tool)
1401	Eccentric bush (2 per tool)
1301/3	Bolt and locknut for eccentric bush (2 per tool)
1201/2	Bolt and locknut for blade pivot
1504	Exhaust valve rod with nylon valve
1601	Exhaust valve spring
1701	Exhaust valve seat 'O' ring
1805	Exhaust valve seat and spring
1917	Toggle/trigger assembly
2001	Piston rod
2101	Inlet valve ball
2202	Filter bush assembly complete
2201*	Filter bush
2402*	Filter mesh inserts (2 per tool)
2401*	Filter foam
2501*	Filter retainer circlip
2301*	Fibre washer
3304	Air hose assembly complete
3401	Air hose nipple, tool end
3501	Air hose nipple 'O' ring
3601	Air hose nipple nut, tool end
3701	Air hose nipple supply end
3801	Air hose nipple nut, supply end, for 1/4" B.S.P.
3301*	Air hose 1.5 metres long
3302*	Air hose nut (2 per tool)

* These items are not shown individually in the photograph.