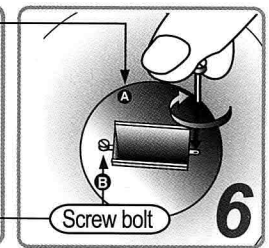
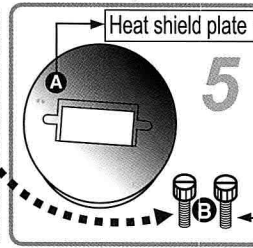
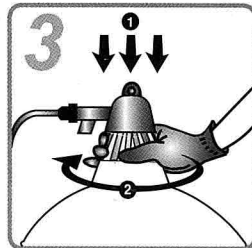
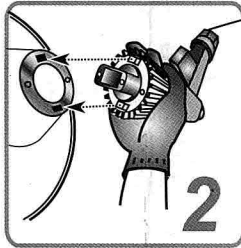
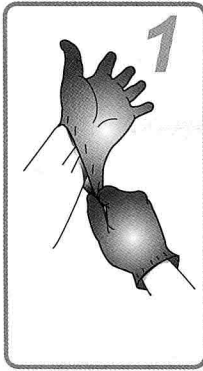
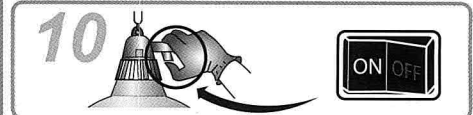
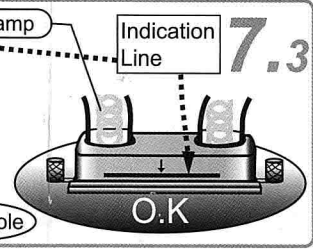
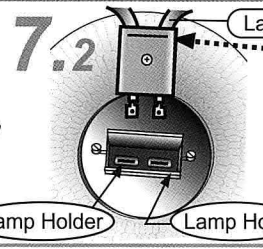
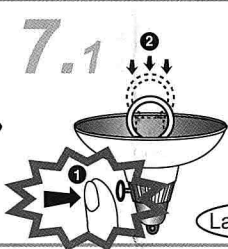
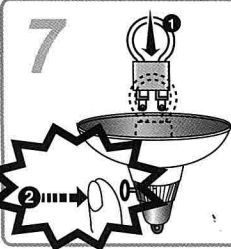
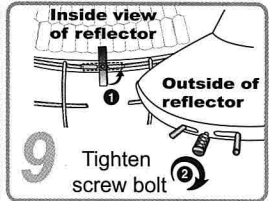
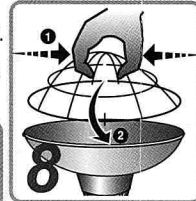


HOW TO ASSEMBLE



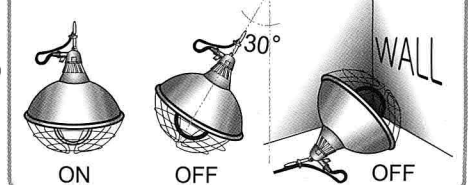
- 1 Hold the grey cooling fin steady and close to the yellow aluminum shade. Do not hold the red plastic cap.
 - 2 Spin the cooling fin slightly until you hear the click. Do not use too much strength when spinning the cooling fin.
- * Assembly may not be done easily if the connecting part of the aluminum shade is a little bit bent or not flat. Please check before assembly. If you find such a problem, please contact the seller.



- 1 Put the carbon fiber lamp into the holes at the heater base.
 - 2 Press the release button on the cooling fin
- * After pressing the button the carbon fiber lamp and lamp holder are to be fitted together. (see fig 7.3)
- * If the lamp and lamp holder aren't plug in, keep the button pressed and push the lamp to the end of the holes gently. When replacing the lamp, use only the lamp of the specified standard indicated on the heater.

- * When pressing the button, please confirm the indicator line on the carbon fiber lamp is at the edge of the lamp hole.
- * When taking the carbon fiber lamp out, please Pull pilfer the lamp while pressing the button.
- Caution: Plugging in or taking out the lamp without pressing the button may cause breakdown.
- In this case, we do not offer free maintenance or replacement.

For Safety at Abnormal Position!



SAFETY PRECAUTIONS

To protect against fire, electric shock and other dangers, please follow the safety regulations below:

- * Please read the safety precautions carefully before using the appliance.
 - * This is a heat-radiating appliance for animal breeding.
 - * Please do not use this appliance for other than intended use.
 - * The appliance shall be securely fixed in position.
 - * Install the appliance per this manual and connected it to a certified junction box or plug into a properly grounded outlets in a branch circuit which have an independent power switch; turn off the independent power switch of the branch circuit, wait the appliance cool down before turn off the switch of the appliance to avoid injury.
 - * The safety guards shall not be removed.
 - * The minimum distance between the lamp and the animals or inflammable materials is 1.5m.
 - * To protect against electric shock, do not place cord, plug or appliance in water or other liquid.
 - * When not in use or before cleaning, unplug from outlet. For your safety, turn off the switch and wait until the unit cools down before uninstalling or cleaning.
 - * Do not operate any appliance with a damaged cord/plug or after the appliance has been damaged in any other manner.
 - Return the appliance to InterHeat Inc. for examination, repair or adjustment.
- * Do not touch the hot surface.
 - * Indoor use only.
 - * Any use of accessory attachments not recommended by InterHeat Inc. may result in fire, electric shock or personal injury.
 - * Do not let cord hang over an edge of an object or touch hot surface.
 - * Keep away from hot gas, induction cooker and heated oven.
 - * The heating parts and cooling fins should be kept clean from dust and dirt.
 - * To provide continued protection against risk of electric shock, connect to properly grounded outlets only (apply to cord connected only).
- Please keep this instruction manual. Special maintenance other than cleaning is needed. Installation should be carried out by electrician. Please send the appliance back to InterHeat Inc. for after-sale service. Please do not repair the appliance by yourself.



2015. 7. 1.
President/CEO

이영호
interheat@interheat.com

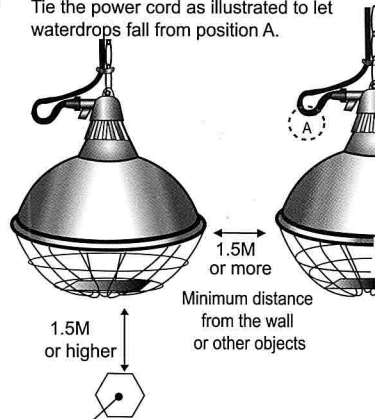
Technical Specifications

- * Voltage: 120V
 - * Frequency: 50/60Hz
 - * Length of Power Cord: 0.5m or 2.5m with plug
 - * Dim. of reflector : 40cm(CPBT series) or 30cm(CPT series)
- MODELS :
- 600W : CPT50-CFL600, CPT300-CFL600
CPBT50-CFL600, CPBT300-CFL600
CPT300S-CFL600, CPBT300S-CFL600
- 900W : CPT50-CFL900, CPT300-CFL900
CPBT50-CFL900, CPBT300-CFL900
CPT300S-CFL900, CPBT300S-CFL900
- 1200W : CPBT300-CFL1200, CPBT50-CFL1200
- 1500W : CPBT300-CFL1500, CPBT50-CFL1500

INSTALLATION

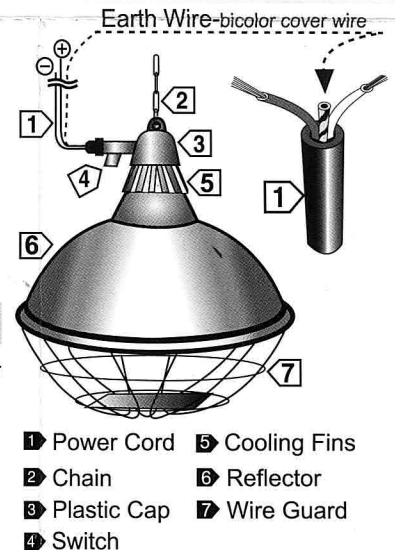
Keep the power cord away from the reflector after installation, power cord shall not touch the reflector.

Tie the power cord as illustrated to let waterdrops fall from position A.



Animals or Inflammable Material

COMPONENTS



INTERHEAT INC.
9-7, Hwangsaetul-ro 200 beon-gil,
Bundang, Seongnam, Gyeonggi-do
463-855 KOREA
TEL : +82 - 70 - 7500 - 1201
FAX : +82 - 70 - 7500 - 1204
interheat@interheat.com

INTERHEAT CHINA INC.
98 Xinghua Road, Jintan District,
Changzhou, Jiangsu, 213200 CHINA