



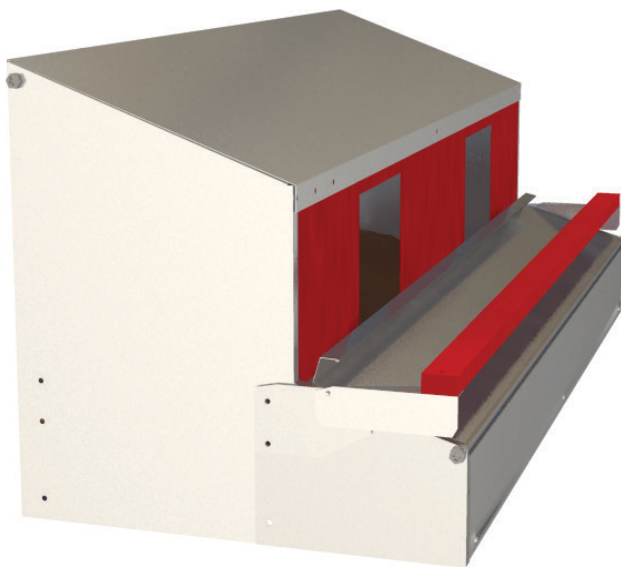
# HEN GEAR

HenGear.com

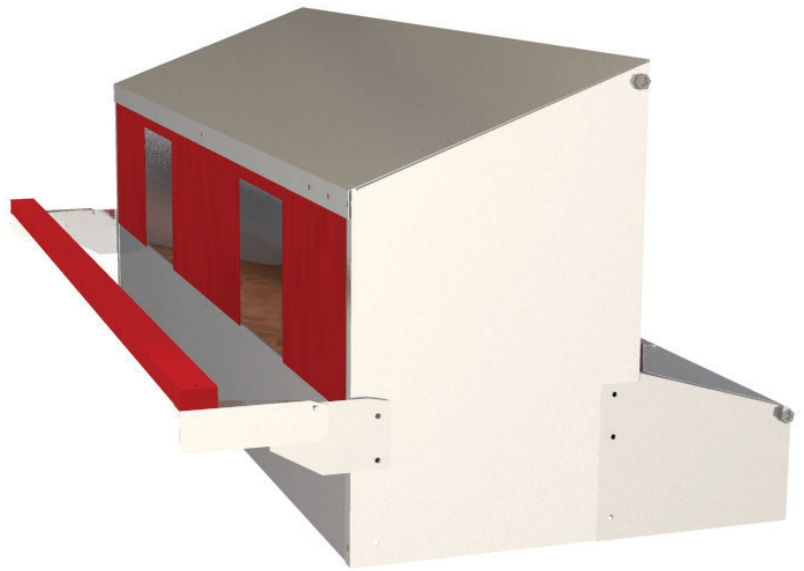
## Reversible Rollout Nest Box

### Assembly Instructions

SMALL | MEDIUM | LARGE | X-LARGE



**Front Rollout**



**Rear Rollout**

# Table of Contents

---

Parts List .....	3
Egg Collection Tray Assembly .....	4
Front Rollout Nest Box Assembly .....	5
Back Rollout Nest Box Assembly .....	12
X-Large Nest Box Reinforcement .....	18
Predator Locks Assembly .....	19
Frequently Asked Questions.....	<b>Back Cover</b>

## Tools Required

---

- 2 – 9/16 wrenches
- 1 – 7/16 wrench
- 1 – 3/8 wrench
- 1 – Phillips head screwdriver

**NOTE:** Finger tighten all 3/16 bolts until assembly is complete. This will ensure all holes are properly aligned.

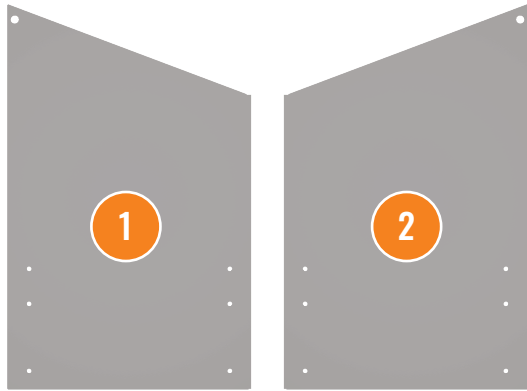
### **Bolts**

- 4 – 3/8” bolts
- 2 – 1/4” bolts
- 32 – 3/16” bolts

### **100% Customer Satisfaction Guaranteed.**

If you are having issues with assembly or have any questions, please contact us and we'll be happy to help.

# Parts List



Nest Sides



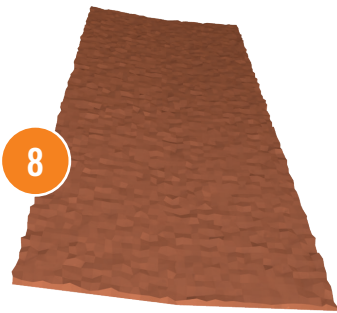
Tray Sides



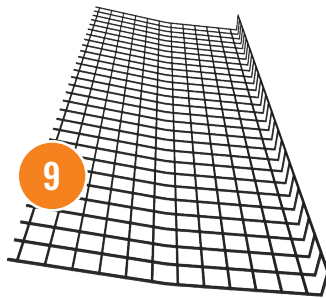
Roost Brackets



Lid



Pad



Panel

**NOTE:** Due to the manufacturing process, the panel netting may not initially lay flat. This will resolve itself after a month of use.



Lower Back



Lower C-Channel



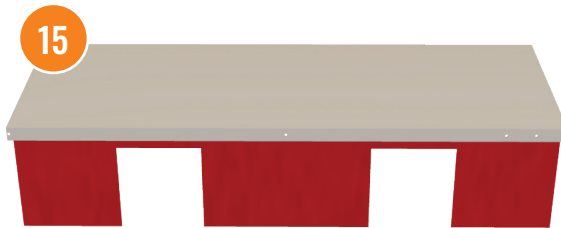
Tray Front



Upper C-Channel



Roost Bar



15



Small Spacer



Large Spacer

**(L & XL Models ONLY)**



Hinged Back



Hangers



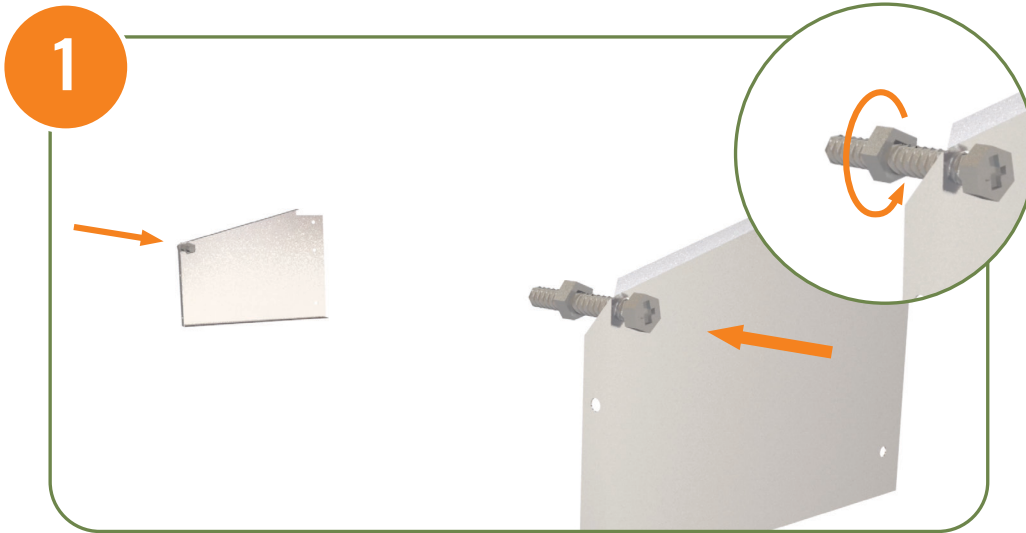
Predator Locks

**(For Rear Rollout ONLY)**

- 2x – Sm
- 3x – Med & Lg
- 4x – X-Lg

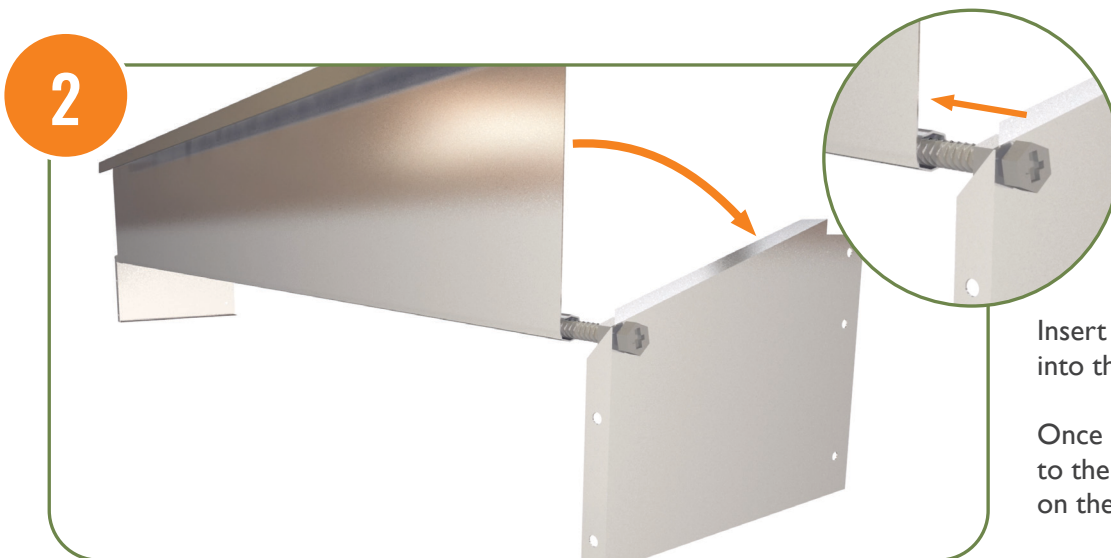
# Egg Collection Tray Assembly Instructions

Egg Collection Tray assembly is the same for both Front and Rear Rollout Nesting Boxes.



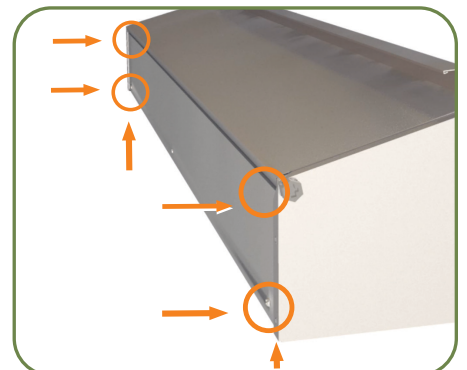
Insert two 3/8" bolts through the corner holes of each Tray Side (3&4) and secure by tightening nuts using two 9/16 wrenches.

**NOTE:** Finger tighten all 3/16 bolts until assembly is complete. This will ensure all holes are properly aligned.



Insert the Tray Side 3/8" bolts (3&4) into the tube ends of the Lid (7).

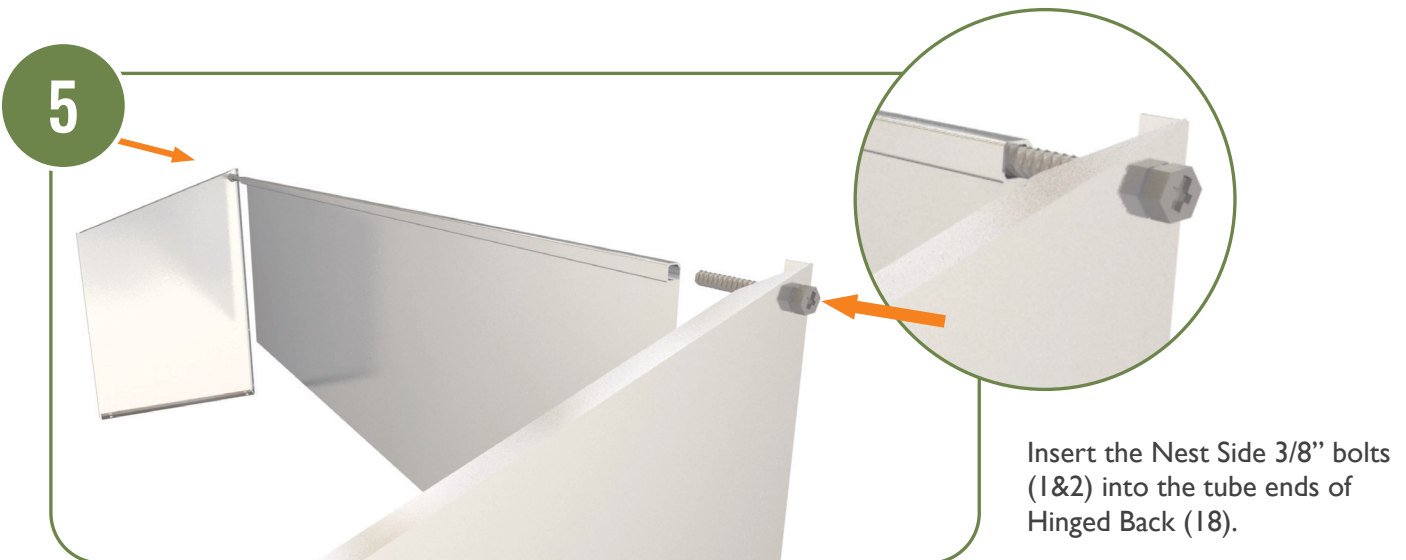
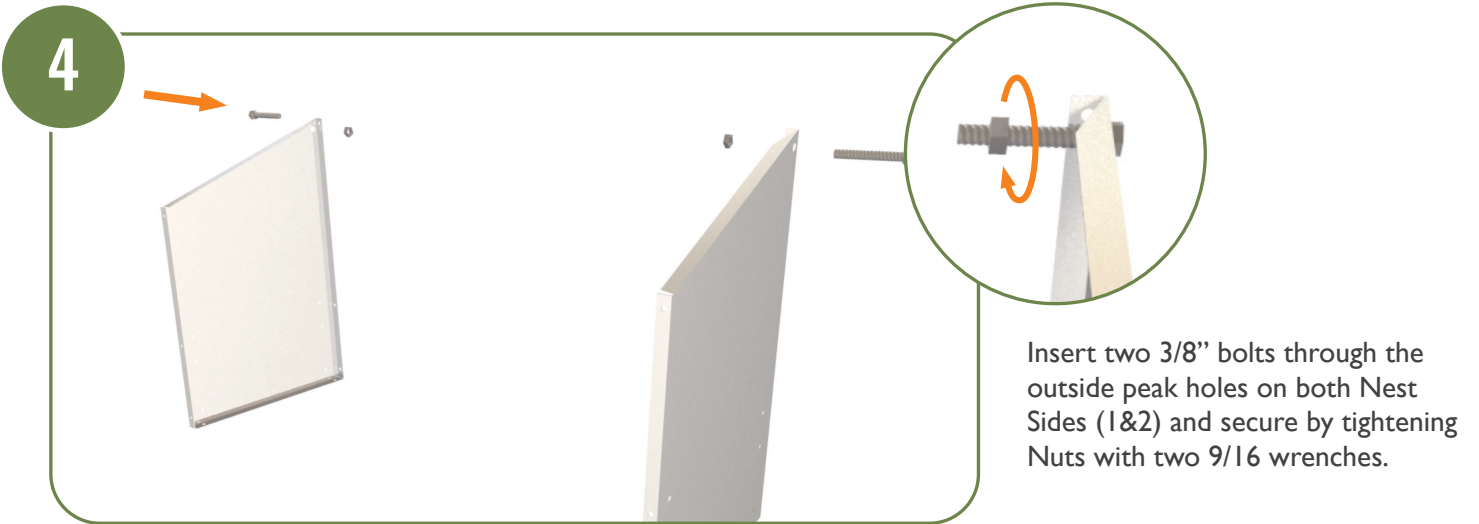
Once both Tray Sides are attached to the Lid, lay the Lid back to rest on the Tray Sides.



From the back side, insert Tray Front (12) and slide all the way forward to the front edges of the Tray Sides (3&4). Using six 3/16" bolts and a 3/8 wrench & screwdriver, attached the Tray Front to the Tray Sides.

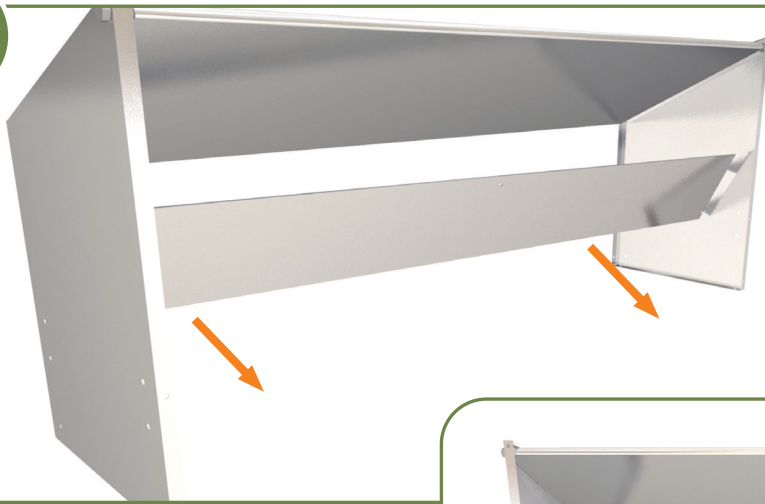
# Front Rollout Nest Box Assembly Instructions

Skip to page 12 (Step 17) for **Rear Rollout Nesting Box** assembly instructions.



# Front Rollout Nest Box Assembly Instructions

6



From the back side, insert the Lower Back Panel (10) and attach to the inside corner holes of both Nest Sides (1&2).

Use a 3/8 wrench and screwdriver to secure the six 3/16" bolts and nuts.

**NOTE:** When inserting the Lower Back Panel between the Nest Sides, push the Hinged Back Panel forward and slightly pull Nest Sides outward to allow for easier insertion of the Lower Back Panel.



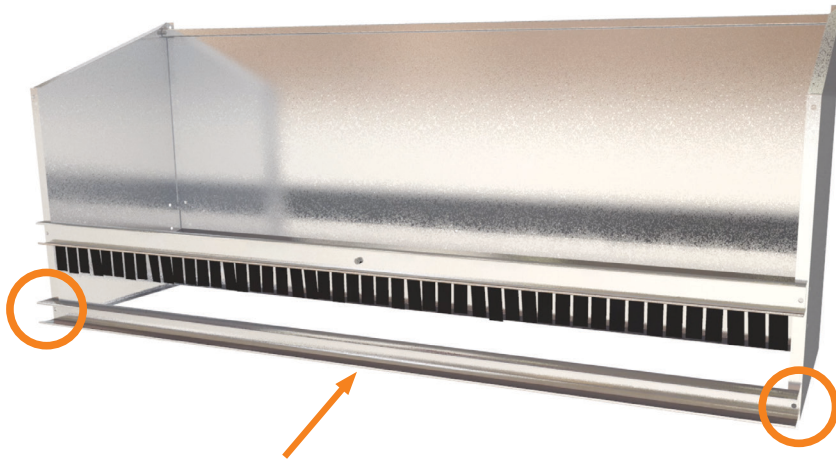
7



Swing the Lower Back Panel (10) down into position.

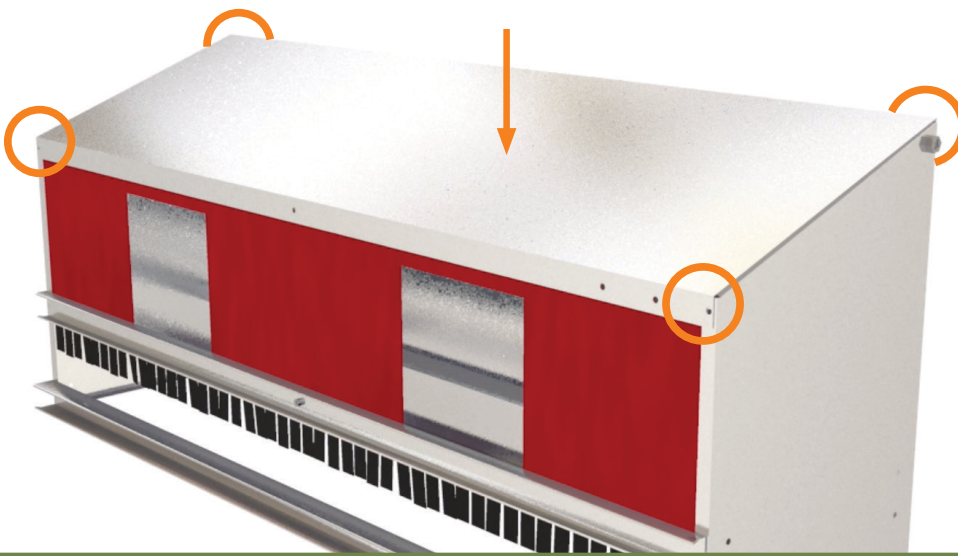
Attach the Upper C-Channel (13) to the front, outside holes of both Nest Sides (1&2) with two 3/16" bolts.

8



Attach the Lower C-Channel (11) to the front, bottom, outside holes of Nest Sides (1&2) with two 3/16" bolts.

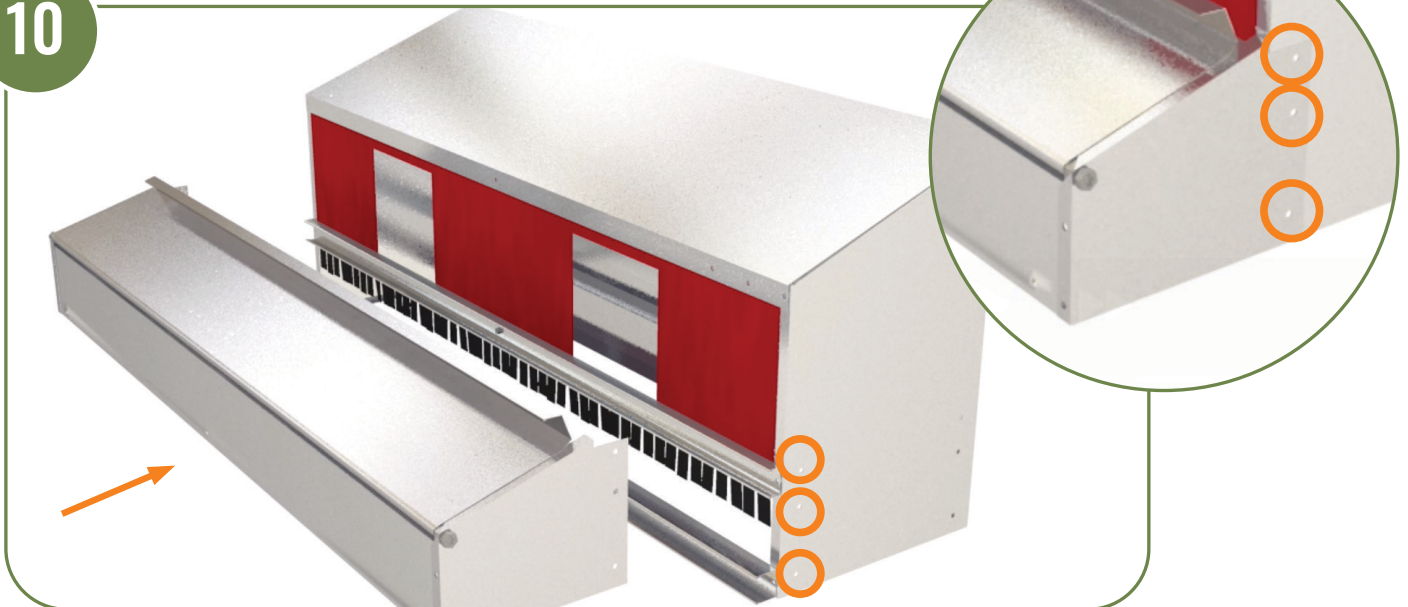
9



Attach the Roof (15) to the top holes of Nest Sides (1&2) with four 3/16" bolts.

# Front Rollout Nest Box Assembly Instructions

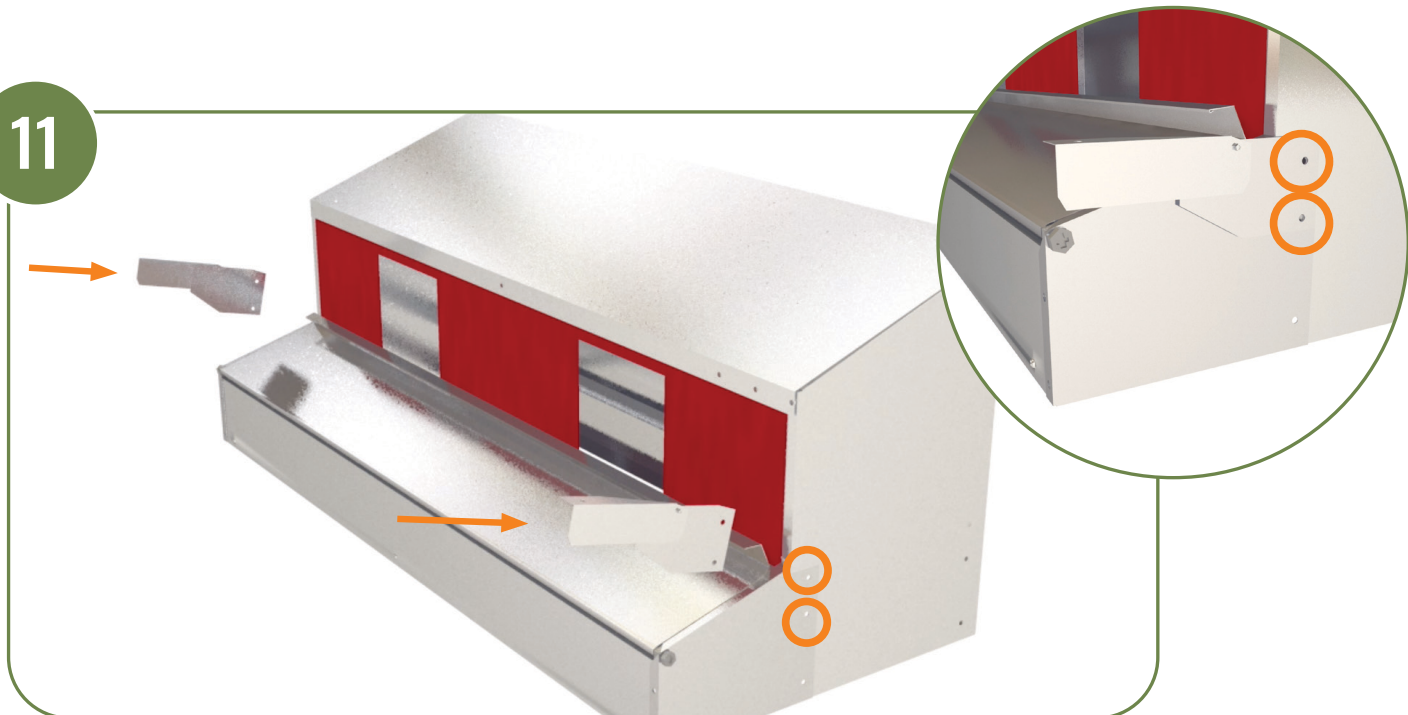
10



Align the assembled Collection Tray to the three holes on each of the Nest Sides (1&2).

**NOTE:** The bolts will be inserted after the Roost Brackets are also aligned with the top two holes in the next step.

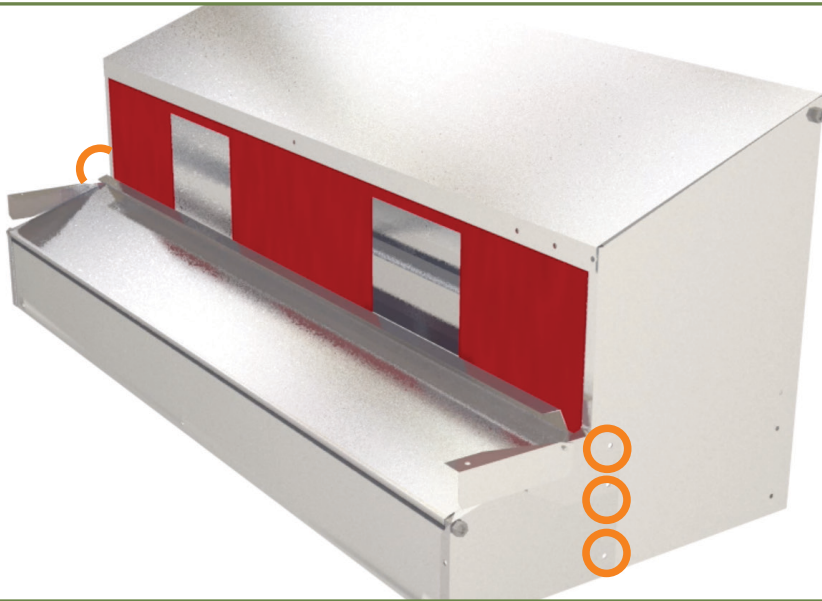
11



Align the Roost Brackets (5&6) with the top two outside holes of Nest Sides (1&2)

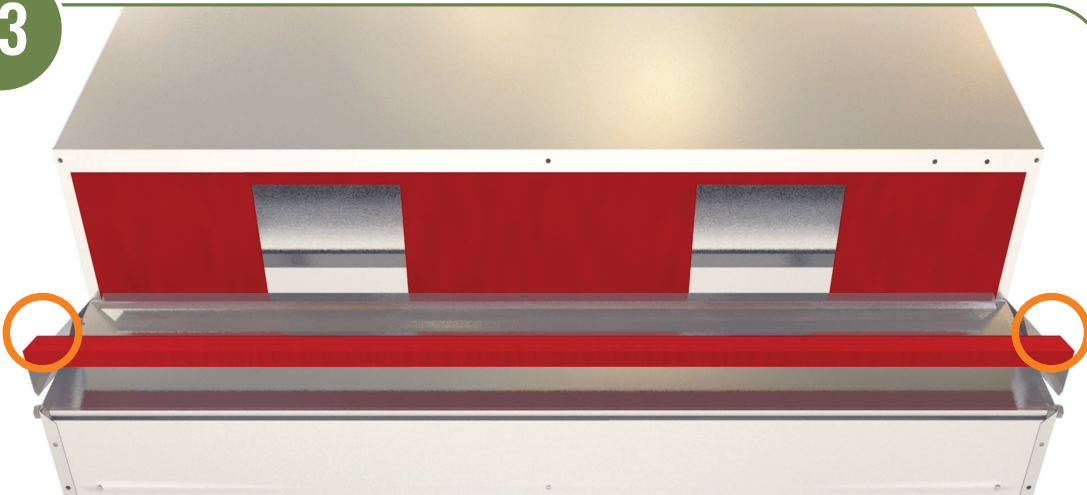


12



Secure the Roost Brackets (5&6) and assembled Collection Tray to both Nest Sides (1&2) with six 3/16" bolts.

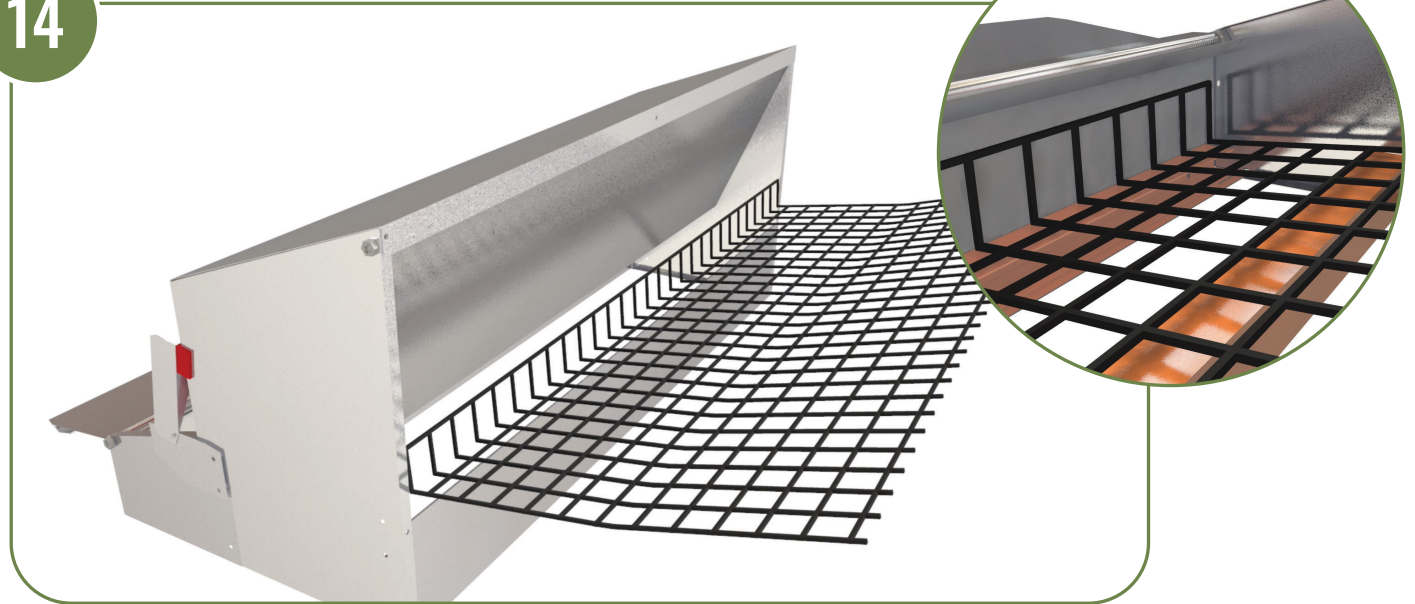
13



Secure the Roost Bar (14) to both Roost Brackets (5&6) with two 1/4" bolts using 7/16 wrench.

# Front Rollout Nest Box Assembly Instructions

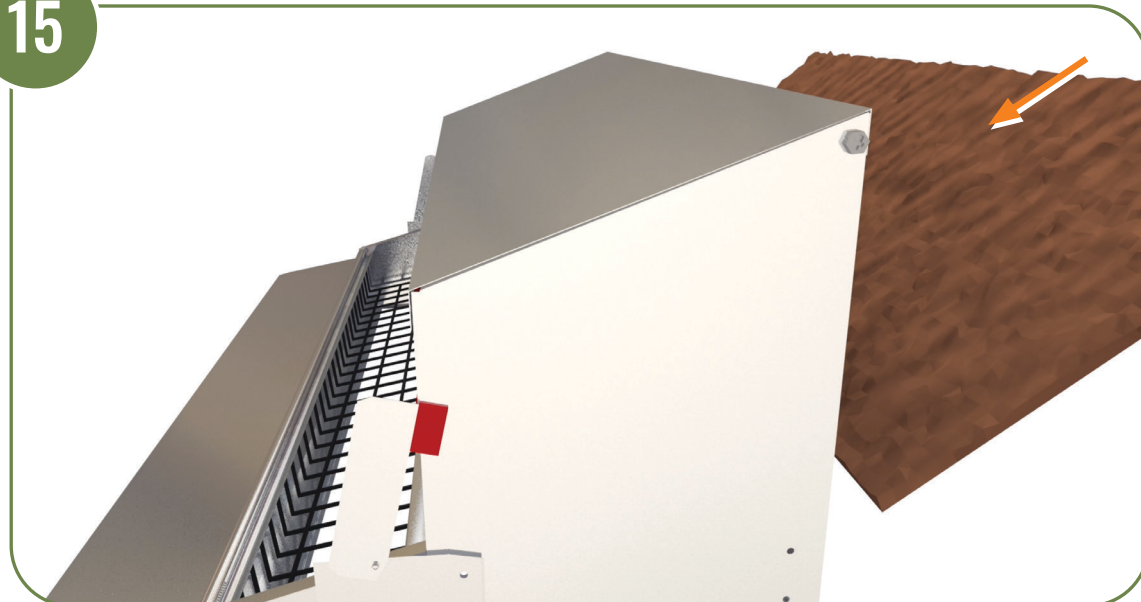
14



Insert Panel (9) through Hinged Back (18) and place in-between Lower C-Channel (11) and Upper C-Channel (13).

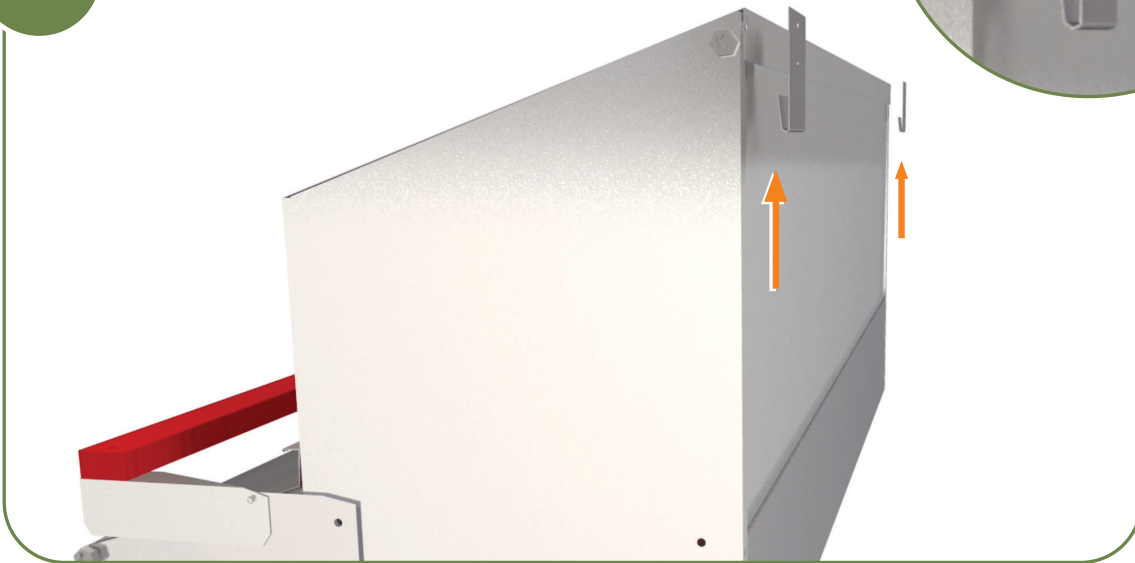
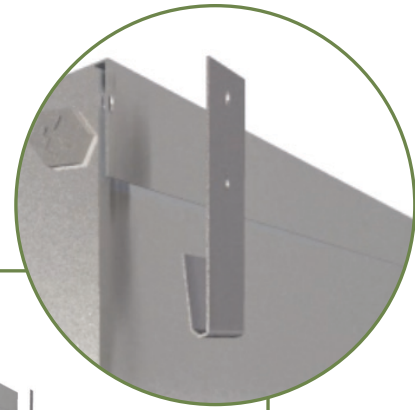
**NOTE:** Raising the Roost Bar and opening the top of the Collection Tray will allow for easier access and Panel insertion.

15



Insert Brown Pad (8) through Hinged Back (18) and lay on top of Panel (9).

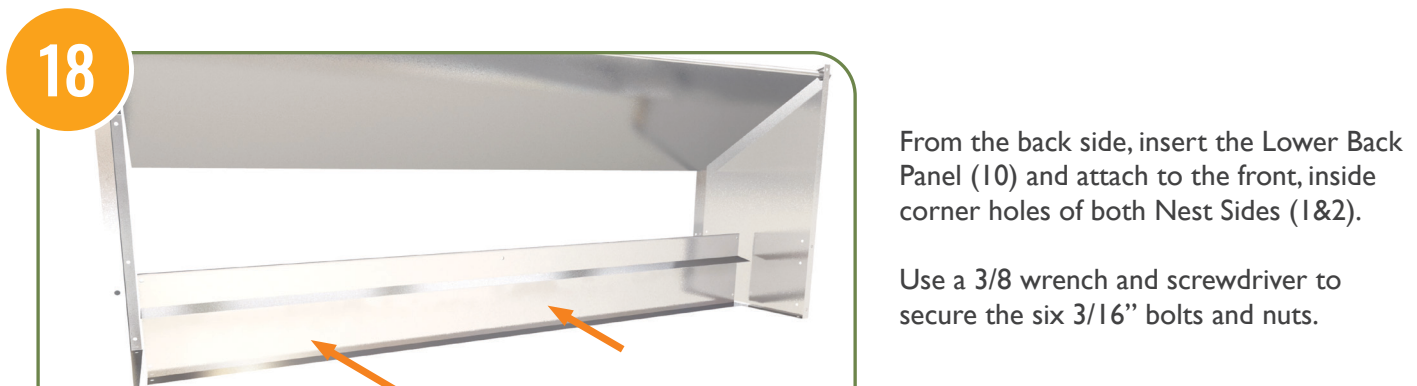
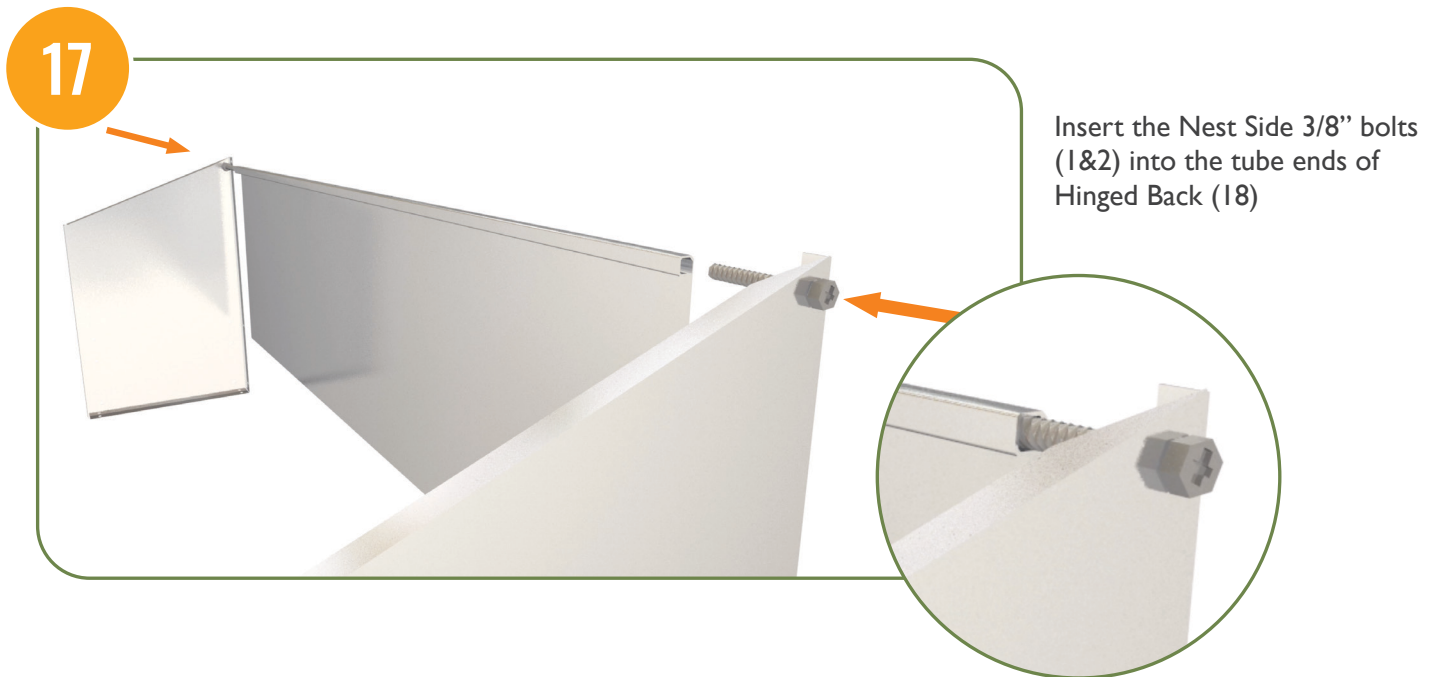
16



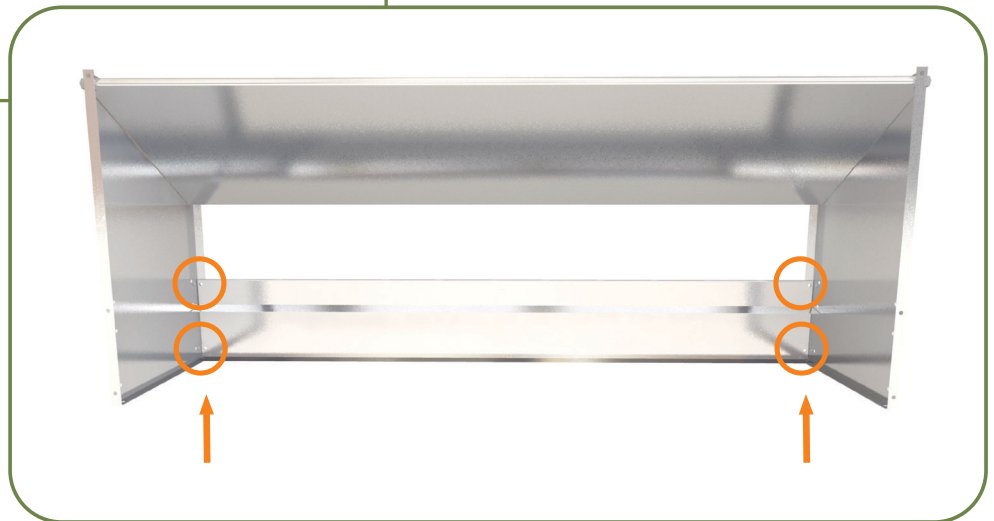
Secure both Hangers (19) to your coop wall with screws (not included) and hang assembled Nest box to Hangers (19).

Skip to page 18 (Steps 28 & 29) for **X-Large Nest Box** Reinforcements.

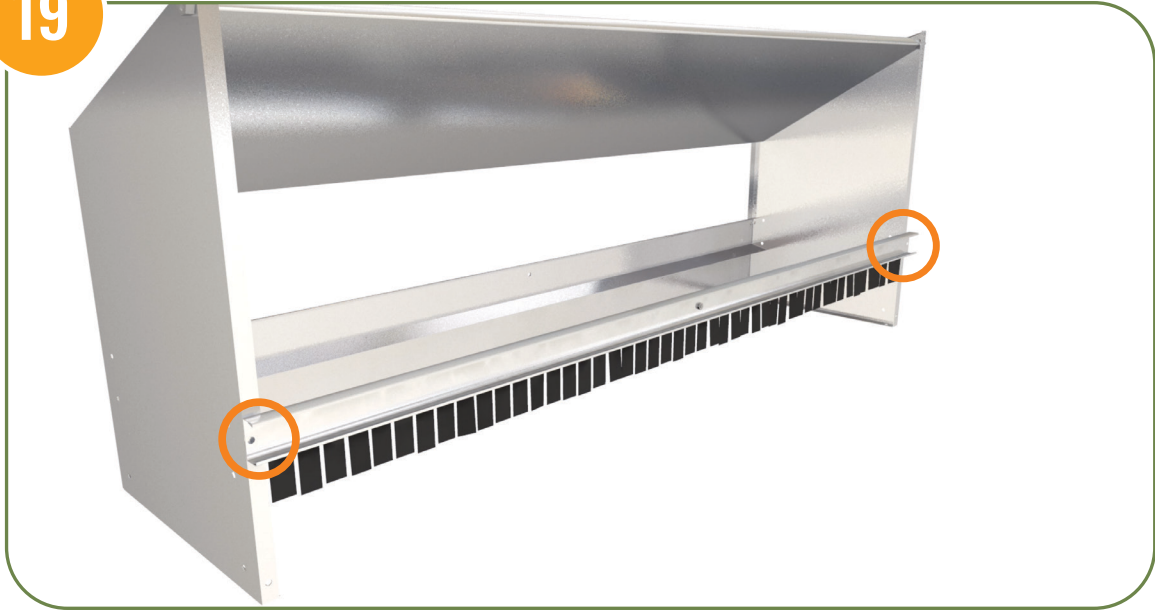
# Rear Rollout Nest Box Assembly Instructions



**NOTE:** When inserting the Lower Back Panel between the Nest Sides, push the Hinged Back Panel forward and slightly pull Nest Sides outward to allow for easier insertion of the Lower Back Panel.

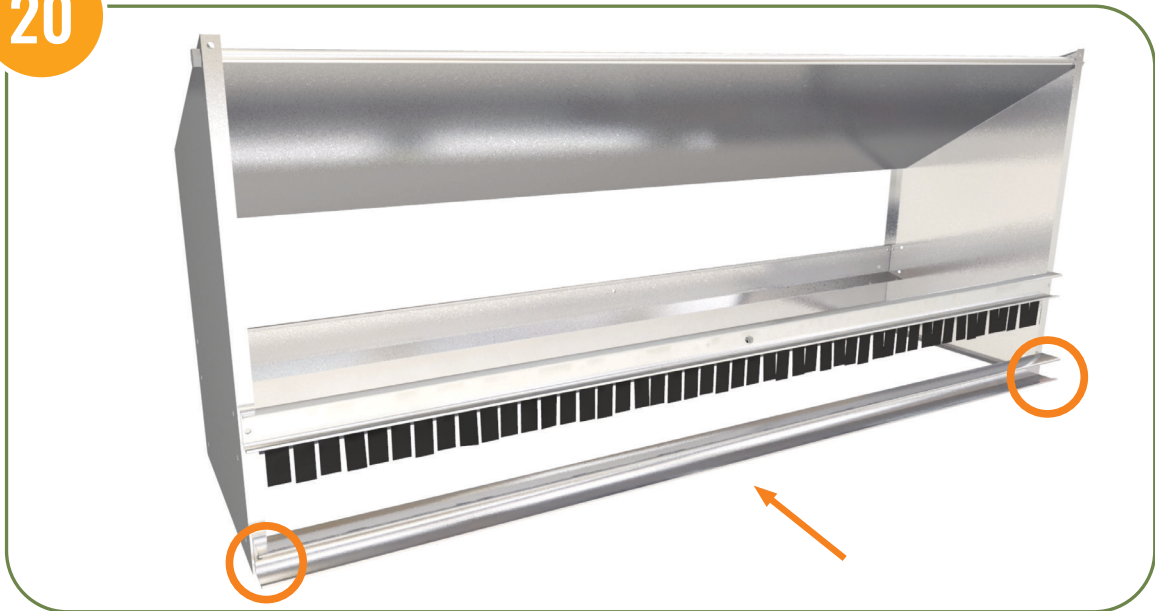


19



Attach the Upper C-Channel (13) to the back, outside holes of both Nest Sides (1&2) with two 3/16" bolts.

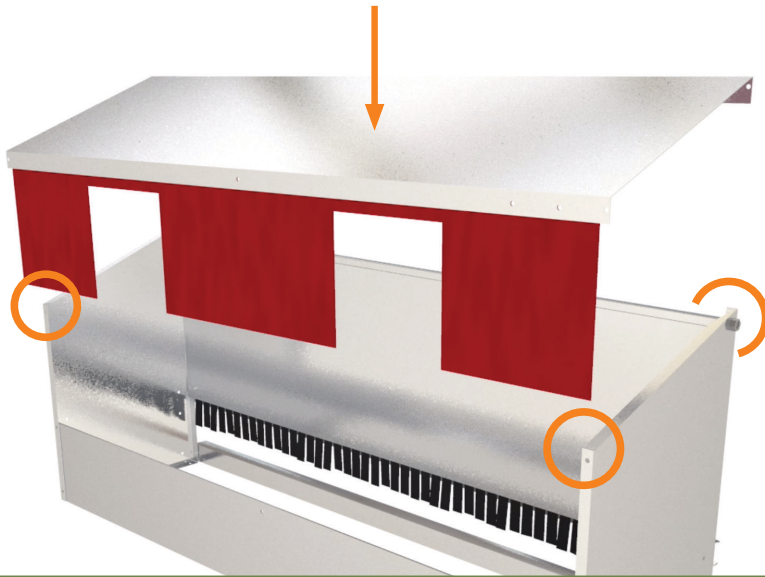
20



Attach the Lower C-Channel (11) to the front, bottom, outside holes of Nest Sides (Parts 1&2) with two 3/16" bolts.

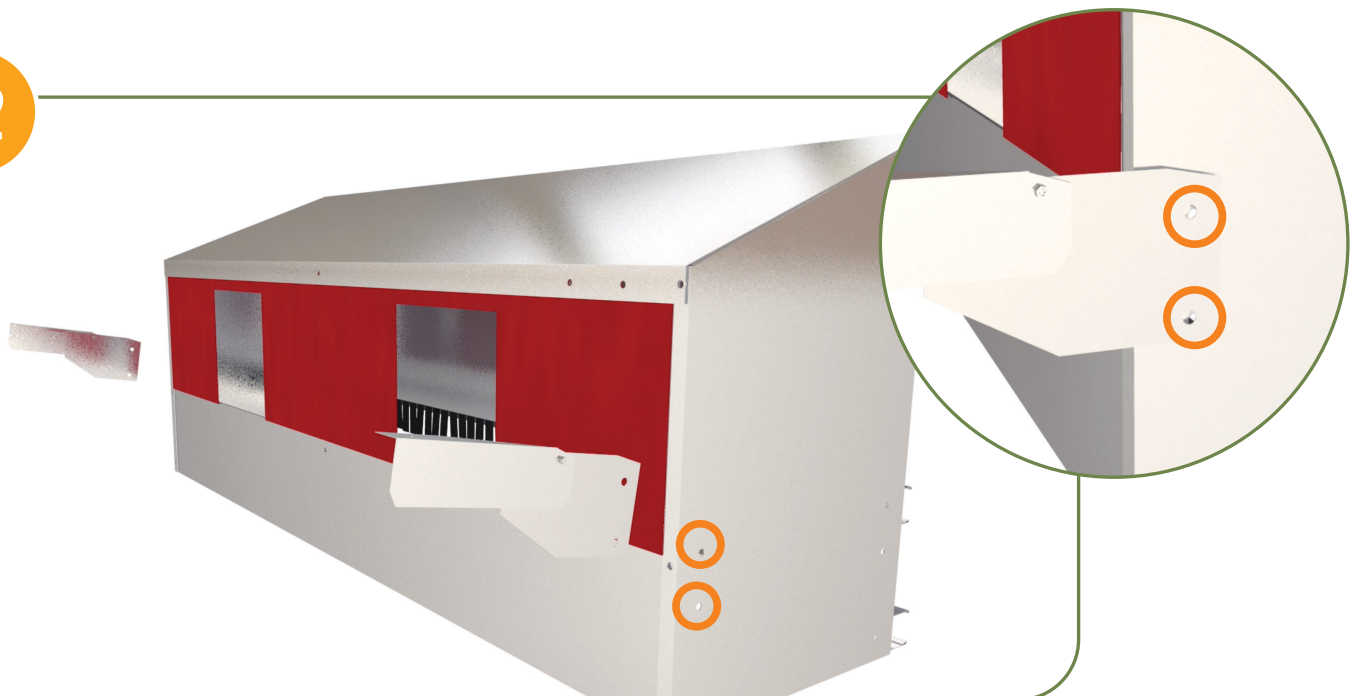
# Rear Rollout Nest Box Assembly Instructions

21



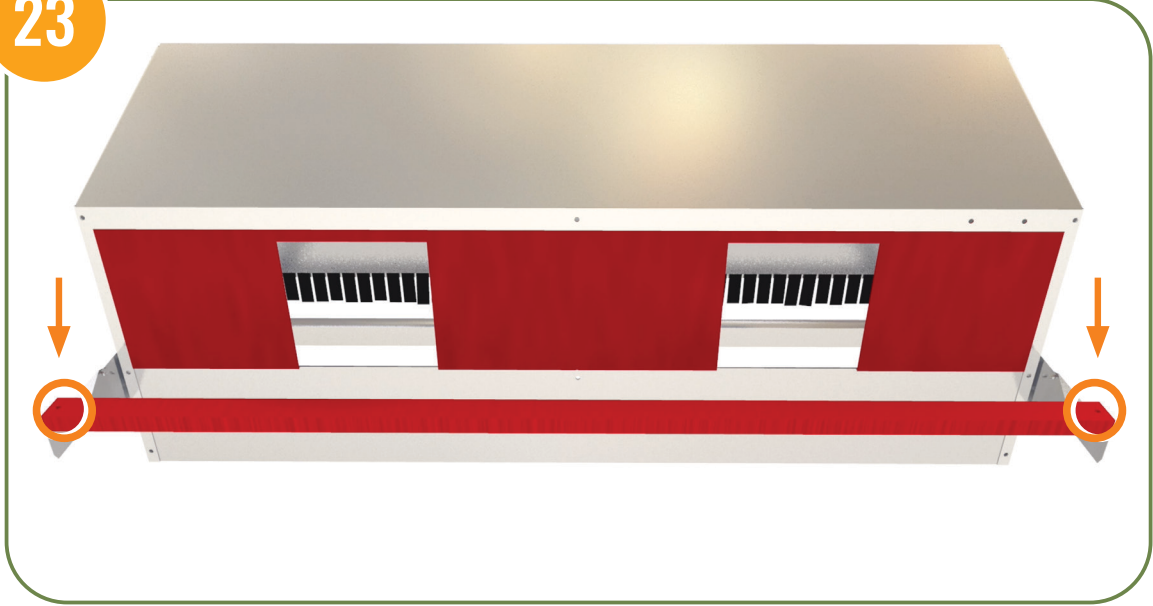
Attach the Roof (15) to the top holes of Nest Sides (1&2) with four 3/16" bolts.

22



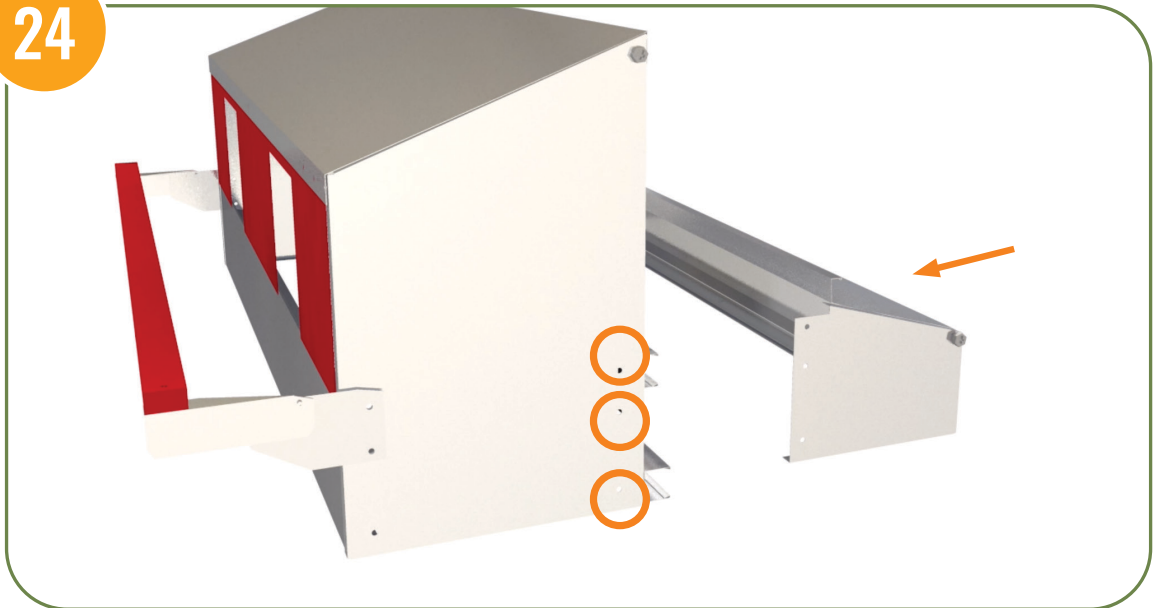
Secure Roost Brackets (5&6) to Nest Sides (1&2) front, top two holes with 3/16" bolts.

23



Secure Roost Bar (14) to both Roost Brackets (5&6) with 1/4" bolts.

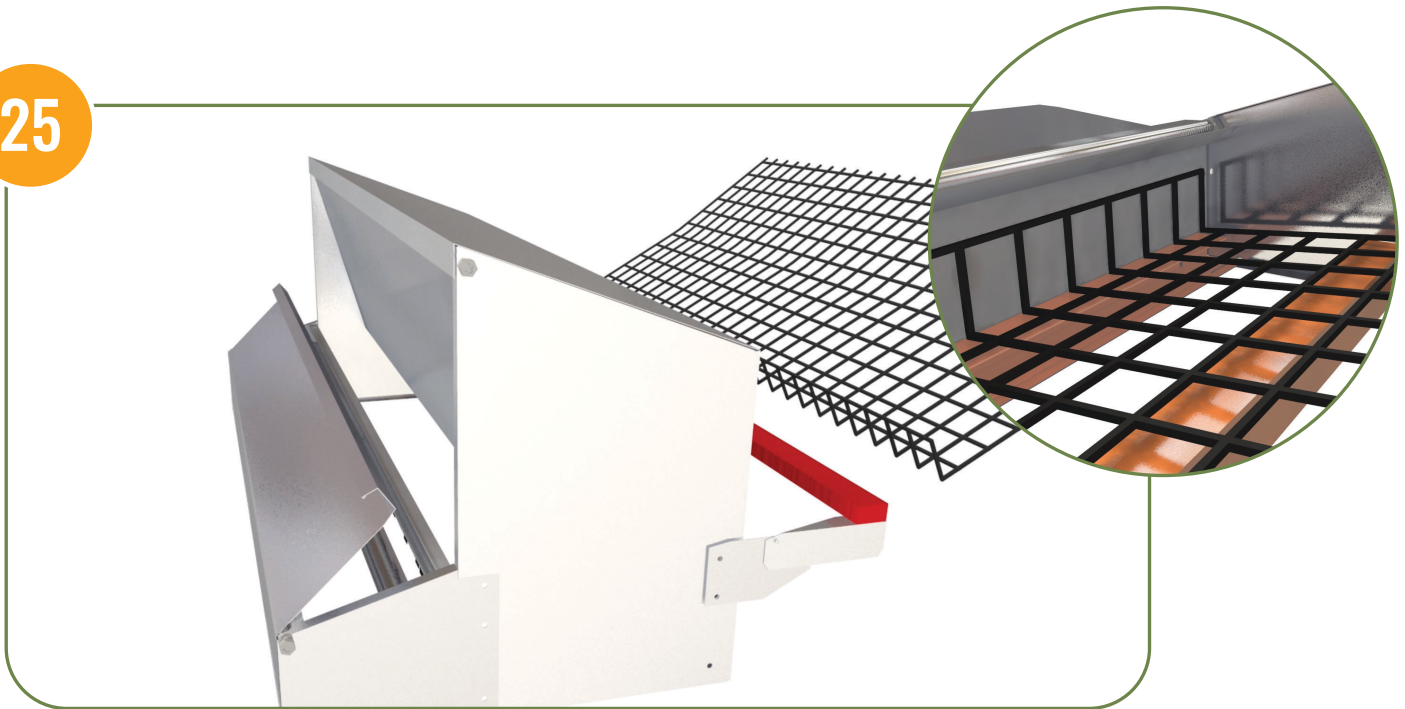
24



Align and secure the assembled Collection Tray to the three holes on each of the Nest Sides (1&2).

# Rear Rollout Nest Box Assembly Instructions

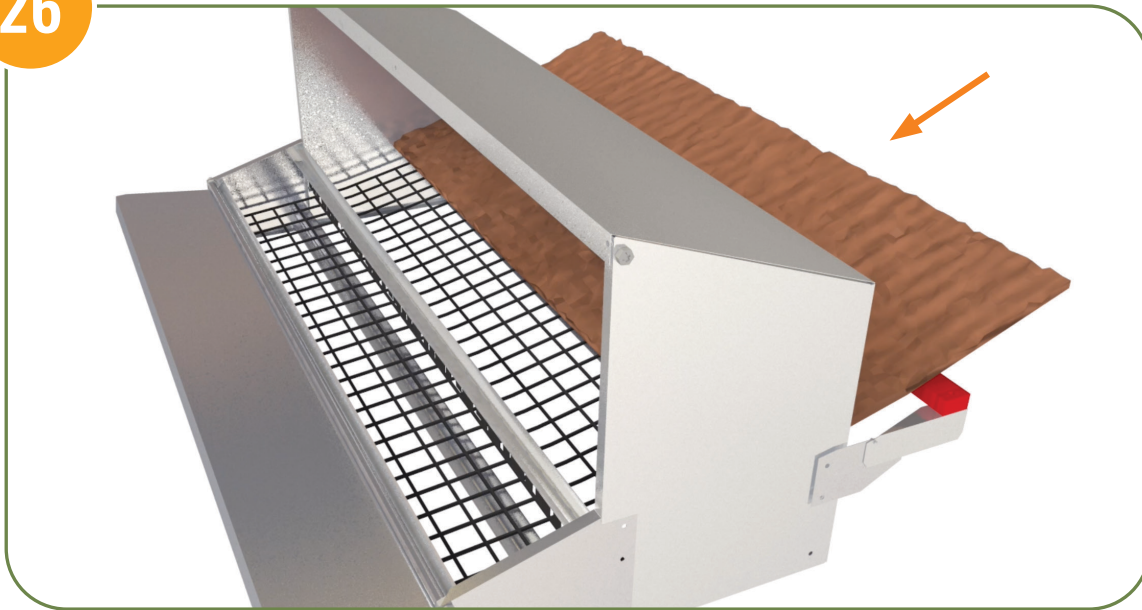
25



Insert Panel (9) through Hinged Back (18) and place in-between Lower C-Channel (11) and Upper C-Channel (13).

**NOTE:** Raising the top of the Collection Tray will allow for easier access and Panel insertion.

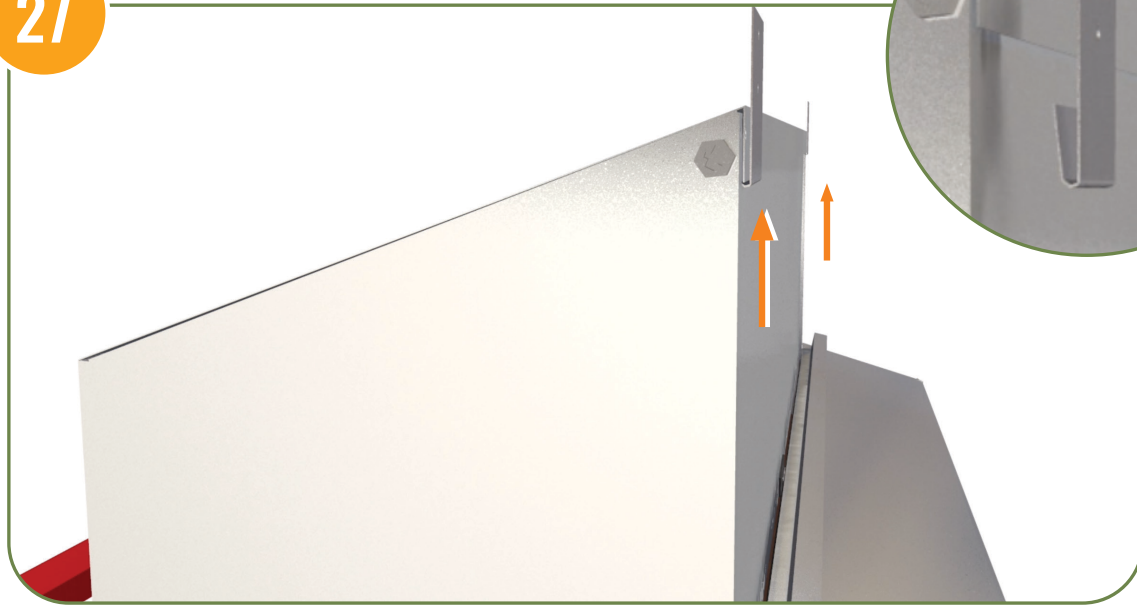
26



Insert Brown Pad (8) and lay on top of Panel (9).



27



Secure both Hangers (19) to your coop wall with screws (not included) and hang assembled Nest box to Hangers (19).

# Large & X-Large Nest Box Reinforcement

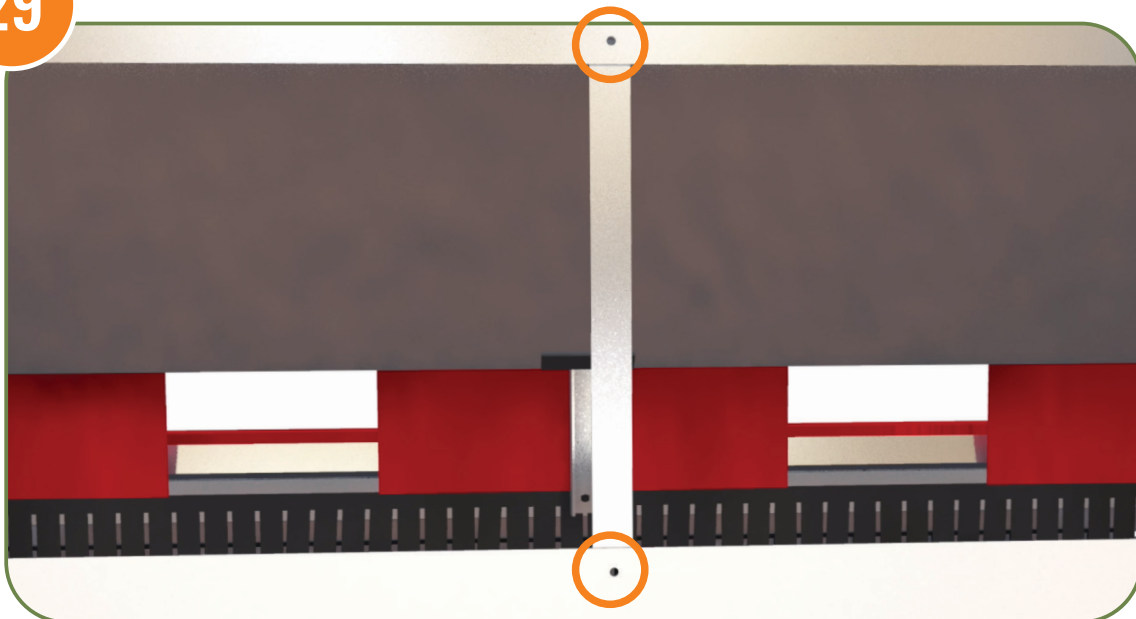
---

28



Attach Small Spacer (16) to middle hole on Roof (15) and middle hole of Upper C-Channel (Part 13) towards the inside, front of the Nest Box.

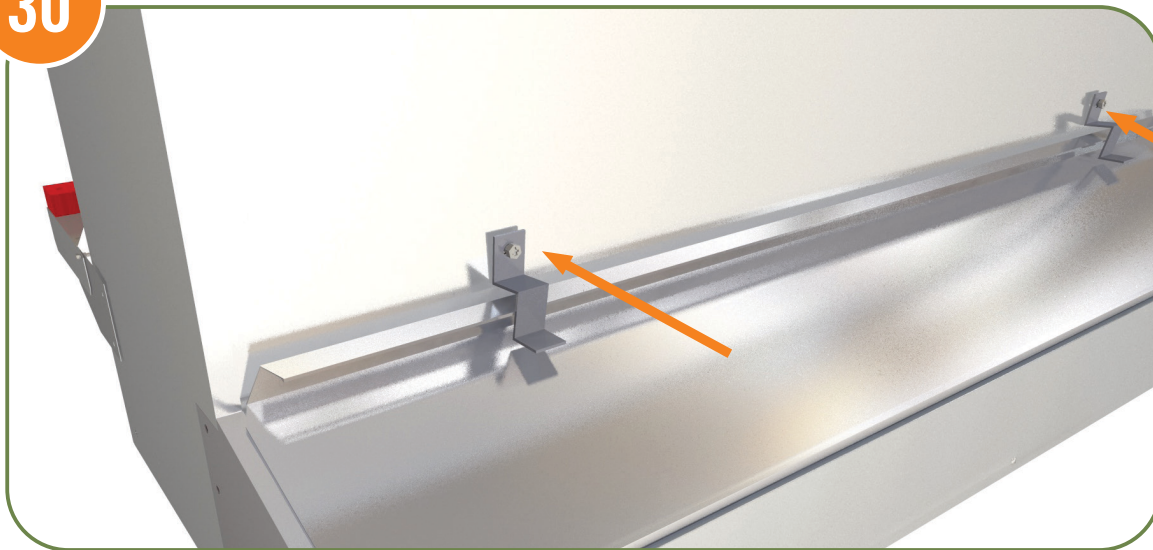
29



Attach Large Spacer (17) to the middle hole of Roof (15) and to middle hole of Lower Back (10) towards the inside, rear of the Nest Box.

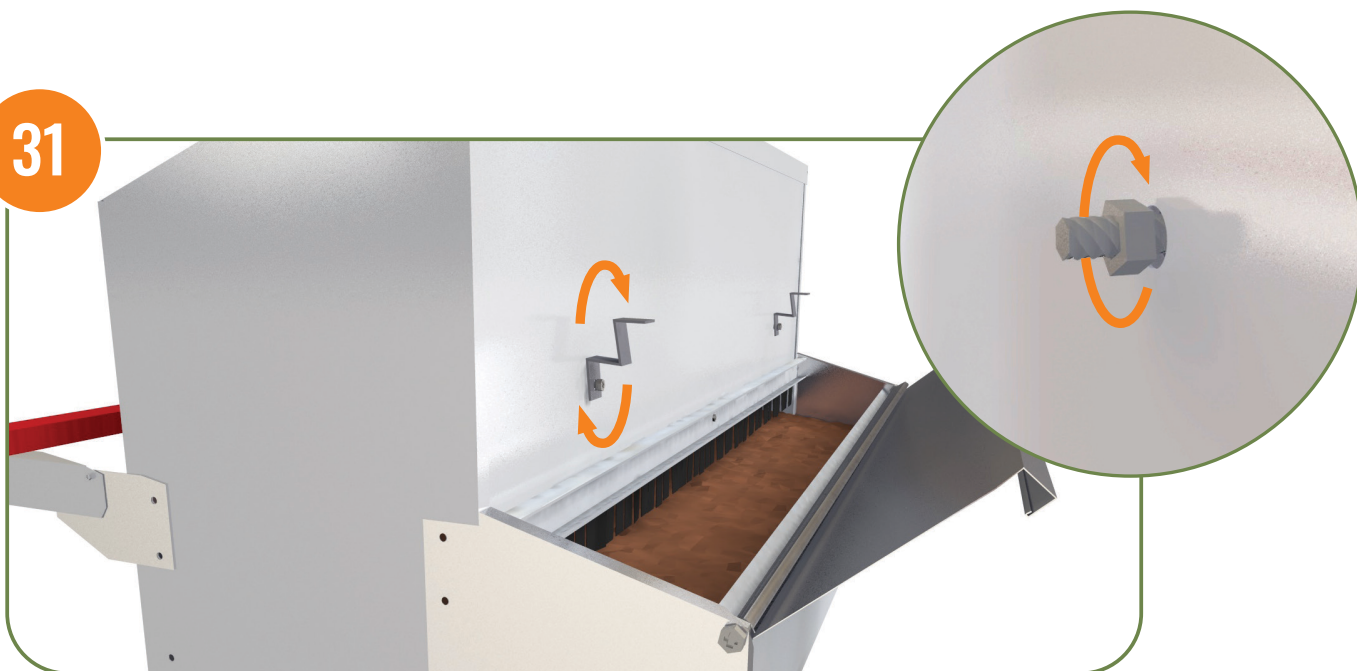
# Predator Locks Assembly Rear Rollout Only

30



Secure Predator Locks (20) to back holes (18) using 3/16" bolt & lock-nut.

31



Tighten lock-nut from inside the box to desired tension with screw-driver & 3/8" wrench  
**(Predator Lock should be loose enough to rotate upward).**

# Frequently Asked Questions

---

## **How do I get my chickens to lay in the Nest Box?**

Usually chickens will have no issues figuring out how to use the nest box. However, you can try these 4 temporary tricks if your hens are having trouble.

1. Lower the nest box to a couple inches off the ground.
2. Put a little bit of straw and/or wood shavings on top of the nest pad.
3. Tape open/up the red curtains.
4. Place a fake egg inside the nest box.

Combining all 4 of these tips for 2 weeks will usually resolve the issue. Take an additional week to slowly remove the straw, remove the tape and raise the nest box off the ground.

## **How high should I mount my Nest Box off of the ground?**

We recommend mounting your nest box roughly 2.5 feet off your coop floor for easy access for your hens.

## **Can I double stack my Nest Boxes? Mounting one on top of the other?**

Yes, you absolutely can! Many of our customers do this in their coops to maximize their space.

## **How often should I clean my Nest Pad?**

Making sure your hens are not sleeping in the nest box overnight by raising the red roost bar after egg collecting is a good way to keep the nest pad cleaner. By doing this, you should only need to clean your nest pad about every 2 months.

## **How do I clean my Nest Pad?**

Clean your nest pad by soaking pad in a small tub of hot water with soap for one hour. Remove and water-spray clean before returning to nest box.



# HEN GEAR