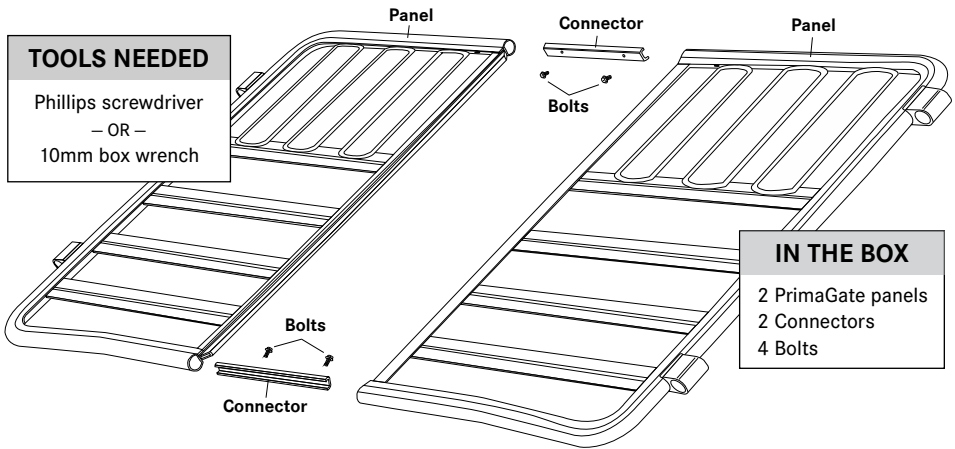
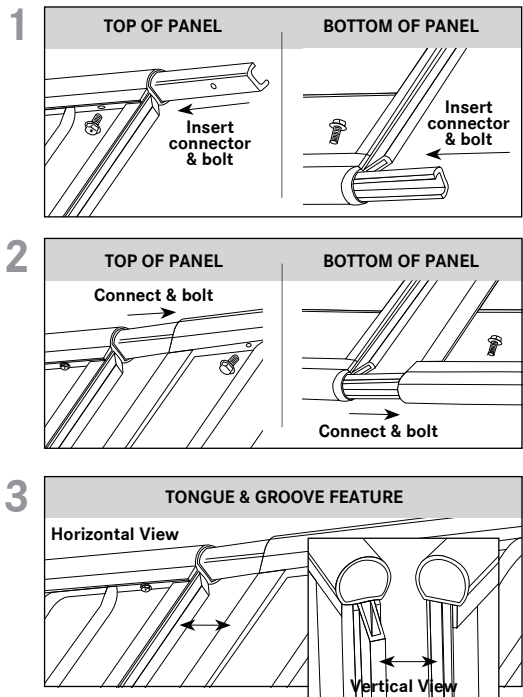


# PrimaGate™ 2



## How to assemble

- 1. Remove black end caps.** (A hammer/mallet and blunt chisel/screwdriver may be required to drive them out.) **Place panels welded side up. Insert connectors in one of the panels.** The bolt holes in the connector are offset, so make sure the holes are up when inserting. Partially thread the bolt into the connector through the slotted hole in the panel. Repeat this on the other end of panel.
- 2. Insert the attached connectors into the remaining half of the gate,** making sure that it is oriented properly.
- 3. Squeeze the two panels together.** Note: The two panels have a tongue and groove feature and they must interconnect. **Thread and tighten all bolts.**



premier1supplies.com  
800-282-6631