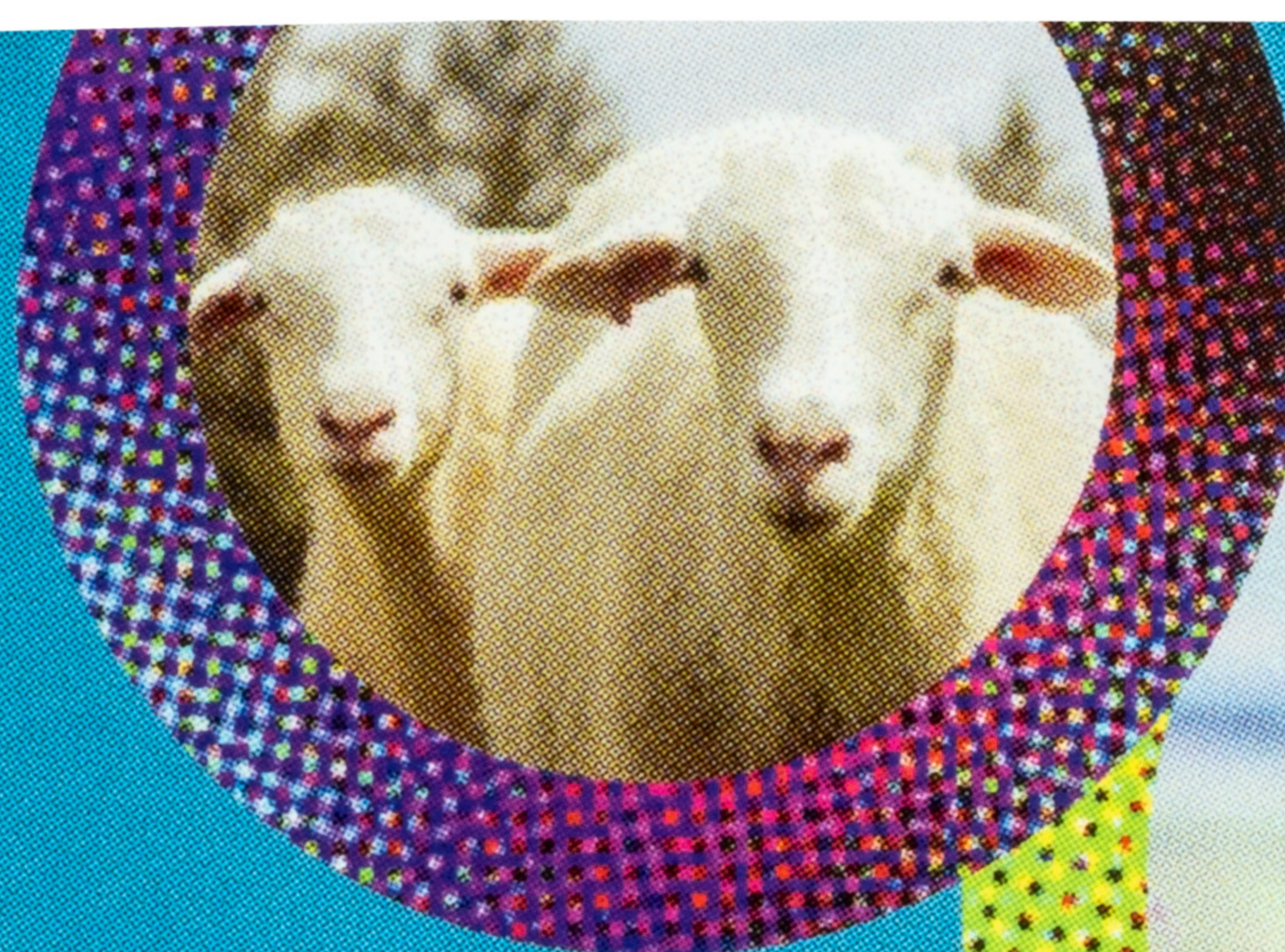


ULTRA BOSS[®]

Pour-On Insecticide

For Cattle, Sheep, Goats and Horses



Take Control of Flies and Lice

Season-Long Lice Control[†] with One Application

ACTIVE INGREDIENTS:

Permethrin: 3-(phenoxyphenyl)methyl (±)-cis, trans-3-(2,2-dichloroethenyl)-2,2-dimethylcyclopropanecarboxylate*: ... 5.0%
Piperonyl Butoxide**: 5.0%

INERT INGREDIENTS***:

90.0%

TOTAL:

100.0%

* cis/trans ratio Min 35% (±) cis and Max 65% (±) trans

** (butylcarbityl)(6-propylpiperonyl) ether and related compounds

*** contains petroleum distillates

†Season long lice from January - April



May be used
with Automatic
Dosing System



Squeez 'N'
Measure[™]
Bottle

TREATS
57
550 lb Cattle

KEEP OUT OF REACH OF CHILDREN
CAUTION
See Back Panel for Additional
Precautionary Statements



EPA Reg. No. 773-84
EPA Est. No. 618-BRA-1
Intervet Inc (d/b/a Merck Animal Health)
2 Giralda Farms, Madison, NJ 07940
Rev. 07/22 2011396-01-07 22

Net Contents:
One U.S. Quart (0.946L)

ULTRA BOSS®

Pour-On Insecticide For Cattle, Sheep, Goats and Horses

FIRST AID	
IF ON SKIN OR CLOTHING	Take off contaminated clothing. Rinse skin immediately with plenty of water for 15-20 minutes. Call a poison control center or doctor for treatment advice.
IF SWALLOWED	Immediately call a poison control center or doctor. Do not induce vomiting unless told to by a poison control center or doctor. Do not give any liquid to the person. Do not give anything by mouth to an unconscious person.
HOTLINE NUMBER	
Have the product container or label with you when calling a poison control center or doctor, or going for treatment. For non-emergency information on this product, call 1-800-211-3573, Monday through Friday, 7 a.m. to 5 p.m. CST. For medical emergencies, call the poison control center at 1-800-222-1222.	
Note to Physician: Contains petroleum distillates. Vomiting may cause aspiration pneumonia.	



PRECAUTIONARY STATEMENTS

Hazards to Humans and Domestic Animals: CAUTION: Harmful if absorbed through skin. Avoid contact with skin, eyes, or clothing. Wear Long-sleeved shirt, long pants, shoes, socks, and chemical resistant gloves (Barrier laminate, Nitrile rubber, Neoprene rubber, Viton, selection category E). Prolonged or frequently repeated skin contact may cause allergic reaction in some individuals.

PERSONAL PROTECTIVE EQUIPMENT (PPE)

All handlers must wear: Long-sleeve shirt, long pants, shoes plus socks, and chemical resistant gloves (barrier laminate, nitrile rubber, neoprene rubber, Viton, selection category E).

USER SAFETY REQUIREMENTS

Follow manufacturer's instructions for cleaning/maintaining PPE. If no such instructions for washables exist, use detergent and hot water. Keep and wash PPE separately from other laundry. Discard clothing and other absorbent materials that have been drenched or heavily contaminated with this product's concentrate. Do not reuse them.

USER SAFETY RECOMMENDATIONS

User should wash hands before eating, drinking, chewing gum, using tobacco, or using the toilet. Users should remove clothing/PPE immediately if pesticide gets inside. Then wash thoroughly and put on clean clothing. User should remove PPE immediately after handling this product. Wash the outside of gloves before removing. As soon as possible, wash thoroughly and change into clean clothing.

LOT
002/24

2011397-01-07 22


CONTAINS
LEAFLET
FULL

ENVIRONMENTAL HAZARDS

This pesticide is extremely toxic to aquatic organisms, including fish and invertebrates. To protect the environment do not allow pesticide to enter or run off into storm drains, drainage ditches, gutters, or surface waters. Applying this product in calm weather when rain is not predicted for the next 24 hours will help to ensure that wind or rain does not blow or wash pesticide off the treatment area.

This pesticide is highly toxic to bees exposed to direct treatment on blooming crops or weeds. Do not apply this product or allow it to drift to blooming crops or weeds while bees are actively visiting the treatment area.

DIRECTIONS FOR USE

It is a violation of Federal law to use this product in a manner inconsistent with its labeling.

READY TO USE - No dilution necessary.

USE RESTRICTIONS

Only protected handlers may be in the area during applications.
Not for use in outdoor residential misting systems.

Apply To	Target Species	Dosage
Lactating and Non-Lactating Dairy Cattle, Beef Cattle, Calves, Horses (Not intended for human consumption)	Lice, Horn flies, face flies. Aids in control of Horse flies, Stable flies, Mosquitoes, Black flies, and Ticks	Apply 3 mL per 100 lbs body weight of animal up to a maximum of 30 mL for any one animal. Pour along back and down face. Back Rubber Use: Mix 100 mL per gallon of #2 diesel oil or mineral oil. Keep rubbing device charged. Results improved by forced daily use.
Lactating and Non - Lactating Dairy Goats		Apply 1.5 mL per 50 lbs body weight of animal up to a maximum of 18 mL for any one animal. Pour along back and down face.
Sheep	Sheep keds, Lice	Pour along back. Apply 1.5 mL per 50 lbs of body weight of animal up to a maximum of 18 mL for any one animal.

For cattle, horses, sheep, and goats, repeat treatment as needed but not more than once every two weeks. For horses, do not saddle horse for 6 hours after application and refrain from washing down area of application.

For optimum lice control, two treatments at 14-day intervals are recommended.

Special Note: Ultra Boss® Pour-On Insecticide is not effective against cattle grubs.



STORAGE AND DISPOSAL

Do not contaminate water, food, or feed by storage or disposal.

STORAGE: Keep container sealed when not in use. Do not store near food or feed.

PESTICIDE DISPOSAL: Wastes resulting from the use of this product may be disposed of on site or at an approved waste disposal facility.

CONTAINER HANDLING: Nonrefillable container. Do not reuse or refill this container. Triple rinse (or equivalent). Then offer for recycling or reconditioning, or puncture and dispose of in a sanitary landfill, or by incineration, or if allowed by State and local authorities, by burning. If burned, stay out of amoke.

NOTICE OF WARRANTY

To the extent consistent with applicable law, Intervet, Inc./Merck Animal Health makes no warranty of merchantability, fitness for any particular purpose or otherwise expressed or implied, concerning this product or its uses which extend beyond the use of the product under normal conditions in accordance with the statements on this label.

Copyright © 1999-2022 Merck & Co., Inc., Rahway, NJ,
USA and its affiliates. All rights reserved.

Rev. 07/22